

Norwich Road, built to a high specification by local builder, Wymondham, Norfolk

Offers In Region Of £525,000

4 2 3



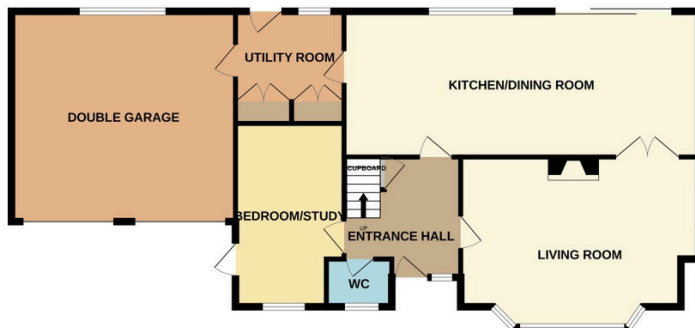
This exceptional detached three/four-bedroom home was built to an outstanding specification by a highly regarded local builder as his own residence, with quality craftsmanship and attention to detail throughout. Approximately 2,000 sq ft of spacious and versatile accommodation, with three generous double bedrooms, including a superb principal bedroom with en-suite. In addition, there is a study/entertainment room which offers flexibility and could easily serve as a fourth bedroom. The home also presents exciting potential for further enhancement.

Tenure: Freehold EPC: D Council Tax: E

Key Features

- Exceptional detached three/four-bedroom home was built to an outstanding specification by a highly regarded local builder
- Approximately 2,000 sq ft of spacious and versatile accommodation, the property features three generous double bedrooms
- The owners have removed the wall between the kitchen/breakfast room and dining room to create a stunning 28ft open-plan Kitchen
- Further potential exists for annexe conversion by incorporating the study, utility room, and double garage subject to planning
- A fantastic opportunity to acquire a high-quality family home in a prime location.
- Ideally located just minutes from the highly sought-after Wymondham High School, the leisure centre
- There is a study/entertainment room which offers flexibility and could easily serve as a fourth bedroom
- The property has new bathrooms and been updated throughout also to a high specification by the current owners
- This property offers an excellent option for multi-generational living or additional guest accommodation
- See our full online listing for further details including flood risk, broadband speed and other material information

GROUND FLOOR
1128 sq.ft. (104.8 sq.m.) approx.



1ST FLOOR
626 sq.ft. (58.1 sq.m.) approx.



TOTAL FLOOR AREA: 1754 sq.ft. (162.9 sq.m.) approx.

Whilst every attempt has been made to ensure the accuracy of the floorplan contained here, measurements of doors, windows, rooms and any other items are approximate and no responsibility is taken for any error, omission or mis-statement. This plan is for illustrative purposes only and should be used as such by any prospective purchaser. The services, systems and appliances shown have not been tested and no guarantee as to their operability or efficiency can be given.
Made with Metropix ©2026