



Woodland Park

Oulton, Leeds, LS26 8LF
Offers In The Region Of £750,000



SIGNATURE

BY

Emsleys | estate agents

Woodland Park

Oulton, Leeds, LS26 8LF

LARGE FAMILY HOME. SOUGHT AFTER LOCATION. TASTEFULLY UPDATED. TUCKED AWAY POSITION.

Tucked away off the desirable Woodland Park cul de sac in Oulton, Leeds, is this substantial and charming detached house which presents a rare opportunity for those seeking a spacious family home in this desirable location. The property has been thoughtfully updated, featuring a modern fitted kitchen and two stylish bathrooms that cater to contemporary living.

With four well-proportioned bedrooms with ample fitted furniture to three rooms, this home offers ample space for families of all sizes. The three reception rooms provide versatile living areas, perfect for entertaining guests or enjoying quiet family time. The large utility room adds practicality, making household chores more manageable.

Externally, the property benefits from off-street parking for two vehicles, a garage currently used as a workshop, showcasing its potential for a variety of uses, and a low maintenance pretty garden ideal for outdoor living.

Set in a sought after residential area this home is surrounded by a friendly community and is close to local amenities, schools and parks, making it an ideal location for families. This delightful home combines comfort, style and functionality, making it a must-see for anyone looking to settle in a vibrant and welcoming neighbourhood. Don't miss out on this exceptional opportunity to make Woodland Park your new home. Call now to arrange your viewing.

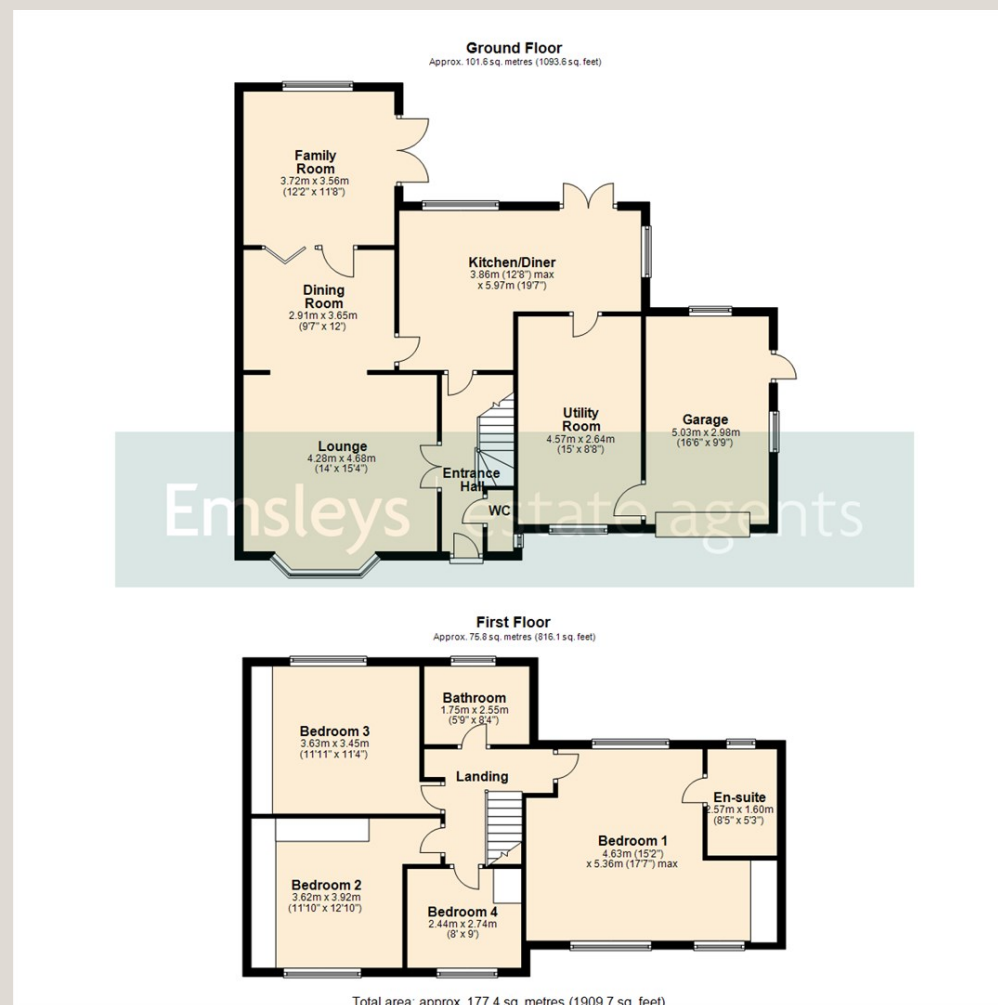
- TUCKED AWAY POSITION
- SOUGHT AFTER LOCATION
- RECENTLY UPDATED KITCHEN & BATHROOMS
- THREE RECEPTION ROOMS
- UTILITY ROOM & DOWNSTAIRS WC
- LARGE MASTER BEDROOM WITH EN-SUITE
- DOUBLE DRIVE & SINGLE GARAGE
- RARE OPPORTUNITY
- Council Tax Band E
- EPC Rating D











6 Main Street, Garforth
Leeds LS25 1EZ

t. 0113 286 4000

e. garforth@emsleysestateagents.co.uk

www.emsleysestateagents.co.uk

35 Austhorpe Road, Crossgates
Leeds LS15 8BA

t. 0113 284 0120

e. crossgates@emsleysestateagents.co.uk

4 Wolsey Parade,
Sherburn in Elmet LS25 6BQ

t. 01977 680 088

e. sherburn@emsleysestateagents.co.uk

65 Commercial Street, Rothwell
Leeds LS26 0QD

t. 0113 201 4040

e. rothwell@emsleysestateagents.co.uk

These details are for guidance only and complete accuracy cannot be guaranteed. If there is any point, which is of particular importance, verification should be obtained. They do not constitute a contract or part of a contract. All measurements are approximate. No guarantee can be given with regard to planning permissions or fitness for purpose. No apparatus, equipment, fixture or fitting has been tested. Items shown in photographs are NOT necessarily included. Interested Parties are advised to check availability and make an appointment to view before travelling to see a property.



SIGNATURE

BY

Emsleys | estate agents