



Bell Lane, E1

£450,000

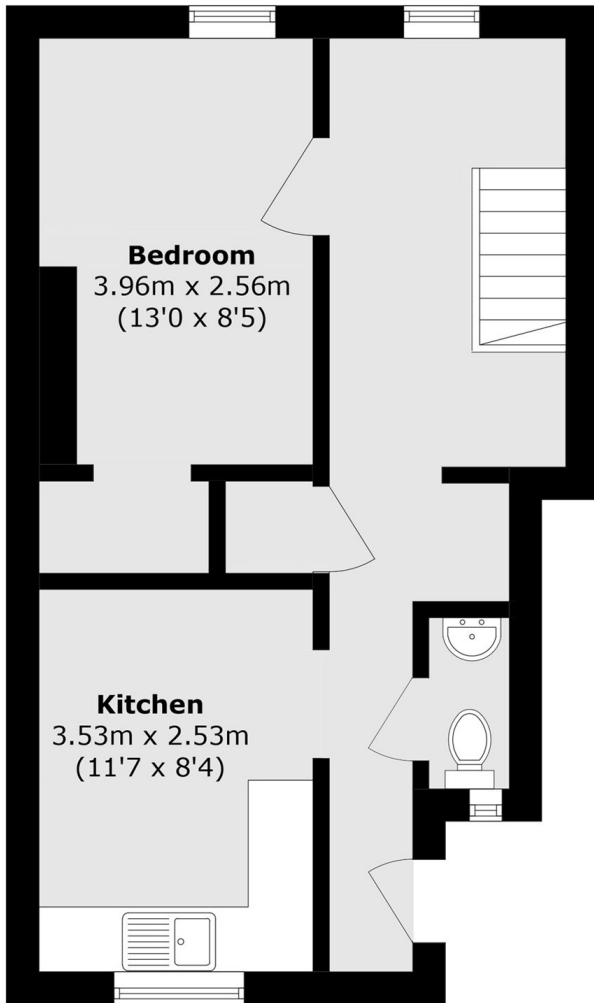
A bright two bedroom apartment located on the top floor of Brune House. The apartment is arranged over two floors and is currently set up as a three bedroom. The apartment comprises two double bedrooms, a living room/third bedroom, a separate kitchen and a bathroom.

Brune House is located within close proximity to Aldgate East, Liverpool Street, and Shoreditch High Street Station. Residents benefit from the local market and eateries at Spitalfields Market and Brick Lane. Offered chain free.

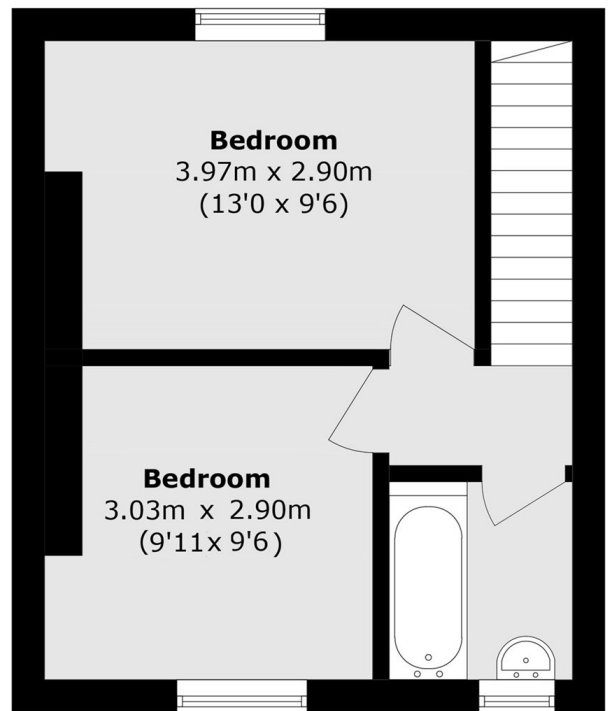
Features

- Split Level Apartment
- Excellent Transport Links
- Central Location
- Chain Free
- Top Floor
- Gated

Bell Lane,
London, E1



Second Floor



Third Floor

Total area (approx.): 66.6 sq. m (716.8 sq. ft)