

house¹⁵⁰⁰

Plot 16

**24 Keepers Quay
Manchester
M4 6JL**

houseTM

**New Islington
Manchester**

Plot 16

Postal address
**24 Keepers Quay
Manchester
M4 6JL**



Scale 1:1500



G8

The space

- x4 partitioned spaces, with doors
- Under stair storage
- Washing machine cupboard

Bathroom

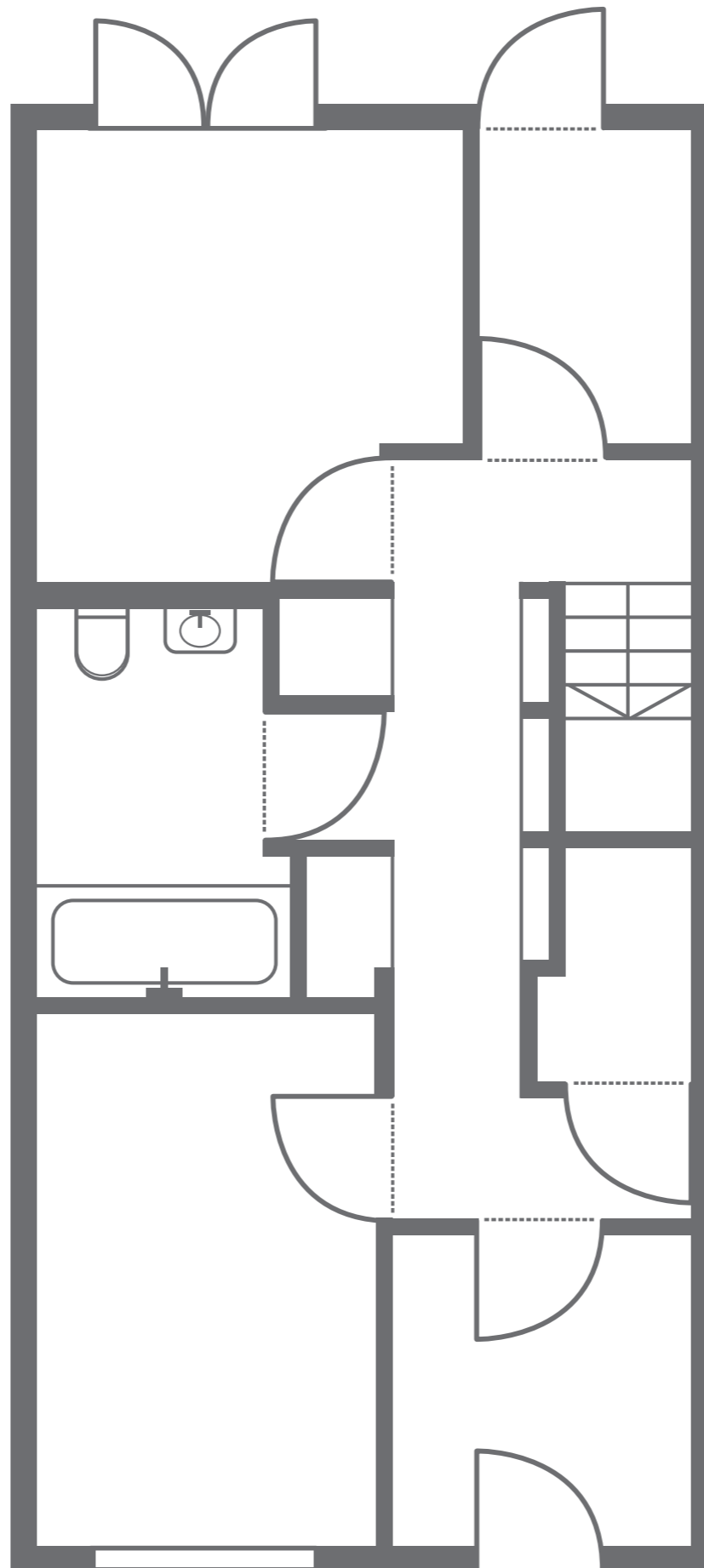
- Bath with shower over
- WC
- Basin
- Chrome taps & shower fittings
- Mirror with storage over
- Towel rail

Bathroom floor colour

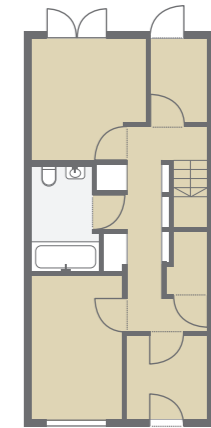
Stone grey
0749

Spine wall colour

23YV
62/816



Floor finishes



Timber
Oak stair

F12

The space

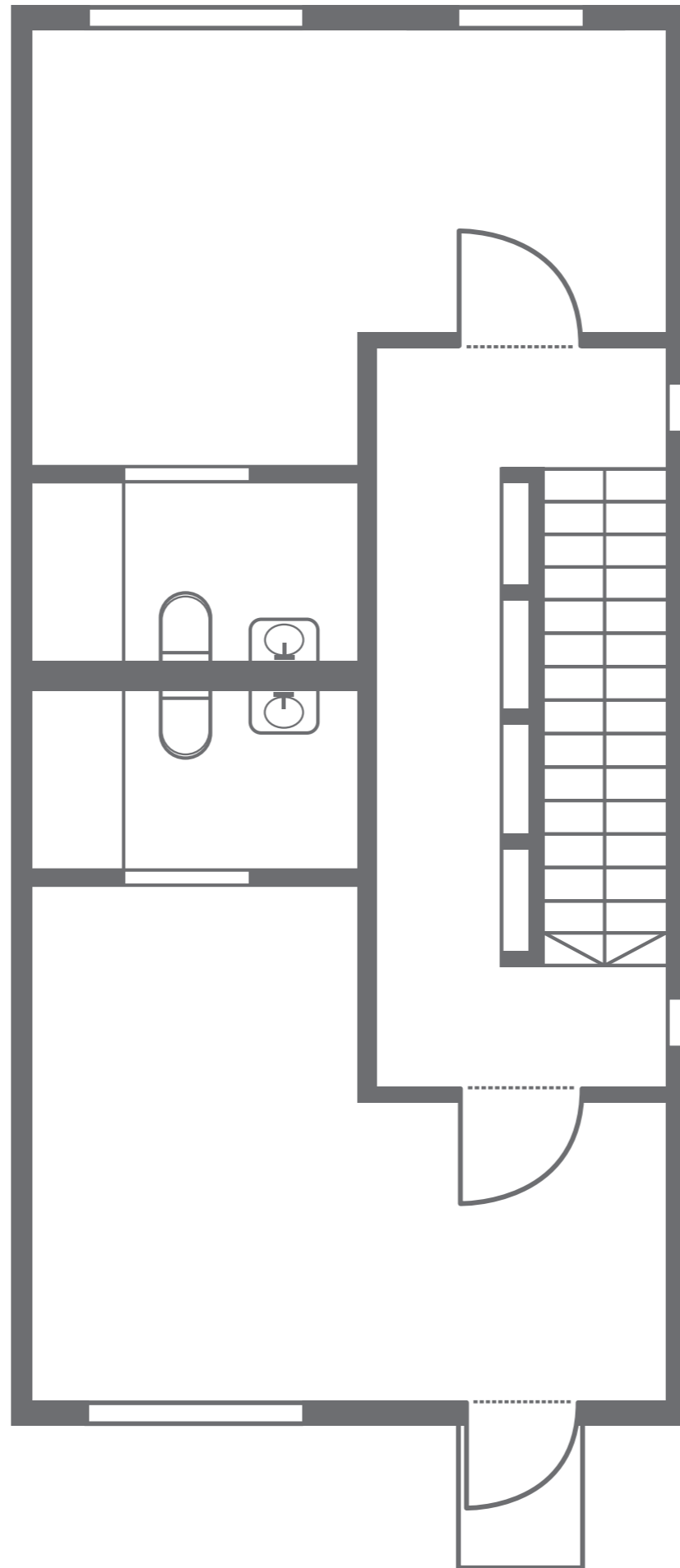
- x2 partitioned spaces with doors
- Balcony over front door
- x2 ensuite shower rooms

Bathrooms

- Shower
- WC
- Basin
- Chrome taps & shower fittings
- Mirror with storage over
- Towel rail

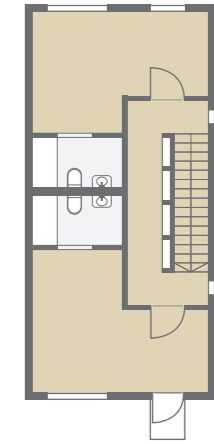
Bathroom floor colour

Stone grey
0749



GABLE

Floor finishes



Timber
Oak stair

S5

The space

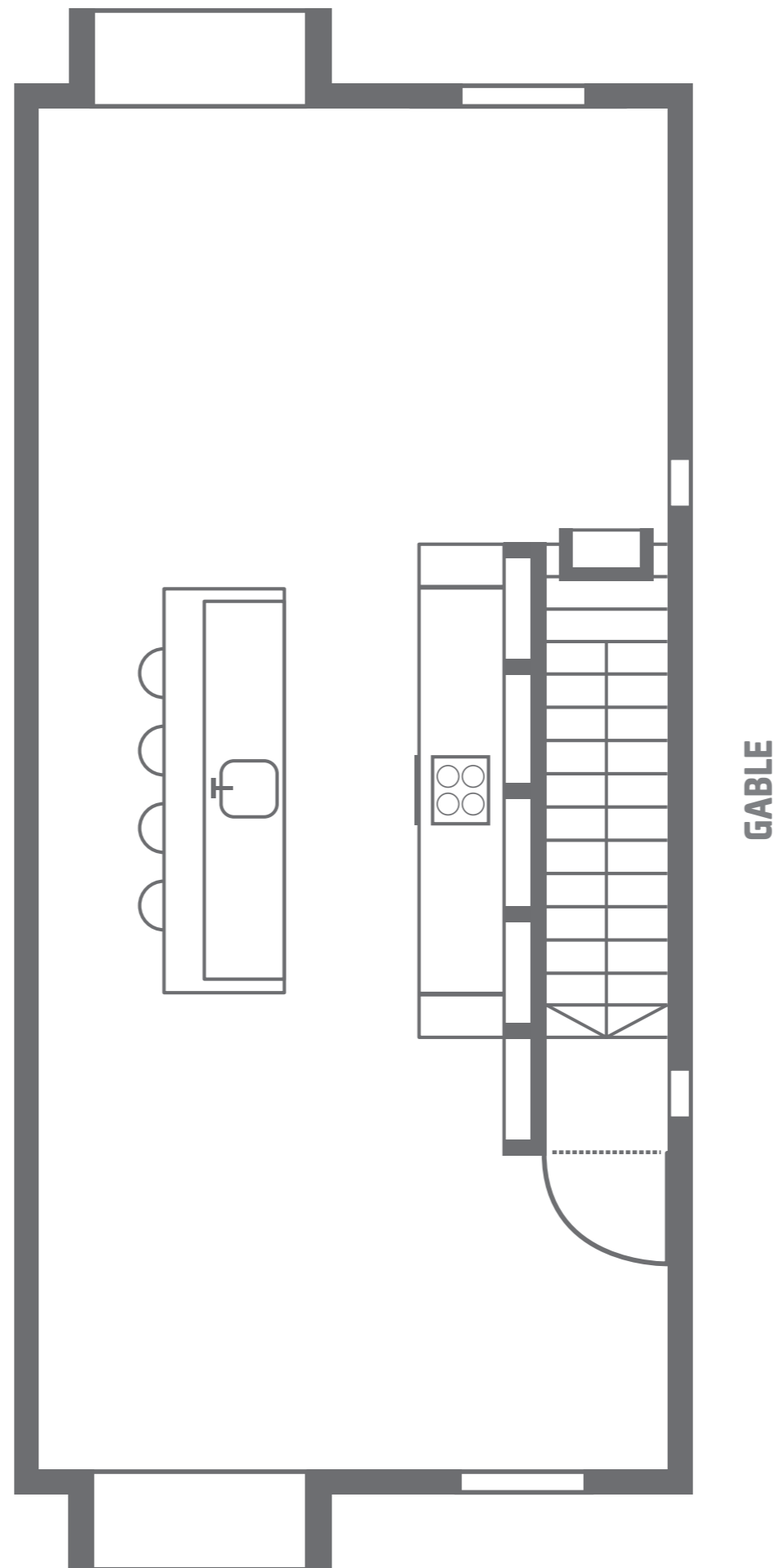
- Bay window to front
- Walk-in bay window to rear

Kitchen

- Handleless kitchen furniture with matching plinths
- x5 base units including integrated appliances and drawer units
- x5 base units island including integrated appliances, bin and drawer units
- x5 wall units including extract
- Solid core labgrade worktops with breakfast bar extension to island unit
- Acrylic splash-back
- Single bowl sink and chrome tap
- LED lights to underside of wall units
- Full height open shelves to ends of kitchen
- Integrated electric hob
- Integrated electric oven
- Integrated fridge
- Integrated freezer
- Integrated microwave
- Integrated dishwasher

Kitchen colour

High gloss
black



Floor finishes

