



**Guide Price**  
**£300,000**

**Freehold**

2x  1x  1x 

**Concorde Street,  
Faversham, Kent, ME13**

**OVER 60?**

Secure this property  
for up to **59% less!**

*Wards*  
Helping you move forwards



## Main features

- New development on the south side of Faversham
- Perfect first home
- Walking distance to national supermarket, town centre and mainline station
- Well insulated and economical house to run
- Good sized rear garden

## Accommodation

### GROUND FLOOR

Entrance Hall

Lounge: 12'9 x 11'6 (3.89m x 3.51m)

Inner Hall

Cloakroom

Kitchen/Diner: 14'7 x 9'4 (4.45m x 2.85m)

### FIRST FLOOR

Landing

Bedroom 1: 11'7 x 11'0 (3.53m x 3.36m)

Bedroom 2: 11'2 x 8'3 (3.41m x 2.52m)

Bathroom

### OUTSIDE

Front & Rear Gardens

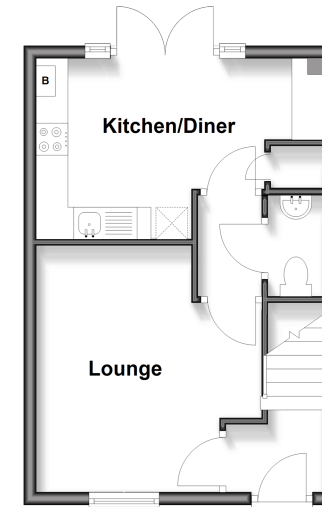
Driveway

Parking For 2 Cars

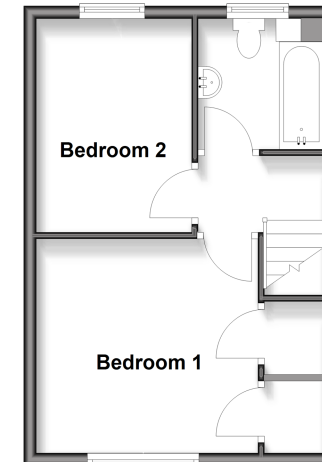
**Call Faversham - 01795 535517 ■ [wardsof Kent.co.uk](http://wardsof Kent.co.uk)**

- Legal advice should be taken to verify fixtures/fittings, planning, alterations and/or lease details
- Appliances & services are untested, dimensions are approximate and floor plans are not to scale
- Through a Homewise Home For Life Plan people aged 60+ can secure this property for up to 50% less, by purchasing a Lifetime Lease

**Ground Floor**  
Approx. 30.8 sq. metres (331.6 sq. feet)



**First Floor**  
Approx. 30.8 sq. metres (331.6 sq. feet)



10832434/20250930/PJ/PJ