



VILLAGE ESTATES

• EST.1993 •



93 Main Road, Sidcup, Kent DA14 6ND

Tel: 0208 302 1002

www.village-estates.com

Email: sidcup@village-estates.com



NO ONWARD CHAIN
TWO BEDROOMS
COMMUNAL GARDEN

GROUND FLOOR
SPACIOUS LIVING ROOM
RESIDENTS PARKING



39 Perry Street Gardens
Chislehurst, BR7 6PT

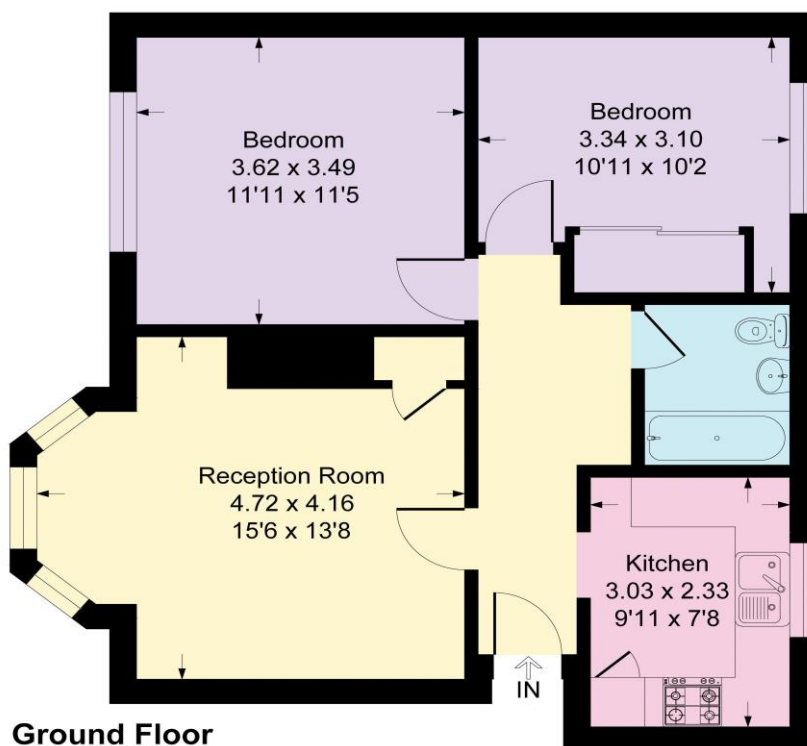
£300,000

SPACIOUS TWO-BEDROOM GROUND FLOOR MAISONETTE OFFERED WITH NO ONWARD CHAIN! Village Estates are delighted to present this well-presented two-bedroom maisonette, situated in a quiet and peaceful location. Located on the ground floor, this charming home offers a generous kitchen, a spacious living room perfect for relaxing and entertaining, and two well-proportioned bedrooms, all serviced by a family bathroom. Further benefits include access to a well-maintained communal garden with a spacious patio and lawn area, residents' parking, and a long lease, making it an ideal purchase for first-time buyers, young families or downsizers. We highly recommend an internal viewing to fully appreciate all that this exceptional home has to offer.



Perry Street Gardens, BR7

Approximate Gross Internal Area = 59.3 sq m / 639 sq ft



Ground Floor

CONSUMER PROTECTION FROM UNFAIR TRADING REGULATIONS 2008

Please note that any services, heating system or appliances have not been tested, and no warranty can be given or implied as to their working order. You are advised to obtain verification from your solicitor or surveyor. References to the tenure of a property are based on information supplied by the seller. We have not had sight of the title documents and a buyer is advised to obtain verification from their solicitor. Items shown in photographs are not included unless specifically mentioned within the sales particulars, but may be available by separate negotiation. Whilst every attempt has been made to ensure the accuracy of the floor plan contained here, measurements of doors, windows, rooms and any other items are approximate and no responsibility is taken for any error, omission, or mis-statement. We advise you to book an appointment to view before embarking on any journey to see a property, and check its availability. The accuracy of these details are not guaranteed and they do not form part of the contract.