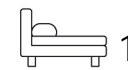


Living
made
better

Kent Building
London City Island, E14 0QG



£2,050 PCM

Kent Building, London City Island, E14 0QG

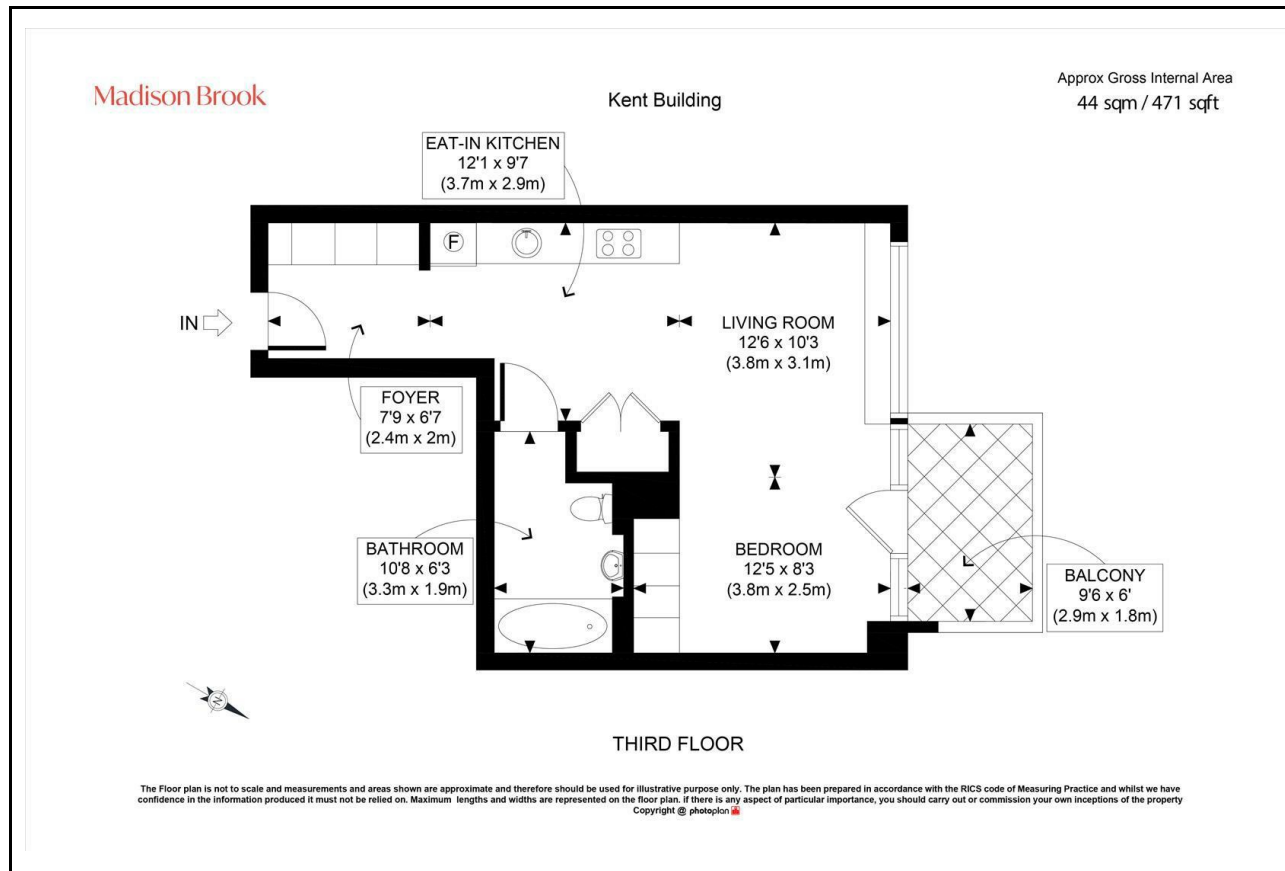
Madison Brook

Property Summary

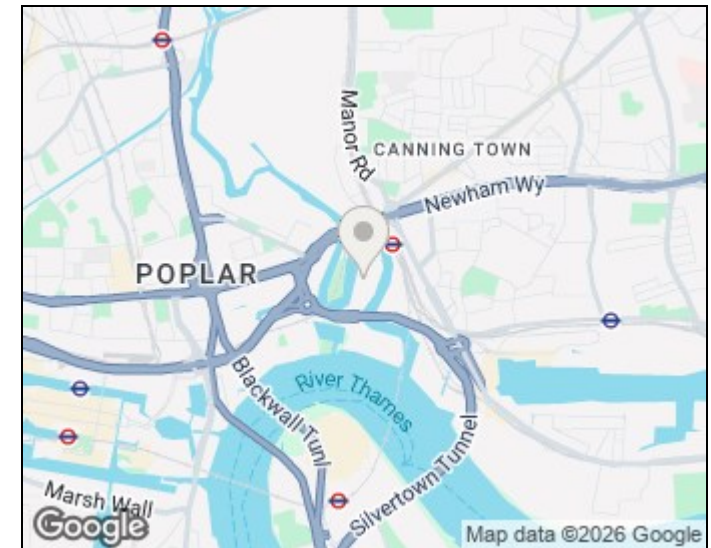
Located in the Kent Building, part of London City Island, this third-floor 471 sq. ft. furnished apartment features an eat-in kitchen, bright living room with balcony, double bedroom with built-in storage, and a fully tiled bathroom.

Residents benefit from a 24-hour concierge, outdoor heated pool, gym, cinema room and rooftop lounge. Close to Canning Town station and Canary Wharf.

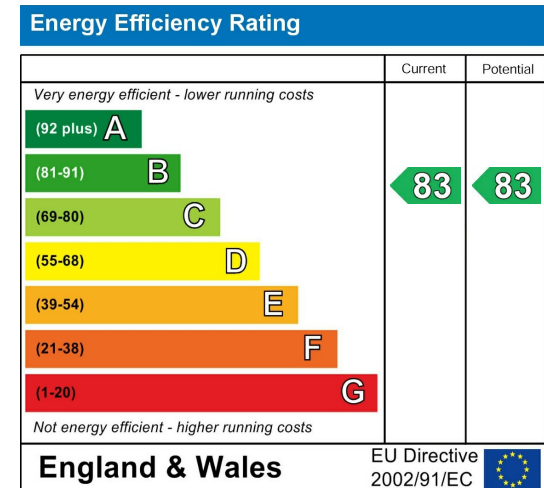
Floorplan



Area Map



Energy Efficiency Graph



These particulars, whilst believed to be accurate are set out as a general outline only for guidance and do not constitute any part of an offer or contract. Intending purchasers should not rely on them as statements of representation of fact, but must satisfy themselves by inspection or otherwise as to their accuracy. No person in this firm's employment has the authority to make or give any representation or warranty in respect of the property.

Unit B 20 Western Gateway, Royal Victoria
Dock, London, E16 1BS
Tel: 020 3946 6000 Email:
docklands@madisonbrook.com
<https://madisonbrook.com/>