



PORTLAND TERRACE
RICHMOND

JACKSON-STOPS 

PORTLAND TERRACE RICHMOND, TW9

ASKING PRICE: £4,995 PCM

In the heart of Richmond, overlooking The Green is this raised ground floor apartment, with two large bedrooms. The property has its own entrance, and the luxury of a private garden to enjoy all year round.

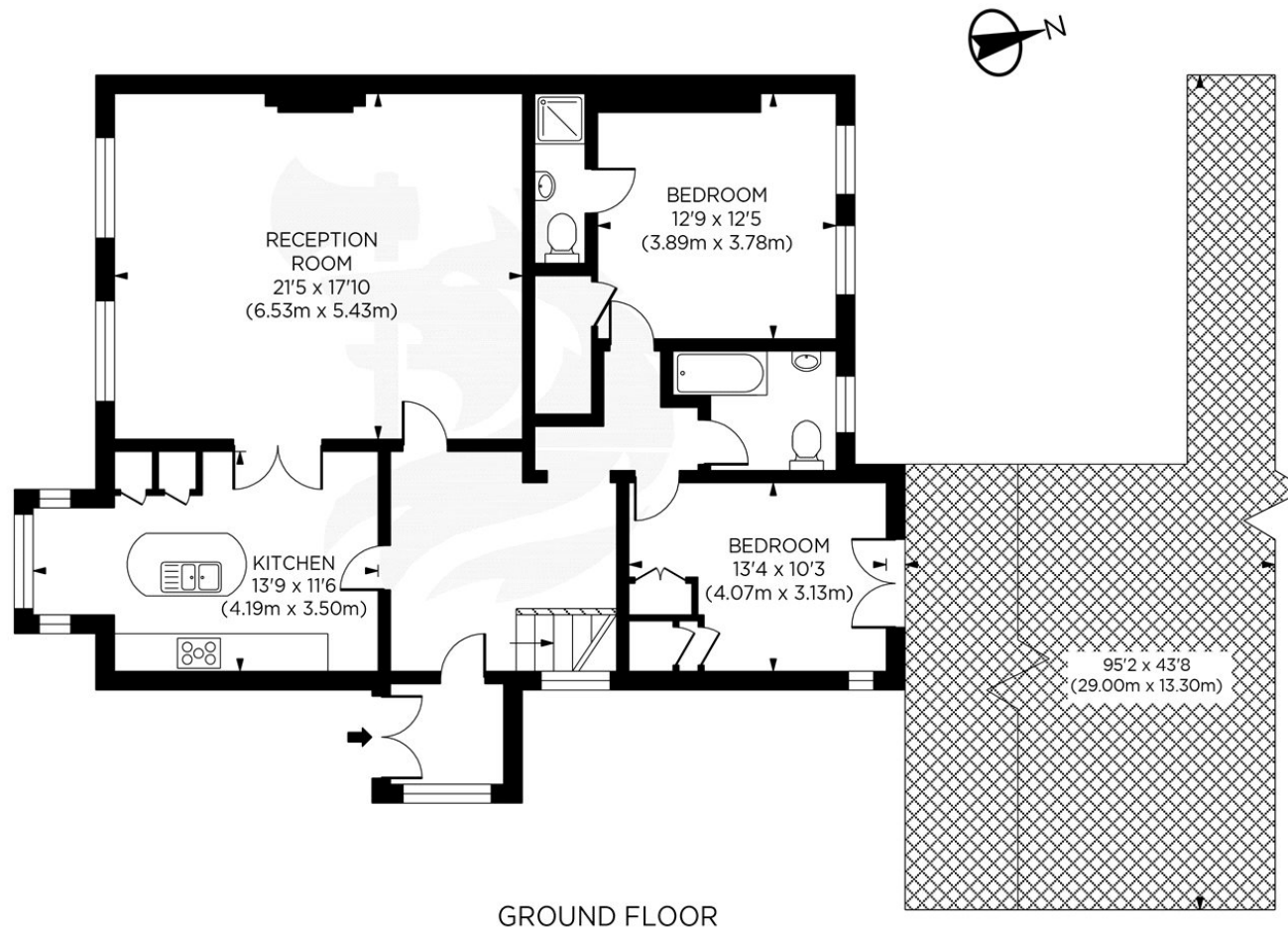
Located on Richmond Green, moments from Richmond town centre with its numerous shops, restaurants, two theatres and Richmond Station, National Rail (Waterloo to Reading line), London Underground District line and also the London Overground North London Line.

KEY FEATURES

- Rear Private Garden
- Excellent Location
- Two Bathrooms
- Overlooking The Green
- Two Double Bedrooms
- Listed Building







GROUND FLOOR

1 Portland Terrace TW9
Gross Internal Area 1223 sq ft/114 sq metres
cphotosandfloorplans.com

Energy Rating: C. We aim to make our particulars both accurate and reliable. However they are not guaranteed; nor do they form part of an offer or contract. If you require clarification on any points then please contact us, especially if you are travelling some distance to view. Please note that appliances and heating systems have not been tested and therefore no warranties can be given as to their good working order.

ASKING PRICE: £4,995 PCM

TEDDINGTON

020 8943 9955

teddington@jackson-stops.co.uk

jackson-stops.co.uk

JACKSON-STOPS 