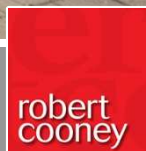




37 Scaffell Close Taunton TA1 4LG

£395,000





An immaculately presented, extended South-West facing 4 bed roomed semi-detached family home located in this popular location within 1.6 miles of the centre of town, close to local amenities, Musgrove Park Hospital and within The Castle School catchment with enclosed garden to rear, store and ample driveway parking.





Features

- Entrance Hall
- Living Room
- Fitted Kitchen / Dining Room with roof light, 2 integrated fridges, integrated dishwasher and French doors to garden
- Study
- Utility Room with integrated freezer and door to Store
- Cloakroom
- Master Bedroom with fitted wardrobes and Ensuite Shower Room
- 3 further Bedrooms, Bedrooms 2 & 3 with fitted wardrobes
- Family Bathroom with separate shower
- Enclosed garden to rear with useful shed
- Store
- Driveway parking for 3 cars
- Gas central heating
- Double glazing
- The Castle School catchment
- Council tax band D
- What3words:
[///abode.crop.boss](https://www.what3words.com/abode.crop.boss)



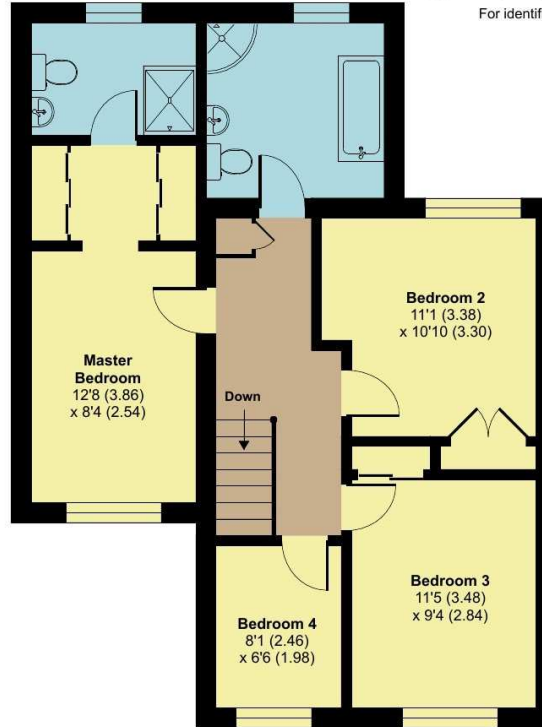
37 Scaffell Close, Taunton, TA1 4LG

Approximate Area = 1458 sq ft / 135.5 sq m

Garage = 66 sq ft / 6.1 sq m

Total = 1524 sq ft / 141.6 sq m

For identification only - Not to scale



Floor plan produced in accordance with RICS Property Measurement 2nd Edition, Incorporating International Property Measurement Standards (IPMS2 Residential). © nichecom 2026. Produced for Robert Cooney. REF: 1396142



Viewing strictly through the selling agents:

Robert Cooney

Corporation Street, Taunton,
Somerset TA1 4AW

Telephone 01823 230 230

taunton@robertcooney.co.uk

www.robertcooney.co.uk



For clarification, we wish to inform prospective purchasers that: these particulars are set out as a general outline only for the guidance of intended purchasers, and do not constitute, nor constitute part of, an offer or contract; all descriptions, dimensions, references to condition and necessary permission for use and occupation, and other details, are given without responsibility and any intending purchasers should not rely on them as statements or representation of fact, but must satisfy themselves by inspection or otherwise as to the correctness of each of them; no person in the employment of Robert Cooney has any authority to make or give any representation or warranty whatever in relation to this property; we have not carried out a detailed survey nor tested the services, appliances and specific fittings.

**robert
cooney**