

Gosford Way, Polegate



- £270,000 - £290,000 Guide Price
- 3D Virtual Tour
- CHAIN FREE
- Two Bedrooms
- Extended Semi Detached
- Bungalow
- Spacious Kitchen
- Lounge
- Driveway Leading To Garage
- Versatile Accommodation



Freehold

£270,000

Guide price

2 BEDROOM   1 RECEPTION   1 BATHROOM   1 GARAGE

## Gosford Way, Polegate

### DESCRIPTION

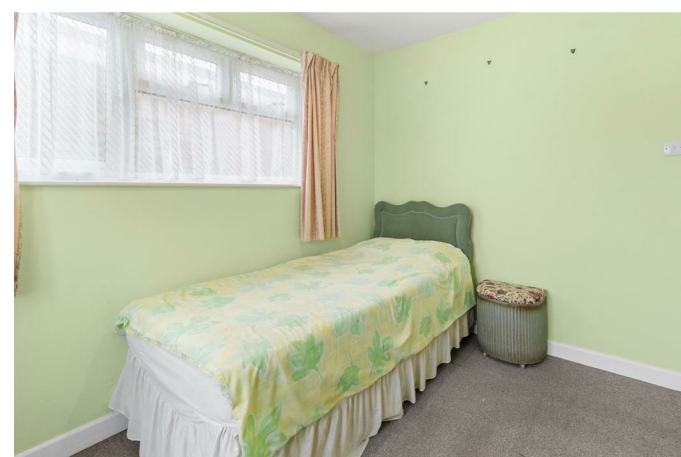
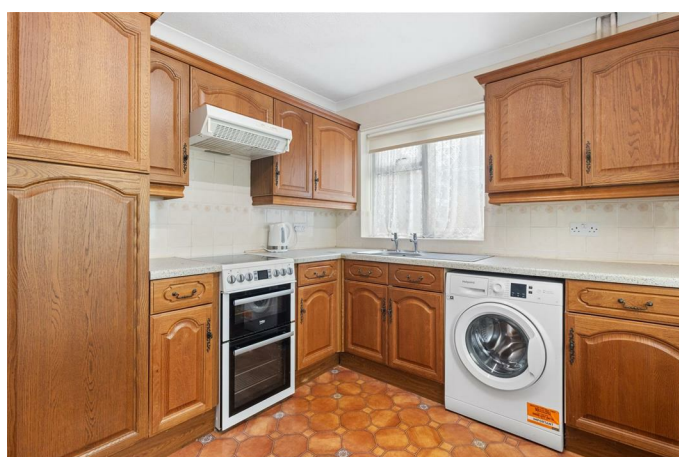
£270,000 - £290,000 Guide Price | 3D Virtual Tour | Semi Detached | Driveway Leading To Garage | Two Bedroom | Conservatory | Large Kitchen | Versatile Accommodation | Walkable To Train Station | CHAIN FREE

Situated within a sought after residential close in the heart of Polegate, this two bedroom semi-detached bungalow offers stylish and well maintained accommodation throughout, ideal for those seeking comfortable single storey living. Conveniently positioned within easy reach of the High Street, mainline railway station and local amenities.

The accommodation is bright and welcoming, featuring well proportioned rooms, a spacious living area providing a relaxation and entertainment space, whilst the kitchen offers ample storage and workspace with access into the conservatory. Both bedrooms are generously sized, complemented by a contemporary separate toilet and bathroom.

Externally, the property enjoys attractive front and rear gardens, creating a lovely outdoor setting to enjoy throughout the seasons. Further benefits include off road parking, garage, the advantage of being located within a quiet and established area of Polegate.

An internal viewing is highly recommended to fully appreciate the superb condition, convenient location and charming feel this beautiful bungalow has to offer.



## Gosford Way, Polegate

Hallway 5.26 x 1.6 (17'3" x 5'2")

Bedroom One 4.57 x 3.2 (14'11" x 10'5")

Bedroom Two 3.22 x 2.26 (10'6" x 7'4")

Sitting Room 4.05 x 3.2 (13'3" x 10'5")

WC 0.81 x 1.69 (2'7" x 5'6")

Bathroom 1.47 x 1.69 (4'9" x 5'6")

Kitchen 2.61 x 3.44 (8'6" x 11'3")

Conservatory 3.24 x 3.61 (10'7" x 11'10")

Front & Rear Garden

Driveway Leading To Garage

Council Tax

The amount payable for 2026-2027 is £2,453.98. This information is taken from voa.gov.uk