



144 Ashmead Road, Bedford, MK41 7FD



144 Ashmead Road
Bedford
MK41 7FD

OIEO £375,000

A versatile end of terrace town house...

End of terrace

Living room

Kitchen/dining room

Four bedrooms

Two bath/shower rooms

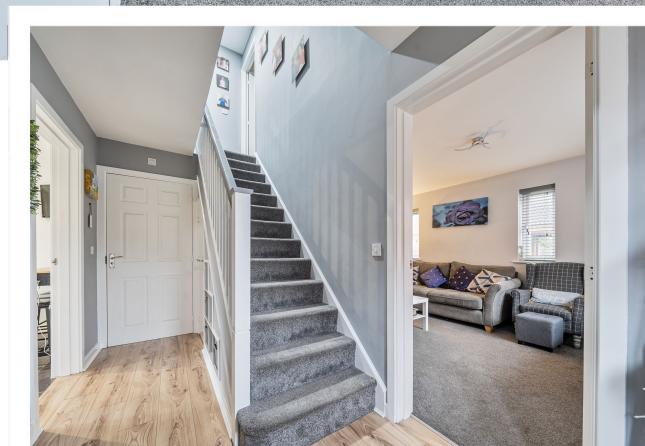
Cloakroom

Enclosed garden

Garage

Off road parking

Freehold



- Council Tax Band E
- Energy Efficiency Rating C

Offering spacious accommodation throughout...



Lane and Holmes are pleased to bring to the market this well-maintained end of terrace home, situated on Ashmead Road within the highly sought-after Woodlands Park area of Bedford with countryside walks on the doorstep. Offering generous and versatile accommodation arranged over three floors, this property is an ideal choice for families, professionals, or those seeking flexible living space.

The ground floor comprises a bright and airy living room and a fitted kitchen with ample space for dining, with patio doors that lead into the garden. There is also the added benefit of a convenient downstairs cloakroom.

On the first floor there are two bedrooms, of which the master offers fitted wardrobes and an en suite shower room, along with a

family bathroom.

The second-floor features two further generous size double bedrooms, offering excellent versatility for growing families, guests, or home working.

Further benefits include double glazed windows and gas central heating throughout.

Situated to the side of the property, the low-maintenance garden is thoughtfully arranged with patio areas and lawn, creating an ideal space for both relaxation and outdoor entertaining. There is a gate which provides direct access to a single garage in a block, offering extra storage and convenient off-road parking in front of it.

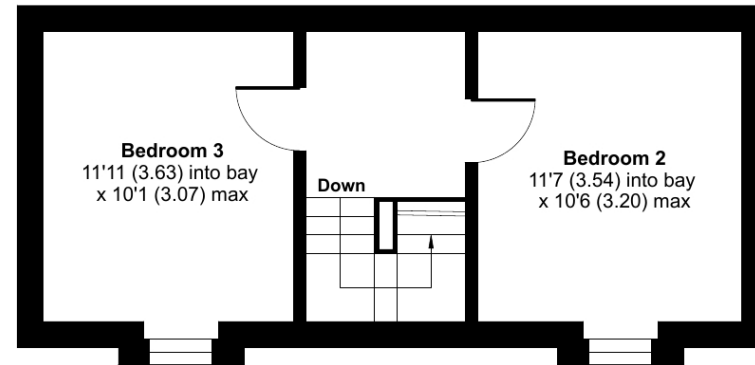
Nearby Brickhill has two popular shopping parades, local schools and recreational facilities. Bedford's town centre is located a short drive away, offering a whole host of further services and facilities including the picturesque Embankment and the mainline railway station which offers fast and frequent services to the capital.



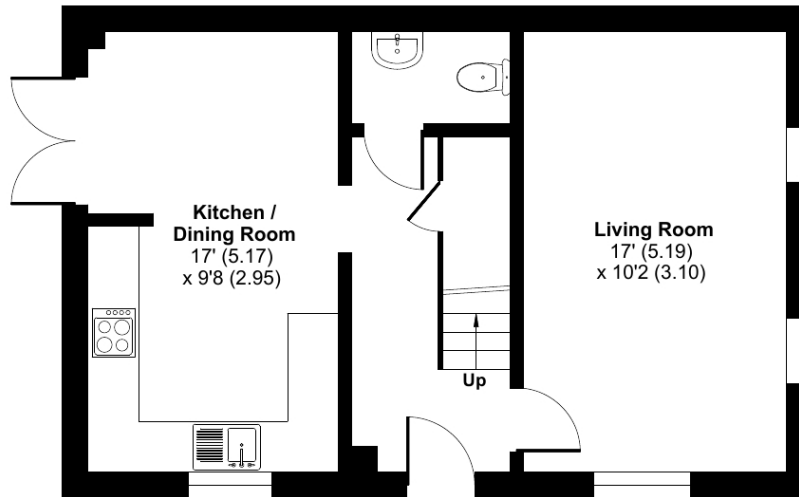
Ashmead Road, Bedford, MK41

Approximate Area = 1225 sq ft / 113.8 sq m

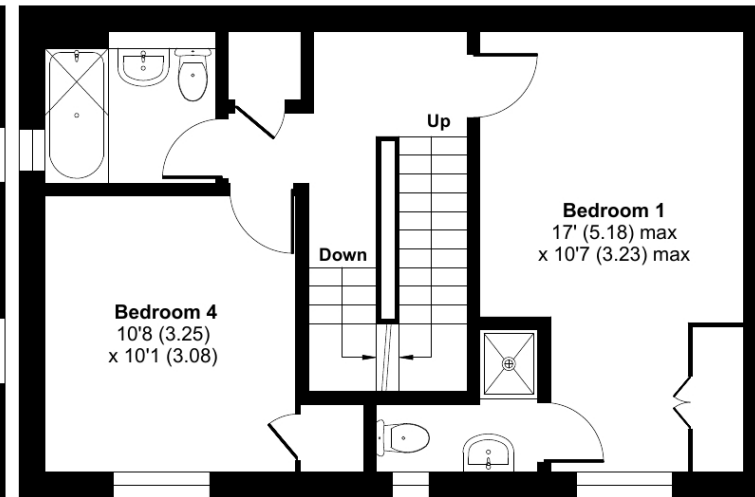
For identification only - Not to scale



SECOND FLOOR



GROUND FLOOR



FIRST FLOOR

 Floor plan produced in accordance with RICS Property Measurement 2nd Edition, Incorporating International Property Measurement Standards (IPMS2 Residential). © ncthemcom 2026. Produced for Lane & Holmes. REF: 1404310

01234 327744 | sales@laneandholmes.co.uk | www.laneandholmes.co.uk | 66-68 St Loyes Street, Bedford, Bedfordshire, MK40 1EZ

Agents Notes: The agent has not tested any apparatus, equipment, fixtures & fittings or services and so cannot verify that they are in working order or fit for the purpose. A buyer is advised to obtain verification from their solicitor or surveyor. All photographs shown are for illustration only and may depict items that are not for sale or included in the sale of the property. Please note that we have not checked the situation with regards to planning consents, building regulation consents and any other relevant consent relating to this property and therefore, any interested applicant should carry out their own enquiries with the appropriate authorities. All measurements are approximate and for guidance only. The particulars do not form part of any contract and all properties are offered subject to contract.