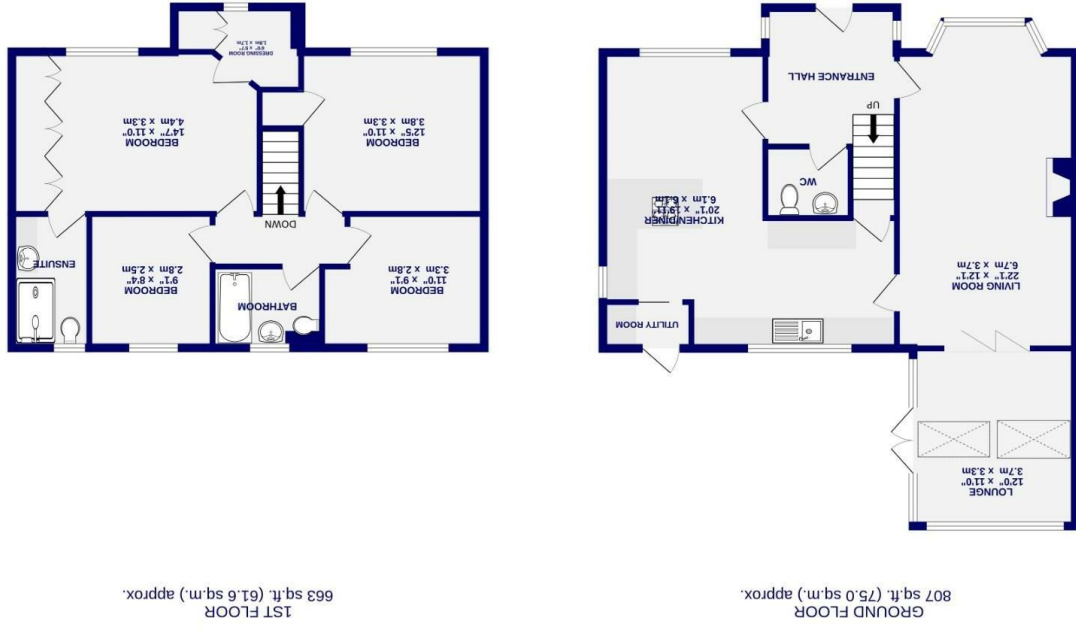


These particulars have been prepared as accurately and as reliably as possible, but should not be relied upon as 'statement of fact', if there is any point which is of particular importance to you, please contact the office and we would be pleased to check the information. We have not tested any services, appliances, equipment or facilities and nothing in these particulars should be deemed to be a statement that they are in good working order, or that the property is in good structural condition or otherwise. Any areas, measurements, floor plans or distances referred to are given as a guide only and are not precise. Purchasers must satisfy themselves by inspection or by otherwise regarding the items mentioned above and as to the correctness of each of the statements contained in these particulars. No person in the employment of Ashtons has any authority to make or give any representation or warranty whatsoever in relation to this property or these particulars nor enter into any contract relating to the property on behalf of the vendor. Please note that some images may have been edited with the use of AI. We are legally required to carry out AML checks for all purchasers, sellers and giftors, which become mandatory once an offer has been accepted. There is a non-refundable fee of £30 + VAT per purchaser and per giftor for these checks.

Dykes Lane Copmanthorpe, York YO23 3YT

Freehold
Council Tax Band - E

- Substantial Detached Family Home
- Four Well Proportioned Bedrooms
- Contemporary Kitchens Kitchen Diner
- Spacious Living Room Across Depth
- Corner Plot With Landscaped Garden
- Sought After Copmanthorpe Village
- Primary Suite With Ensuite
- Separate Dressing Room Or Office
- Double Garage And Driveway
- NO ONWARD CHAIN. EPC D



Dykes Lane
Copmanthorpe, York
YO23 3YT

Offers Over £555,000



Located in the highly sought-after village of Copmanthorpe, just south of York, this substantial four bedroom detached family home offers spacious and versatile living accommodation throughout. Copmanthorpe remains a popular choice for families, benefiting from a range of local amenities including shops, eateries, well-regarded schools and excellent bus connections into York city centre.

From the bright and welcoming entrance hall, the heart of the home unfolds into the impressive kitchen diner, positioned to the side and rear of the property. Fitted with sleek Kutchenhaus units, integrated appliances and a breakfast bar, this contemporary space is ideal for both everyday living and entertaining. A separate utility room is set to the rear, providing direct access to the garden.

The generous living room can be accessed from both the kitchen and the entrance hall, spanning the depth of the property and offering a wonderful space for family relaxation. To the rear, a lovely orangery-style conservatory provides further reception space and enjoys views over the garden and access into the private space. A downstairs WC completes the ground floor accommodation.

To the first floor are four well proportioned bedrooms. The primary bedroom is positioned to the front of the property and is substantial in size, featuring a modern en-suite finished with neutral tiles, along with a separate dressing area or useful home office space. The contemporary house bathroom is fitted with a shower over the bath and finished with stylish grey slate tiles.

Occupying a corner plot, the property stands proudly with a pathway leading to the front door and neat lawns to either side. The landscaped rear garden offers privacy and access to the double garage and driveway, which are situated within a quiet cul-de-sac setting.

A fantastic opportunity to acquire a spacious family home in one of York's most desirable village locations. Early viewing is highly recommended to fully appreciate.

