



77 Havelock Street  
Kettering, NN16 9QA



**Simpson & Partners**

Simpson and Partners are excited to welcome this 2 bed terraced home to the market!

Situated only a short walk from the town centre, the property boasts two reception rooms, kitchen and downstairs bathroom.

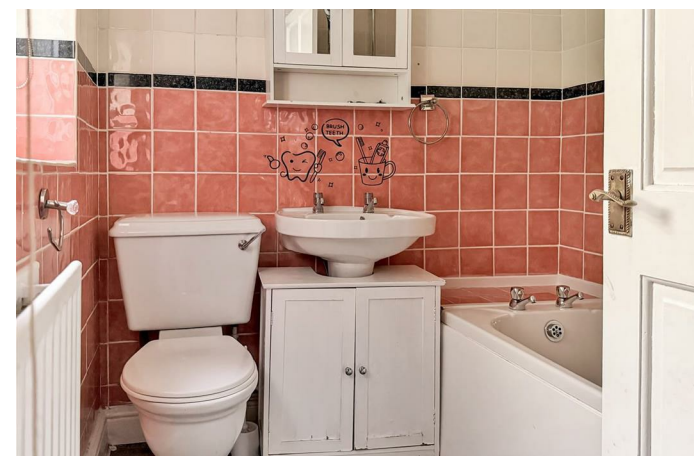
Upstairs, you find two double bedrooms with the main bedroom overlooking the enclosed garden.

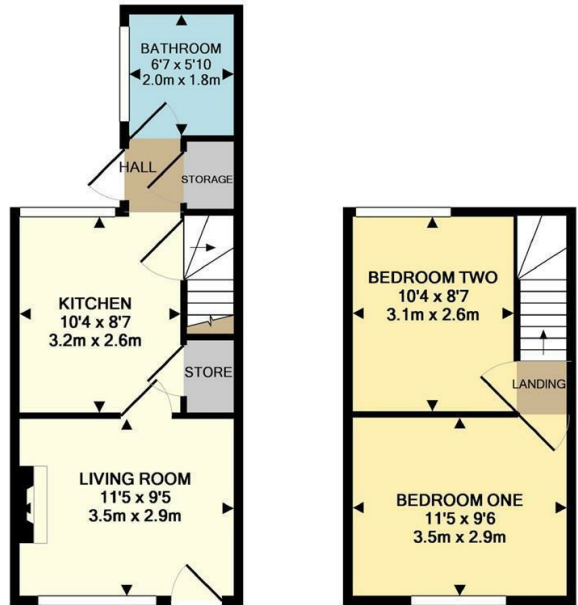
Available now!

EPC: C

Council Tax Band: A

£795 PCM





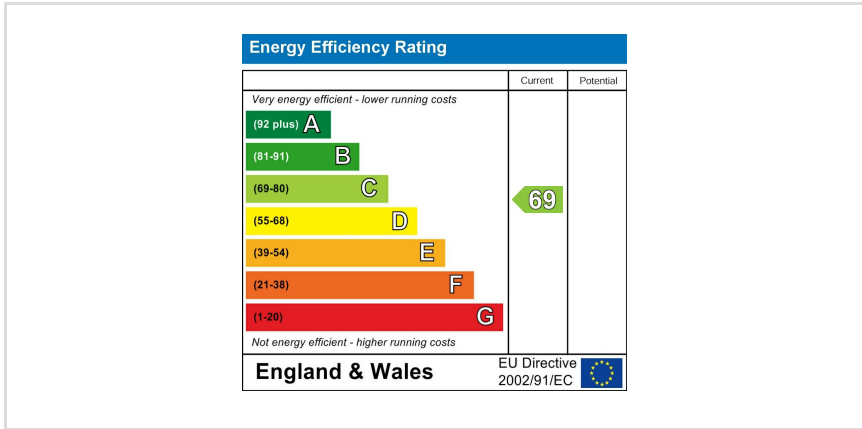
GROUND FLOOR  
APPROX. FLOOR  
AREA 285 SQ.FT.  
(26.5 SQ.M.)

1ST FLOOR  
APPROX. FLOOR  
AREA 225 SQ.FT.  
(20.9 SQ.M.)

TOTAL APPROX. FLOOR AREA 510 SQ.FT. (47.4 SQ.M.)

Whilst every attempt has been made to ensure the accuracy of the floor plan contained here, measurements of doors, windows, rooms and any other items are approximate and no responsibility is taken for any error, omission, or mis-statement. The plan is copyright to Simpson and Partners and is for illustrative purposes and should only be used as such by any prospective purchaser. The services, systems and appliances shown have not been tested and no guarantee as to their operability can be given.

Made with MemoPro©2018



When you buy with Simpson and Partners, you know **you'll be in safe hands**. From the moment you walk through our doors, we'll make you **feel truly welcome**. Our sales consultants and financial advisors will take you through **every step of the process**, offering **free expert advice** along the way, from help choosing the right mortgage and insurance through to finding your conveyancer. And if you need help selling your home too, **with over 20 years of local experience, you can trust us to get you moving**.



**Simpson  
& Partners**

Making Every  
Journey Personal



01536 518200

[kettering@simpsonandpartners.co.uk](mailto:kettering@simpsonandpartners.co.uk)

<https://www.simpsonandpartners.co.uk/>

1 Silver Street, Kettering, Northants, NN16 0BN