



Eagle Street, Cambridge  
Offers Over £420,000 **Leasehold**

**Sharman  
Quinney**

# Key Features



240 Years remaining as of 01 Jan 2021

£3100.00 Ground Rent p/a

Review due: Ask Agent

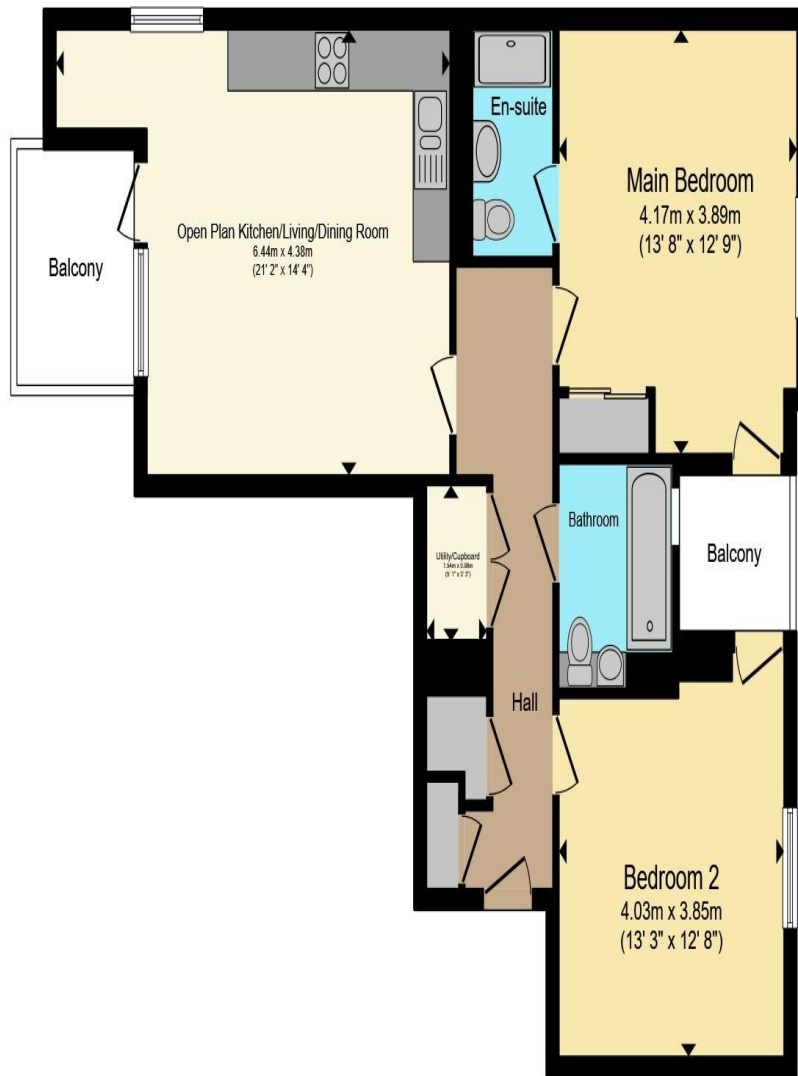
£3100.00 Service Charge p/a

Review due: Ask Agent

- Prime Location with Easy Access to Cambridge Railway Station
- Prestigious Ironworks Development
- First Floor Apartment
- Bright Open Plan Living/Kitchen Area
- Two Spacious Double Bedrooms
- Underfloor Heating
- Secure Undercroft Parking

Situated within the highly acclaimed Ironworks development by Hill, just off Mill Road in the sought-after Petersfield district, the property offers excellent access to the railway station and Cambridge city centre.





**First Floor**

Total floor area 74.1 m<sup>2</sup> (798 sq.ft.) approx

This floor plan is for illustrative purposes only. It is not drawn to scale. Any measurements, floor areas (including any total floor area), openings and orientation are approximate. No details are guaranteed, they cannot be relied upon for any purpose and they do not form part of any agreement. No liability is taken for any error, omission or misstatement. A party must rely upon its own inspection(s). Powered by [www.propertybox.io](http://www.propertybox.io)

**Sharman  
Quinney**

Located on the first floor with lift and stair access, the apartment features a welcoming entrance hall with Amtico flooring, a secure entry phone system, and ample built-in storage.

The open-plan sitting room and kitchen benefit from large windows providing abundant natural light. The modern kitchen includes a range of wall and base units, integrated appliances, and access to a private balcony overlooking the communal areas.

There are two generous double bedrooms, with an en-suite shower room to the principal bedroom, alongside a stylish family bathroom.

Additional benefits include underfloor heating and secure undercroft parking.

Entrance hall

Open plan kitchen / living area - 6.44m x 4.38m (21'2 x 14'4)

Balcony

Bedroom one - 4.17m x 3.89m (13'8 x 12'9)

En-suite

Bedroom two - 4.03m x 3.85m (13'3 x 12'8)

Balcony

To view this property call Sharman Quinney on:  
**01223 426139**

# Selling your property?

Contact us to arrange a **FREE** home valuation.

 01223 426139

 Unit 5 Orchard House Unwin Square, Orchard Park, CAMBRIDGE, Cambridgeshire, CB4 2AD

 orchardpark@sharmanquinney.co.uk

 [www.sharmanquinney.co.uk](http://www.sharmanquinney.co.uk)



 SCAN ME



Sharman Quinney Holdings Limited is registered in England and Wales under company number 4174227, Registered Office is Cumbria House, 16-20 Hockliffe Street, Leighton Buzzard, Bedfordshire, LU7 1GN. VAT Registration Number is 500 2481 05.

1: These particulars do not constitute part or all of an offer or contract. 2: The measurements indicated are supplied for guidance only and as such must be considered incorrect. 3: Potential buyers are advised to recheck the measurements before committing to any expense. 4: Sharman Quinney has not tested any apparatus, equipment, fixtures, fittings or services and it is the buyers interests to check the working condition of any appliances. 5: Sharman Quinney has not sought to verify the legal title of the property and buyers must obtain verification from their legal representative. 6: Intending purchasers will be asked to produce identification documentation at a later stage and we would ask your co-operation in order that there will be no delay in agreeing the sale. Ref: ORP102283 - 0005

