

Monza Street, E1W

£3,400 Per month



- Two Bedroom
- Two Bathroom
- Balcony

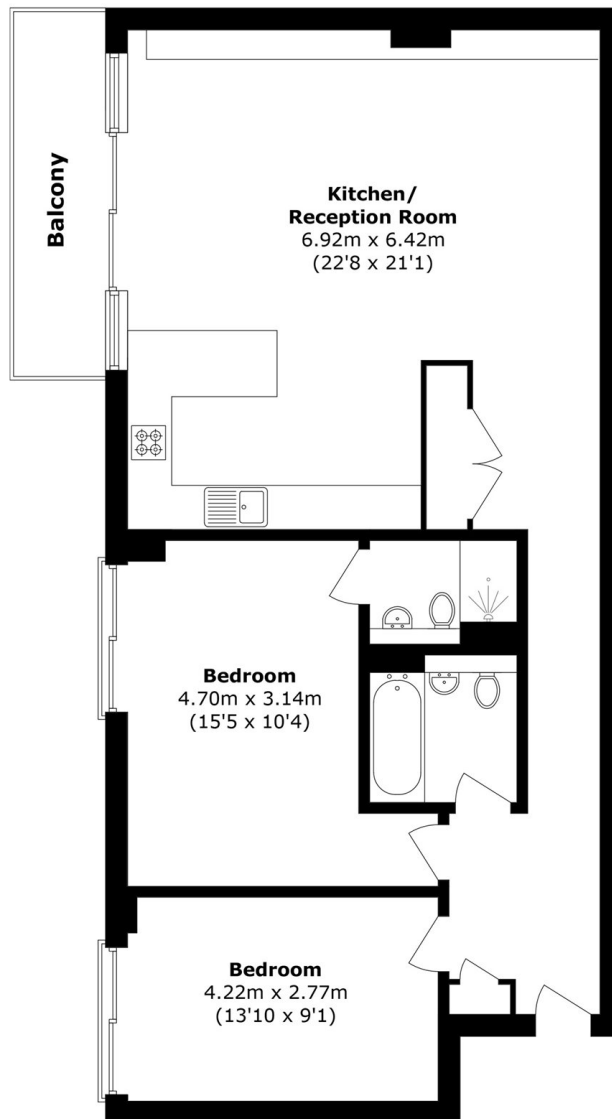
- High Ceilings
- Parking
- Wapping



A well-presented two bedroom, two bathroom apartment on the 2nd floor of this popular gated development overlooking the Historic Wapping Pump Station. The apartment offers open plan living, a fully fitted kitchen with breakfast bar, high ceilings and a private balcony.

Ideally located close to St Katharine's Docks with a wide selection of pubs, bars, restaurants and cafés nearby. Only a short walk from Wapping Overground Station, Tower Hill stations, DLR links, and buses right around the corner for an easy access to the City, London Bridge, Canary Wharf or Shoreditch.





Total area (approx.): 90.8 sq. m (977.3 sq. ft)

Balcony area (approx.): 6.1 sq. m (65.6 sq. ft)

35A Wapping High Street,
London, E1W 1NR
020 7702 3456
ea2group.com