



Price
£525,000

Freehold

4x  1x  2x 

**Copper Tree Court,
Loose, Maidstone, Kent,
ME15**

OVER 60?

Secure this property
for up to **59% less!**

Wards
Helping you move forwards



Main features

- **Fantastic size family home with a private rear garden**
- **Well presented throughout**
- **Quiet cul de sac location**
- **Short walk to sought after Loose Primary School and the picturesque Loose Valley conservation area**
- **Popular location with local shops and amenities nearby**

Accommodation

GROUND FLOOR

Entrance Porch
Hallway
Downstairs Cloakroom: 6'0 x 3'0 (1.83m x 0.92m)
Lounge: 20'1 x 11'1 (6.13m x 3.38m)
Dining Room: 14'1 x 9'6 (4.30m x 2.90m)
Kitchen: 13'1 x 10'0 (3.99m x 3.05m)

FIRST FLOOR

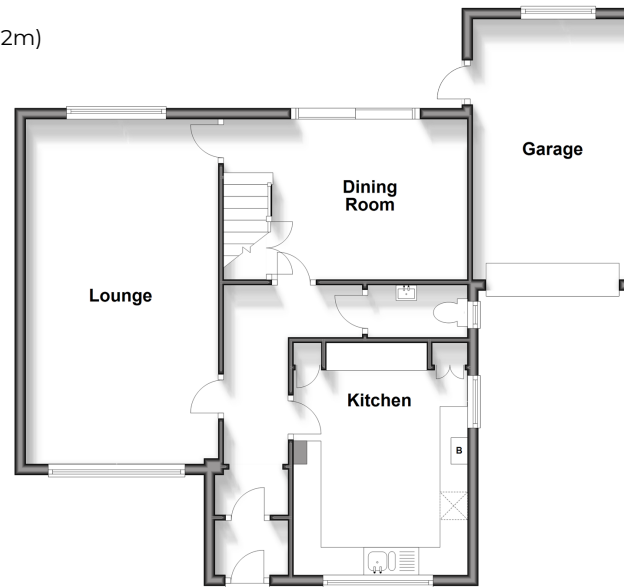
Landing
Bedroom 1: 11'1 x 11'0 (3.38m x 3.36m)
Bedroom 2: 11'1 x 11'1 (3.38m x 3.38m)
Bedroom 3: 8'1 x 8'0 (2.47m x 2.44m)
Bedroom 4: 8'1 x 6'1 (2.47m x 1.86m)
Bathroom: 7'1 x 5'0 (2.16m x 1.53m)

OUTSIDE

Garage and Driveway
Front and Rear Gardens

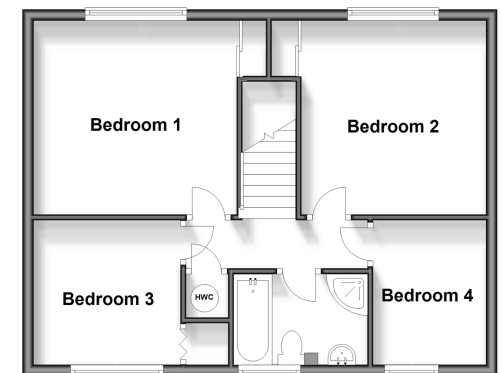
Ground Floor

Approx. 73.1 sq. metres (786.5 sq. feet)



First Floor

Approx. 51.4 sq. metres (553.5 sq. feet)



Call Loose - 01622 744067 ■ wardsofkent.co.uk

- If buying to let, the energy rating will need to be improved to at least 'E' rating before you can let the property
- Appliances & services are untested, dimensions are approximate and floor plans are not to scale

- Legal advice should be taken to verify fixtures/fittings, planning, alterations and/or lease details
- Through a Homewise Home For Life Plan people aged 60+ can secure this property for up to 59% less, by purchasing a Lifetime Lease.



13158484/20240926/KIR/AS