



# The Academy

16 Highgate Hill, N19

£475 per week  
(£2,058.33 pcm)

A fantastic, modern loft style apartment set within a converted Victorian school which retains many original features such as; double-height ceilings, stripped wooden floors, exposed brickwork, large sash windows and an allocated parking space.

**CHESTERTONS**



# The Academy

## 16 Highgate Hill, N19

- One-Bedroom Modern Loft Style Apartment
- Open Plan Kitchen & Reception Room
- Large Bedroom With En-Suite Wet Room
- Dressing/Guest Room/Study
- Secure Allocated Parking Space
- Double-Height Ceilings & Exposed Brickwork



A truly stunning must-see loft style apartment set within a converted Victorian school which retains many original features such as double-height ceilings, stripped wooden floors, exposed brickwork and large sash windows.

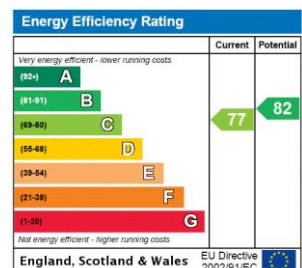
This duplex apartment comprises; a large open plan living room and kitchen, a large double bedroom with an ensuite wet room, a dressing room/guest bedroom/study mezzanine area and a family bathroom

Situated moments from the shops, bars and restaurants of Highgate Village, Archway tube station (Northern Line) and the beautiful Waterlow Park.

The property also benefits from having the heating and hot water included within the rent as well as having its own designated parking space within the secure gated development of The Academy.

**Tenure:** Long Let  
**Unfurnished**

Additional tenant charges apply (fees apply to non-AST tenancies only)  
 Tenancy Agreement Fee: £300  
 References per Tenant/Guarantor: £60  
 Inventory check (approx. £100 – £250 inc. VAT)  
[chestertons.com/property-to-rent/applicable-fees](https://www.chestertons.com/property-to-rent/applicable-fees)

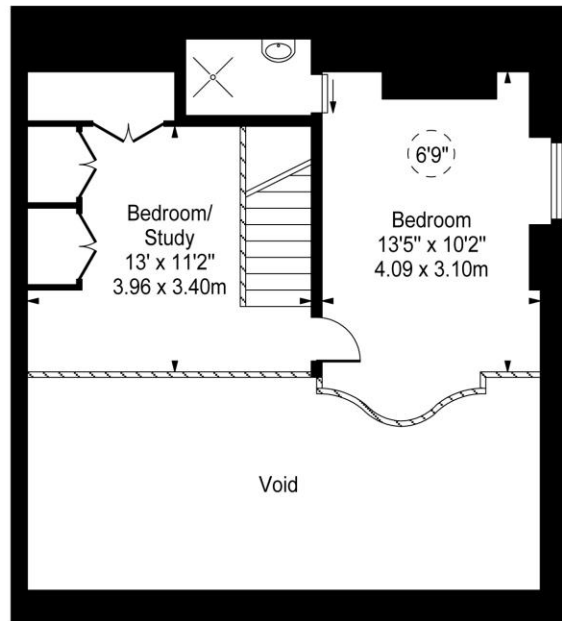
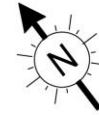


### *Chestertons Kentish Town Lettings*

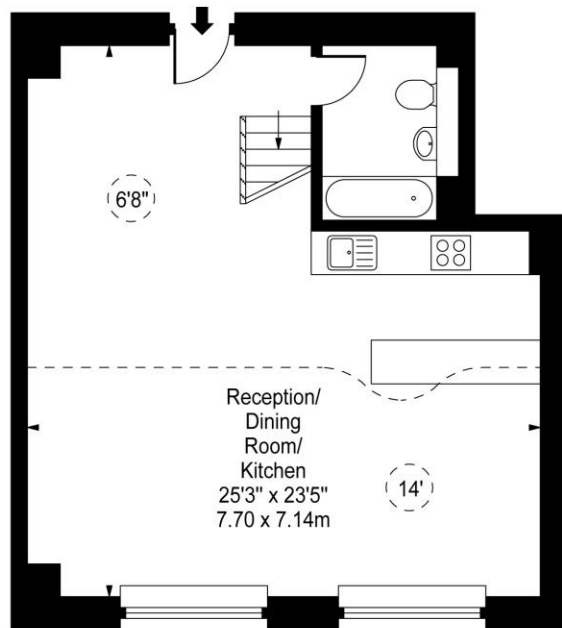
225 Kentish Town Road  
 London  
 NW5 2JU  
[lettings.kentishtown@chestertons.com](mailto:lettings.kentishtown@chestertons.com)  
 02072671010  
[chestertons.com](https://www.chestertons.com)

# The Academy, Highgate Hill, N19

○ - Ceiling Height



Second Floor  
(Mezzanine)



First Floor

Approx Gross Internal Area **895 Sq Ft - 83.15 Sq M**  
(Excluding Void)

For Illustration Purposes Only - Not To Scale  
www.goldlens.co.uk  
Ref. No. 009765K