



149 Moss Delph Lane, Aughton

Ormskirk

Guide Price £1,600,000

149 Moss Delph Lane

Aughton, Ormskirk

Stunning 6-bed detached home (4,986 sq ft) on exclusive Moss Delph Lane. Luxury finishes, open-plan living, landscaped gardens, garage, games room, ultrafast broadband, and freehold. Council Tax band: H

Tenure: Freehold

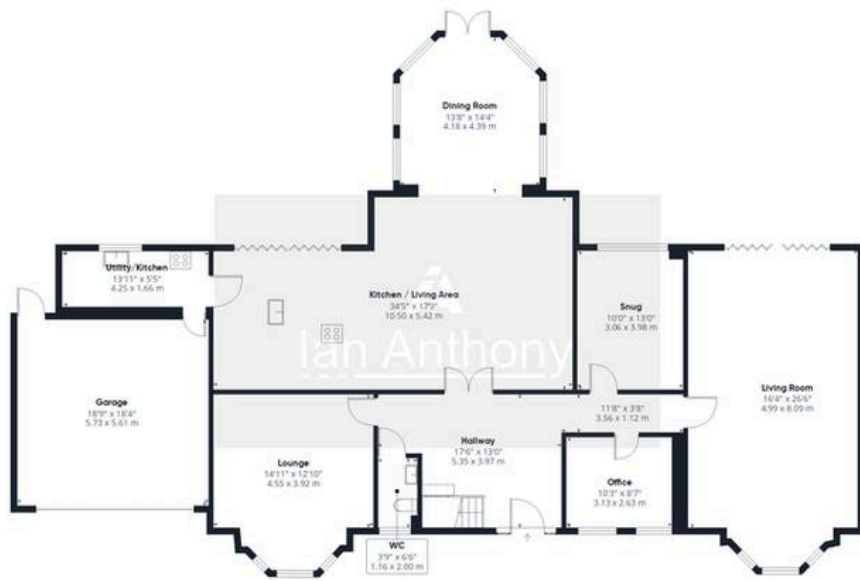
EPC Energy Efficiency Rating: C

EPC Environmental Impact Rating: C

- Large garage & driveway
- Flexible games/cinema room
- 986 sq ft
- Stunning open-plan living
- Garden
- Six spacious bedrooms
- Landscaped private gardens
- Electric gated entrance
- Multiple reception rooms
- Luxury high-gloss kitchen
- Prestigious Aughton location
- Approx. 4







Ground Floor



Floor 1

Approximate total area⁽¹⁾

4896 ft²

454.9 m²

Reduced headroom

80 ft²

7.4 m²

(1) Excluding balconies and terraces

Reduced headroom

..... Below 5 ft/1.5 m

Calculations reference the RICS IPMS 3C standard. Measurements are approximate and not to scale. This floor plan is intended for illustration only.

GIRAFFE 360



Floor 2



IAN ANTHONY

5 Burscough Street, Ormskirk - L39 2EG

01695580888

enquiries@iananthonyestates.co.uk

iananthonyestates.co.uk/

