



Blackford, King's Lynn, PE30 3UL

welcome to

Blackford, King's Lynn

Located in the popular area of Templemead and being conveniently close to local amenities is this very well presented four bedroom detached family home which is being offered with no onward chain. Viewing highly recommended.



Double Glazed Entrance Door To

Entrance Hall

Radiator, stairs to first floor

Cloakroom

Low level WC, wash hand basin

Lounge

12' 2" max x 16' 10" (3.71m max x 5.13m)

Double glazed window, radiator, opening to:-

Dining Room

14' 10" max x 7' 9" (4.52m max x 2.36m)

Double glazed window, double doors to conservatory, archway to:-

Kitchen

11' 6" x 7' 3" (3.51m x 2.21m)

Range of base and wall units, roll edge work top inset stainless steel sink with mixer tap over, space for cooker, washing machine and fridge, wood effect flooring, double glazed window, double glazed door to rear

Conservatory

14' x 9' 7" (4.27m x 2.92m)

UPVC construction under polycarbonate roof, door to rear, ceramic tiled floor, radiator

First Floor Landing

Bedroom One

14' x 8' 8" max (4.27m x 2.64m max)

Double glazed window, radiator

Bedroom Two

11' 5" x 8' 10" (3.48m x 2.69m)

Double glazed window, radiator

Bedroom Three

11' 10" x 6' 5" min (3.61m x 1.96m min)

Double glazed window, radiator

Bedroom Four

8' 6" x 6' 3" (2.59m x 1.91m)

Double glazed window, radiator

Bathroom

Bath with mains shower over, low level WC, wash hand basin in vanity unit, vinyl floor, radiator, double glazed window

Outside

To the front of the property is a gravel drive giving off road parking for 3/4 cars and leads to a single garage with up and over door, power and light. The remainder of the front garden is laid mainly to lawn. The rear garden is also laid mainly to lawn with a variety of mature shrubs and plants and is enclosed by timber fencing.



check out more properties at williamhbrown.co.uk



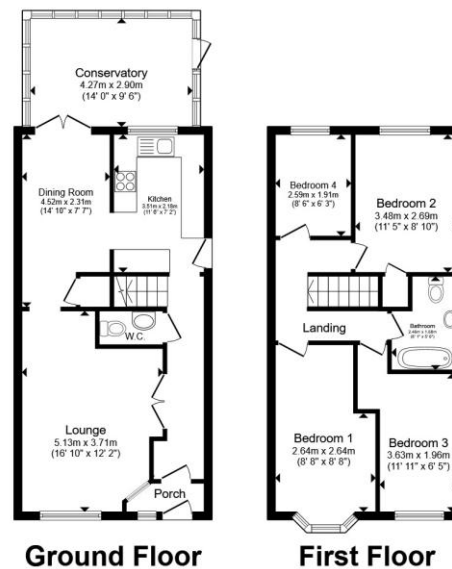
welcome to

Blackford, King's Lynn

- Popular Area of Templemead
- Detached Family Home
- Four Bedrooms
- Spacious Lounge/Diner
- Conservatory

Tenure: Freehold EPC Rating: C
Council Tax Band: C

£310,000



Total floor area 106.8 m² (1,150 sq.ft.) approx

This floor plan is for illustrative purposes only. It is not drawn to scale. Any measurements, floor areas (including any total floor area), openings and orientation are approximate. No details are guaranteed, they cannot be relied upon for any purpose and they do not form part of any agreement. No liability is taken for any error, omission or misstatement. A party must rely upon its own inspection(s). Powered by www.propertybox.io



Please note the marker reflects the postcode not the actual property

check out more properties at williamhbrown.co.uk



Property Ref:
KLN118587 - 0002

1. MONEY LAUNDERING REGULATIONS Intending purchasers will be asked to produce identification documentation at a later stage and we would ask for your co-operation in order that there is no delay in agreeing the sale. 2. These particulars do not constitute part or all of an offer or contract. 3. The measurements indicated are supplied for guidance only and as such must be considered incorrect. Potential buyers are advised to recheck measurements before committing to any expense. 4. We have not tested any apparatus, equipment, fixtures or services and it is in the buyers interest to check the working condition of any appliances. 5. Where an EPC, or a Home Report (Scotland only) is held for this property, it is available for inspection at the branch by appointment. If you require a printed version of a Home Report, you will need to pay a reasonable production charge reflecting printing and other costs. 6. We are not able to offer an opinion either written or verbal on the content of these reports and this must be obtained from your legal representative. 7. Whilst we take care in preparing these reports, a buyer should ensure that his/her legal representative confirms as soon as possible all matters relating to title including the extent and boundaries of the property and other important matters before exchange of contracts.

William H Brown is a trading name of Sequence (UK) Limited which is registered in England and Wales under company number 4268443, Registered Office is Cumbria House, 16-20 Hockliffe Street, Leighton Buzzard, Bedfordshire, LU7 1GN. VAT Registration Number is 500 2481 05.



01553 771337



KingsLynn@williamhbrown.co.uk



40-42 King Street, KING'S LYNN, Norfolk, PE30 1ES



williamhbrown.co.uk