

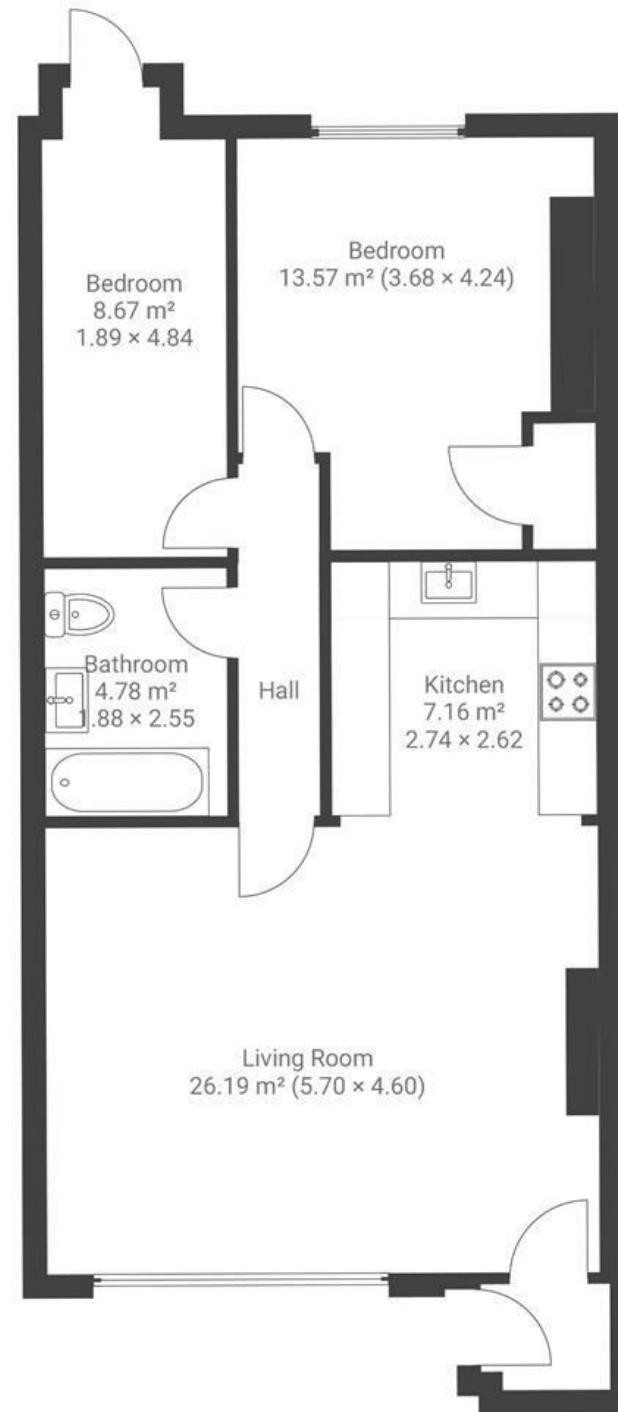
Pro-Cathedral Lane

CLIFTON

APPROXIMATE FLOOR AREA
69 SQM / 742 SQFT



GROUND FLOOR



Boardwalk

Pro-Cathedral , BRISTOL



£350,000



2 Bedrooms



BS8 1LB



1 Bathrooms

"A perfect Saturday sums it up best. We'd spend the day out and about: popping to the Lido or walking up to Clifton Village, and then head home for a quiet evening. After putting our little one to bed, we'd sit outside in the walled garden with a glass of wine. Having that secure, incredibly peaceful outdoor space right there meant we could fully unwind and enjoy a beautiful summer evening, completely in our own sanctuary."

