



Hampstead Gardens, NW11
£1,250,000

Dexters



Hampstead Gardens, NW11

A beautifully refurbished five bedroom end-of-terrace family home offering approximately 1,900 sq ft of accommodation arranged over three floors. The property features a reception room and a superb open plan kitchen/dining/family room, ideal for modern living. Further benefits include a principal bedroom with en suite, four additional bedrooms, and a rear garden with patio.

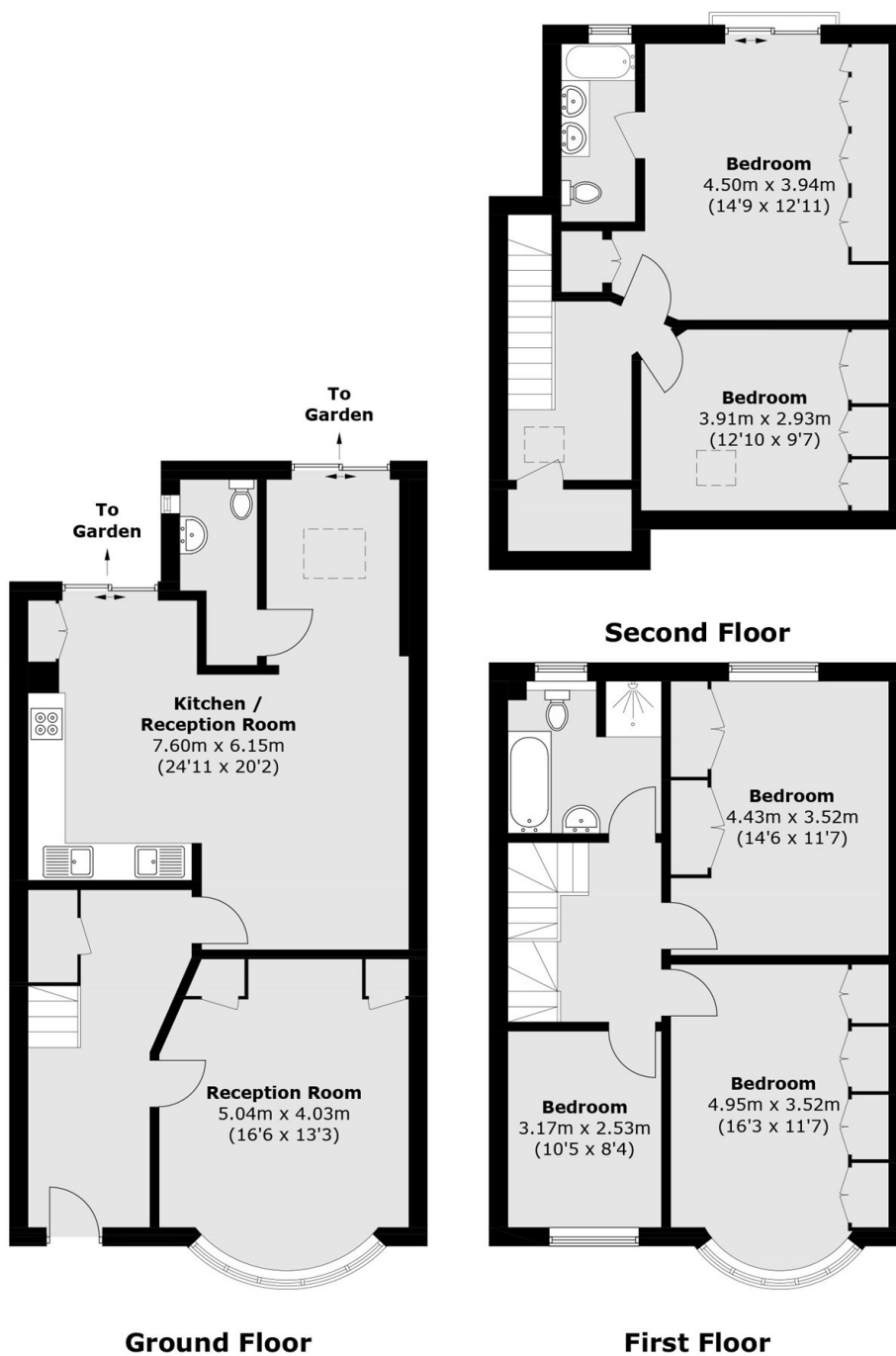
Situated in the heart of Temple Fortune, the property is moments from a wide selection of shops, cafés, and restaurants. The Heath Extension is within easy reach, providing excellent green open space. Strong transport links are available via Golders Green underground station (Northern line) and multiple bus routes.

Features

- Five Bedrooms
- Approximately 1900 Sq.Ft
- End of Terrace
- Freehold
- Private Garden
- Two Bathrooms



Hampstead Gardens, London, NW11



Total area (approx.): 172.7 sq. m (1,858.9 sq. ft)

Dexters

Hampstead
56 Heath Street
London
NW3 1DL
Sales
020 7433 0273

Energy Rating: D. We aim to make our particulars both accurate and reliable. However they are not guaranteed; nor do they form part of an offer or contract. If you require clarification on any points then please contact us, especially if you're traveling some distance to view. Please note that appliances and heating systems have not been tested and therefore no warranties can be given as to their good working order.

 **RICS** | Regulated
Estate Agent
and Letting Agent

[dexters.co.uk](https://www.dexters.co.uk)