

oakheart



£1,950 Per Month

Per Month

Remus Close, Colchester

Located in the popular Highwoods area, within a quiet cul-de-sac, this modern four-bedroom bungalow offers spacious and versatile accommodation throughout.

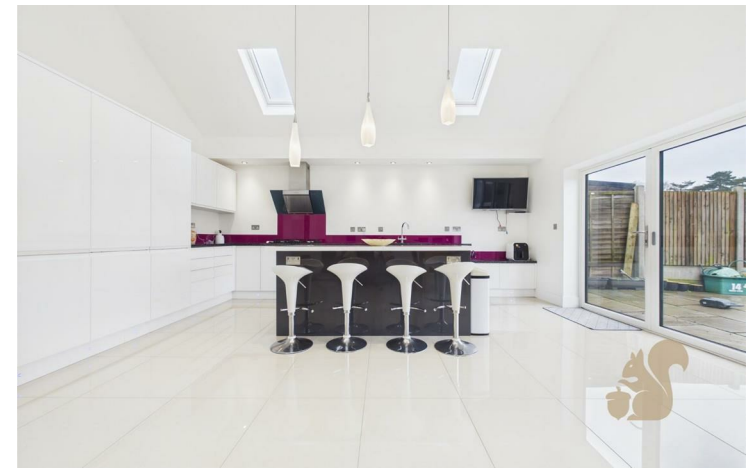
The property has been finished to a contemporary standard and benefits from a rear extension, creating a generous living space ideal for families or those looking for single-storey living. There is a modern fitted kitchen, four

well-proportioned bedrooms, and two bathrooms, all presented in good decorative order.

Externally, the property offers off-road parking for up to three vehicles and a large rear garden, perfect for outdoor entertaining or relaxing.

An excellent opportunity to secure a modern bungalow in a

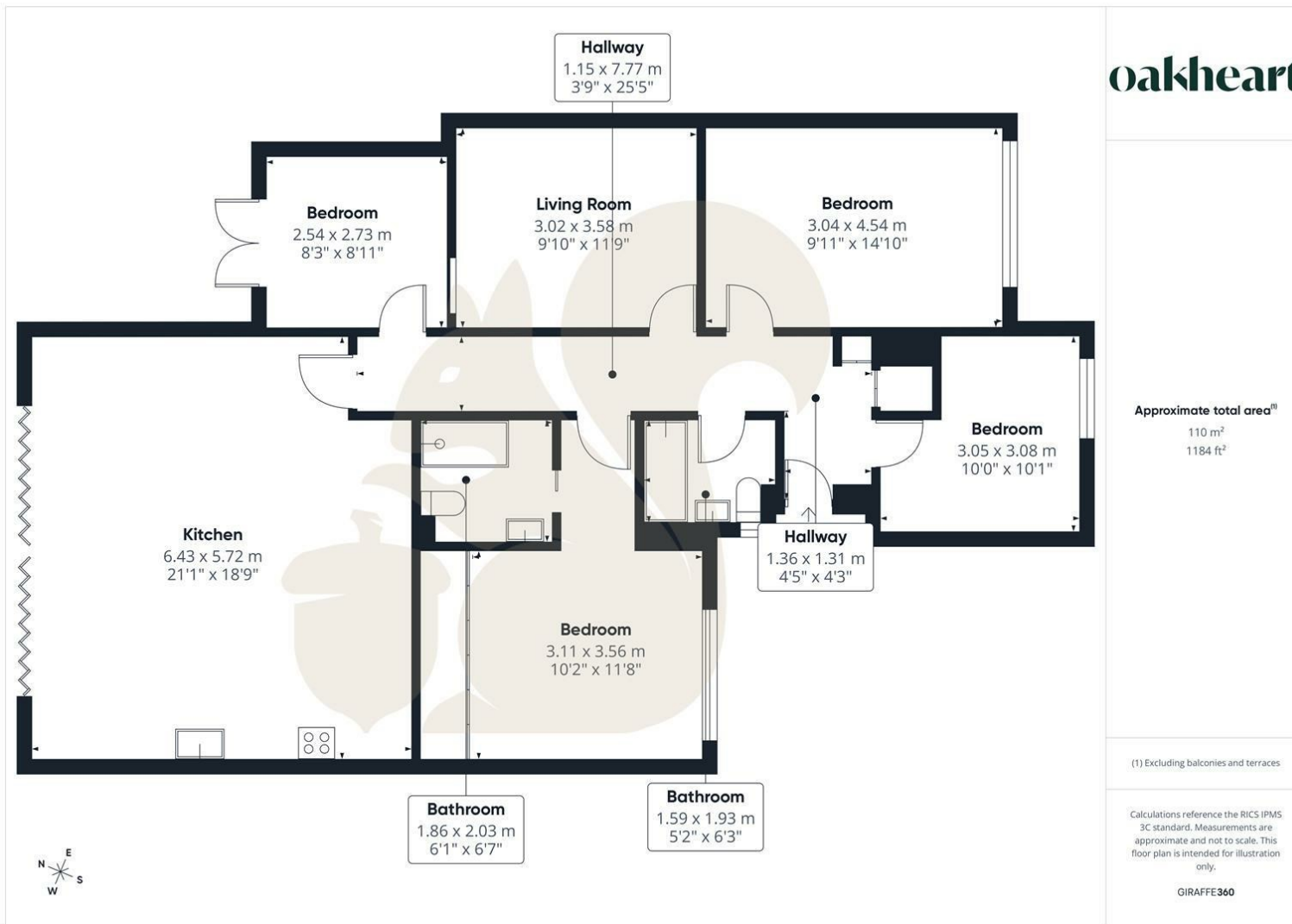
peaceful and sought-after residential location, close to local amenities and transport links.











Local Authority:


Colchester

Tenure:

Council Tax Band:

C

Energy Efficiency Rating

	Current	Potential
<i>Very energy efficient - lower running costs</i>		
(92 plus) A		
(81-91) B		
(69-80) C	72	76
(55-68) D		
(39-54) E		
(21-38) F		
(1-20) G		
<i>Not energy efficient - higher running costs</i>		
England & Wales	EU Directive 2002/91/EC 	

Agents Note: Whilst every care has been taken to prepare these particulars, they are for guidance purposes only. All measurements are approximate and are for general guidance purposes only and whilst every care has been taken to ensure their accuracy, they should not be relied upon.

Oakheart Colchester - Lettings
01206 803 308
colchesterlettings@oakheart.co.uk
2b Cotman Road, Colchester, Essex, CO3 4QJ

oakheart