



22 Bedhampton Road, Portsmouth

Offers in Region of £220,000





22 Bedhampton Road

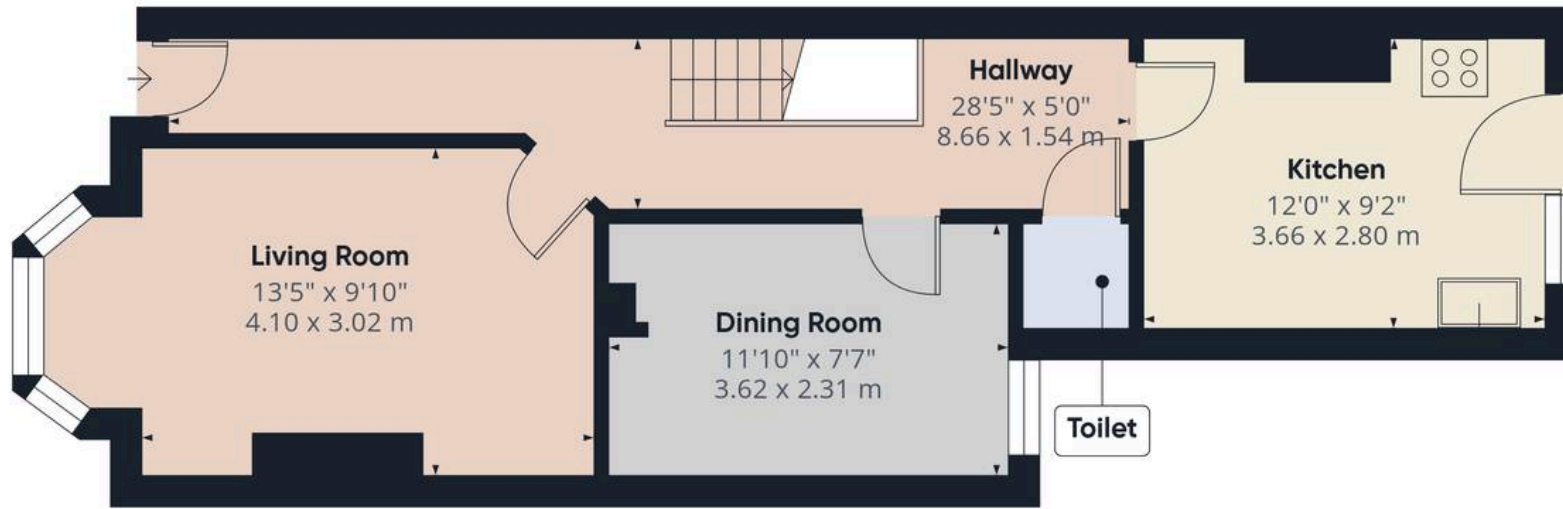
Portsmouth

This spacious three-bedroom terraced house offers an excellent opportunity for buyers looking to put their own stamp on a property in a central and convenient location. With generous proportions and a practical layout, the home provides a solid base for improvement while already offering comfortable living space. The living area is ideal for both relaxing and entertaining, while the kitchen is well-sized, in good condition, and offers ample storage and worktop space, with potential for future enhancement.

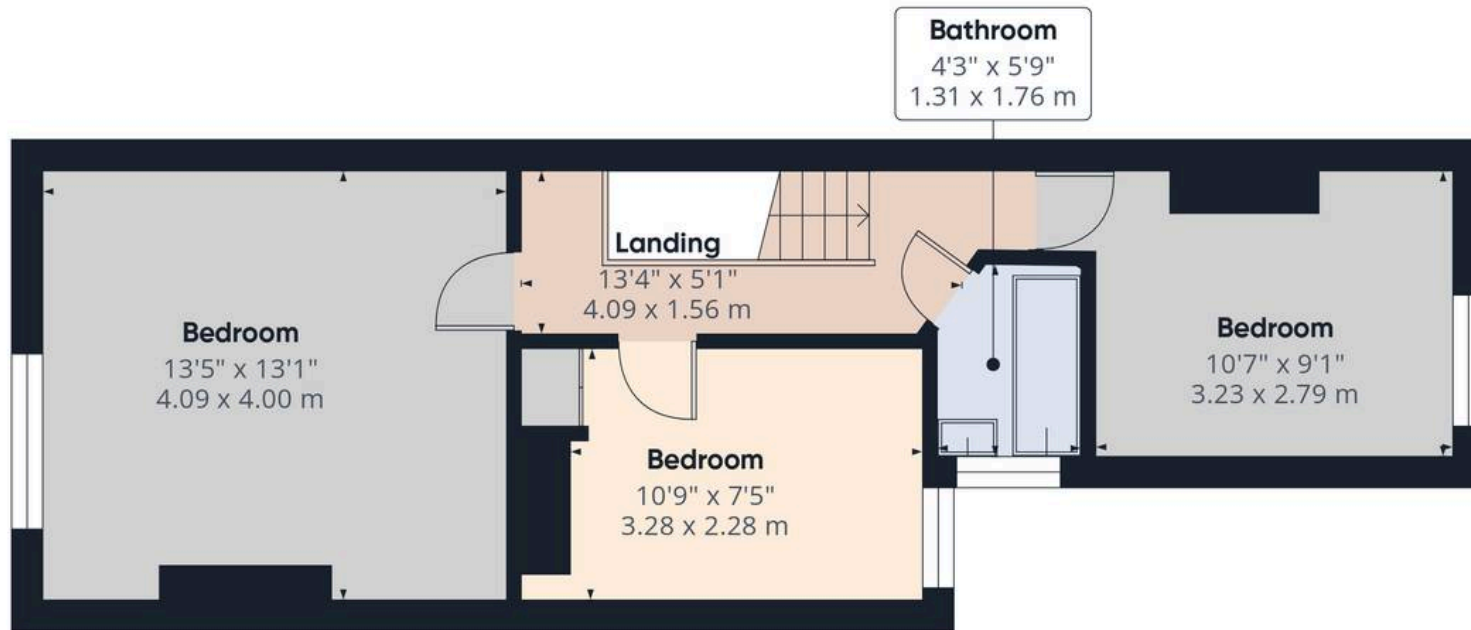
Upstairs, three well-proportioned bedrooms provide flexibility for family living, guests, or home working. The bathroom is functional and ready for updating, giving scope to personalise. Outside, the low-maintenance courtyard garden provides useful outdoor space. Ideally located close to shops, schools and transport links, this property will appeal to first-time buyers, families and investors seeking a home with great potential.

Material Information • Tenure: Freehold • Council Tax: Band C • Electricity: Mains Supply • Heating: Gas • Water Supply: Mains Supply • Sewage: Mains Supply • Broadband: Standard, Superfast and Ultrafast Fibre are all available in this area • Parking: On Street • Mobile: Ofcom official website checker states that EE, Vodafone, O2 and Three available in the area • Flood Risk: Low Risk





Ground Floor



Bedroom

Floor 1

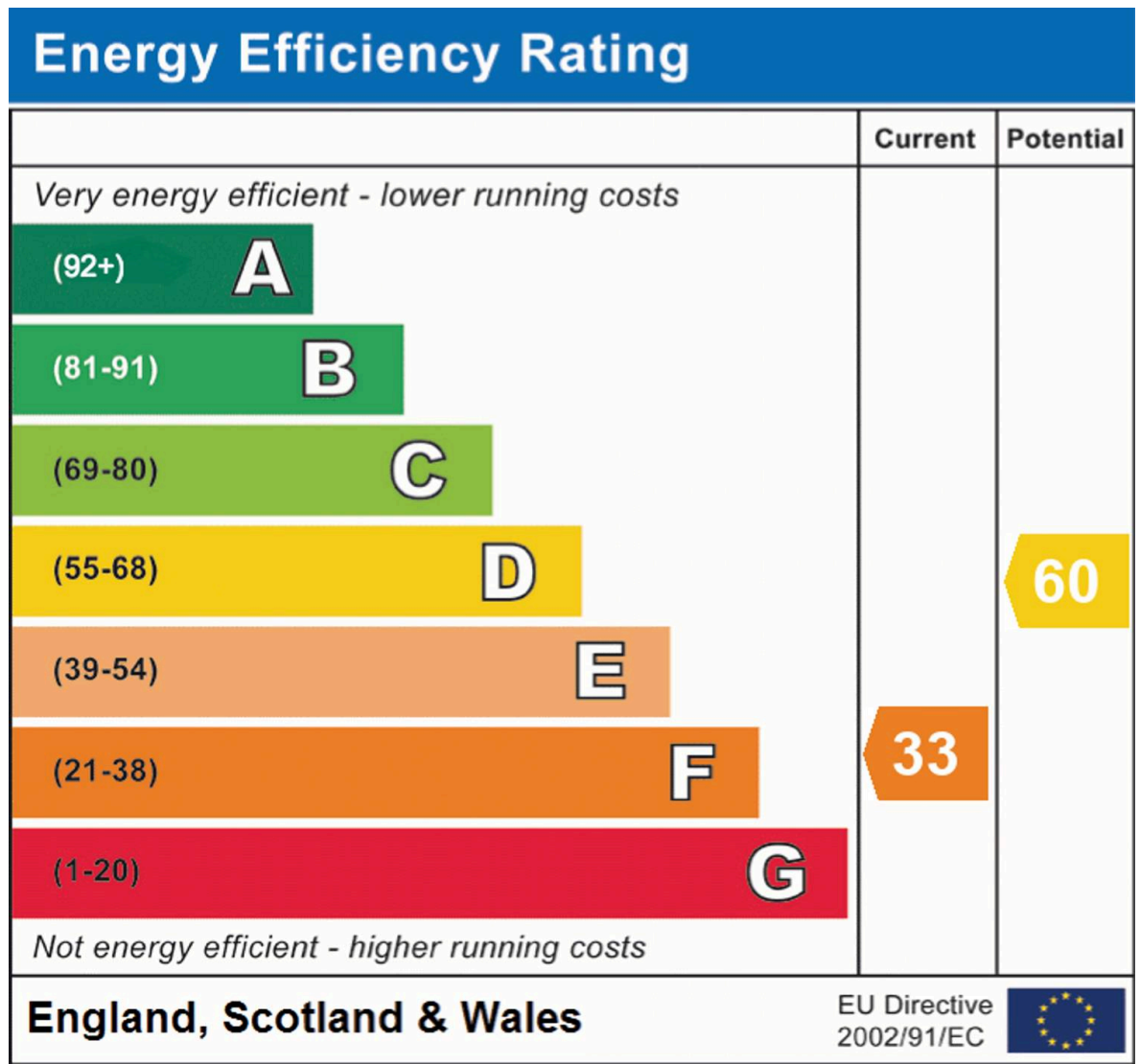
Approximate total area⁽¹⁾
901 ft²
83.7 m²

(1) Excluding balconies and terraces

Calculations reference the RICS IPMS 3C standard. Measurements are approximate and not to scale. This floor plan is intended for illustration only.

GIRAFFE360





Chinneck Shaw

Bridge House, Milton Road, Portsmouth – PO3 6AN

023 9282 6731

hello@chinneckshaw.co.uk

www.chinneckshaw.co.uk/

Chinneck Shaw, Bridge House, Milton Road, PO3 6AN Consumer Protection from Unfair Trading Regulations 2008: These details are for guidance only and complete accuracy cannot be guaranteed. If there is any point which is of particular importance, verification should be obtained. They do not constitute a contract or part of a contract. All measurements are approximate. No guarantee can be given with regard to planning permissions or fitness for purpose. No apparatus, equipment, fixture or fitting has been tested. Items shown in the photographs are NOT necessarily included. Interested Parties are advised to check availability and make an appointment to view before travelling to see a property.