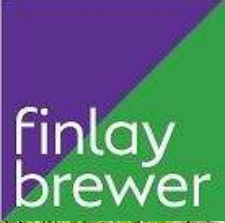




Paddenswick Road W6



Paddenswick Road W6

- 3 BEDROOMS**
- 2 RECEPTIONS**
- KITCHEN / BREAKFAST ROOM**
- BATHROOM & SHOWER ROOM**
- PAVED & LAWNED GARDEN**
- OFF-STREET PARKING**
- POTENTIAL TO EXTEND STPP**
- EPC RATING: D 60**
- COUNCIL TAX BAND: G**

An extra wide end terrace Victorian cottage with off street parking and a deep garden which offers wonderful potential to both renovate and extend (STPP). The property's entrance is to the side and opens into a spacious hall with stairs running up the middle of the house. The elegant living room spans the width of the front of the property and has two curved sash windows with wood shutters which flood the room with light. The second reception room is behind the living room and beyond is the kitchen/breakfast room which leads to the garden, which is mostly lawned and has side access. There is also a shower room on the ground floor and good under stair storage. There are 3 bedrooms and the family bathroom on the first floor including the wide principal bedroom. As well as off street parking the property benefits from a mature front garden. Paddenswick Road is immediately opposite the open green family spaces of Ravenscourt Park providing sporting activities, cafes and a garden centre, as well as the amenities of Brackenbury Village. This property of approximately 1,153 sq ft is near excellent state and private schools as well as the transport hubs of Ravenscourt Park (district line), Hammersmith and Shepherd's Bush and the retail, restaurant and leisure facilities of Westfield London and the eagerly anticipated Hammersmith Civic Centre.

PRICE GUIDE £1,150,000
FREEHOLD

SUBJECT TO CONTRACT



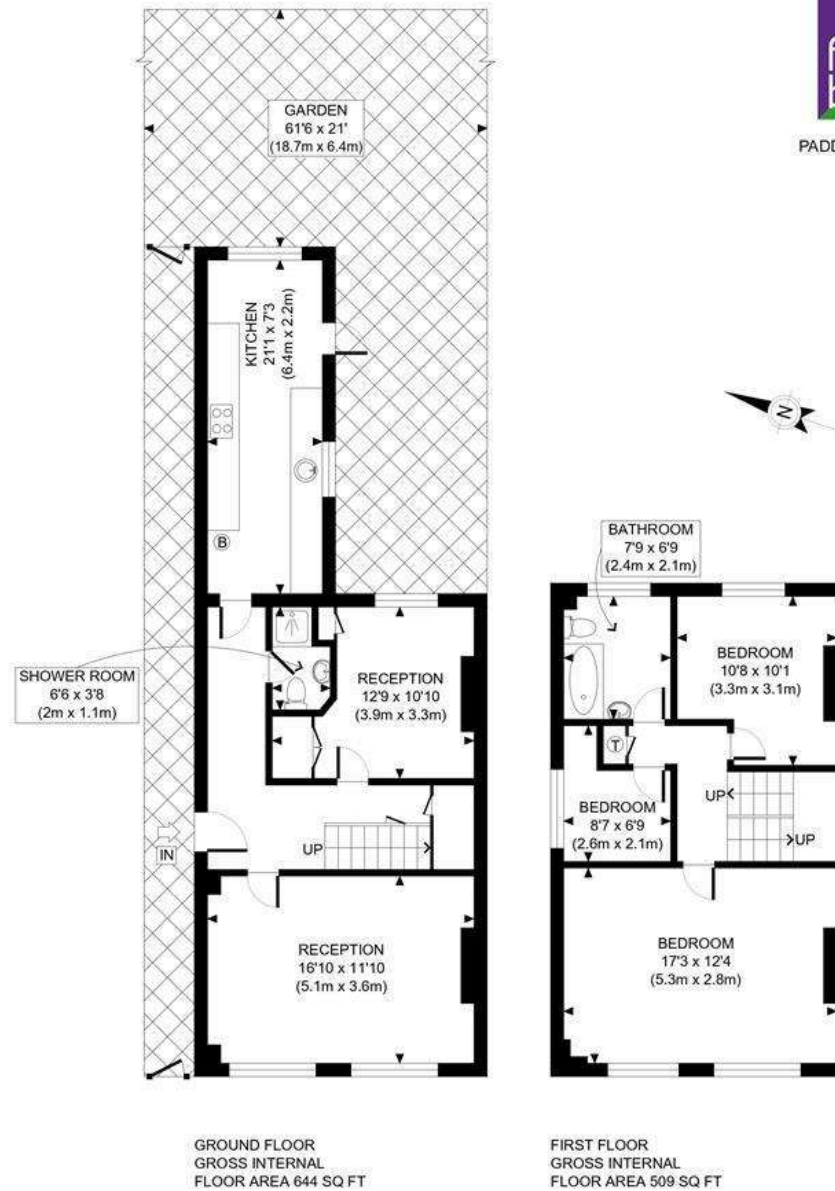








PADDENSWICK ROAD, W6



APPROX. GROSS INTERNAL FLOOR AREA: 1153 SQ FT/ 107 SQM