



Tollard House

388 Kensington High Street, W14

£3,500 per month
(£807.69 per week)

A two double bedroom, two bathroom apartment situated on the 4th floor (with lift) of this well-run modern development just set off High Street Kensington, benefiting from a private balcony and underground parking space.

CHESTERTONS



Tollard House

388 Kensington High Street, W14

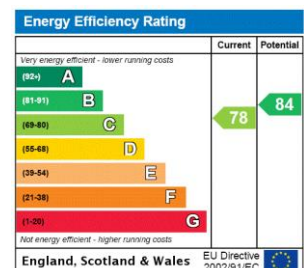
- A modern two bedroom apartment on the 4th floor with lift and porter
- Lovely bright and spacious reception and dining room with balcony
- Separate fully fitted kitchen, Two bathrooms and one en-suite
- Underground allocated parking space, situated close to Kensington Olympia



A two double bedroom, two bathroom apartment situated on the 4th floor (with lift) of this well-run modern development that also benefits from an underground parking space.

The Property is offered unfurnished and comprises a spacious reception and dining room with a balcony and wood flooring. There is a master bedroom with en-suite bathroom, a second double bedroom ideal for guest room and a guest bathroom. Located next to Kensington Olympia station and close to the amenities of Kensington High street.

Minimum Term: months
Deposit Required: £4,038.46
Local Authority:
Council Tax Band:
EPC Rating: C
Unfurnished



Chestertons Kensington Lettings

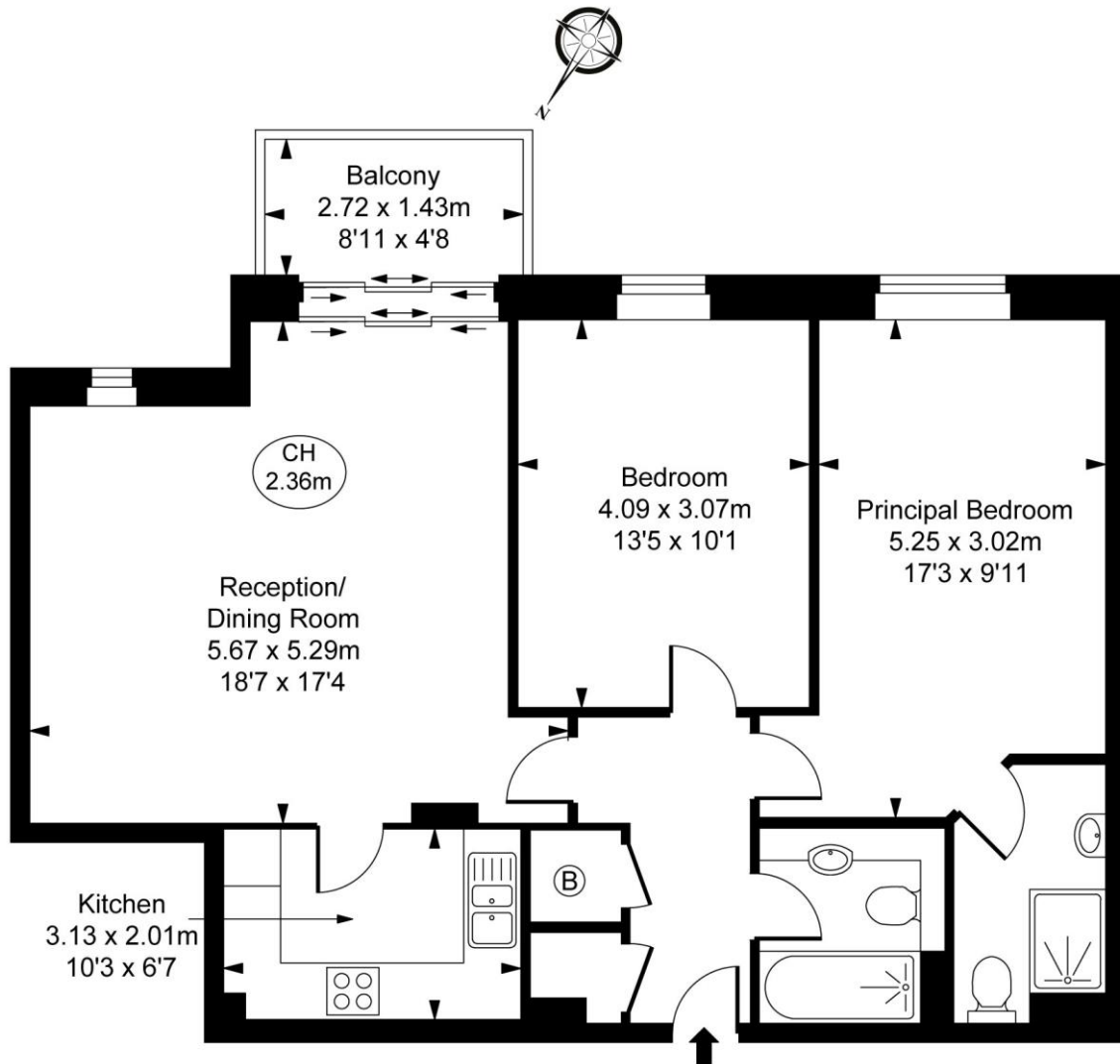
116 Kensington High Street
 Kensington
 London
 W8 7RW
 kensingtonlettingsusers@chestertons.co.uk
 02079377260
 chestertons.co.uk

Additional tenant charges apply (fees apply to non-AST tenancies only)
 Tenancy Agreement Fee: £300
 References per Tenant/Guarantor: £60
 Inventory check (approx. £100 – £250 inc. VAT)
 chestertons.co.uk/property-to-rent/applicable-fees

Tollard House, Kensington High Street, W14

Approximate Gross Internal Area
77.57 sq m / 835 sq ft

(CH = Ceiling Heights)



Fourth Floor

This plan is not to scale. It is for guidance and not for valuation purposes.
All measurements and areas are approximate only, and have been prepared in accordance with the current edition of the RICS Code of Measuring Practice.
© Fulham Performance