



Beaumont Rise
Marlow

www.bb-estateagents.co.uk



bonners & babingtons



A generous detached Victorian-style home offering contemporary interiors, secure gated parking, and a private courtyard garden, superbly located between Marlow High Street and the station.

Beaumont Rise, Marlow, Buckinghamshire, SL7 1EF

Guide Price £2,350,000

- DETACHED VICTORIAN TOWN HOUSE
- FOUR / FIVE BEDROOMS
- THREE BATHROOMS & CLOAKROOM
- EXTENSIVE KITCHEN / DINER
- PRIVATE COURTYARD GARDEN
- SECURE GATED PARKING
- DOUBLE CARPORT
- NO ONWARD CHAIN
- SHORT STROLL TO MARLOW HIGH STREET
- EASY ACCESS TO MARLOW STATION



Anglers Court, Spittal Street, Marlow, Buckinghamshire, SL7 3HJ

01628 333800

marlow@bb-estateagents.co.uk



Marlow

Marlow town centre is a thriving and stylish riverside community with a comprehensive range of shops and excellent pubs and restaurants. Nearby Marlow Station has a regular train service to London Paddington via Maidenhead (from 44 mins) with links to the City of London, via the Elizabeth Line. Access to the M4 and M40 is via the A404(M) and London Heathrow is approximately 22 miles away. There is a wide range of educational and recreational facilities in the area.

Excellent local schools are numerous and include Sir William Borlase in Marlow.



Description

A substantial detached Victorian town house offering flexible 4-5 bedroom accommodation arranged over generous proportions. The property blends period character with modern living, featuring an extensive kitchen/diner ideal for both family life and entertaining.

Accommodation includes three well-appointed bathrooms in addition to a ground floor cloakroom. Outside, the home benefits from a private courtyard garden providing a secluded outdoor space.

Further advantages include secure gated parking with a double carport. Offered to the market with no onward chain, the property is ideally positioned within a short stroll of Marlow High Street and enjoys easy access to Marlow Station, making it perfectly suited for commuters and town living alike.





General Remarks and Stipulations

Tenure
Freehold

Post Code
SL7 1EF

Services

Viewing
Strictly by appointment with
Bonners & Babingtons

EPC Rating
73

Fixtures and Fittings
TBC

Local Authority
Bucks County Council

Important Notice

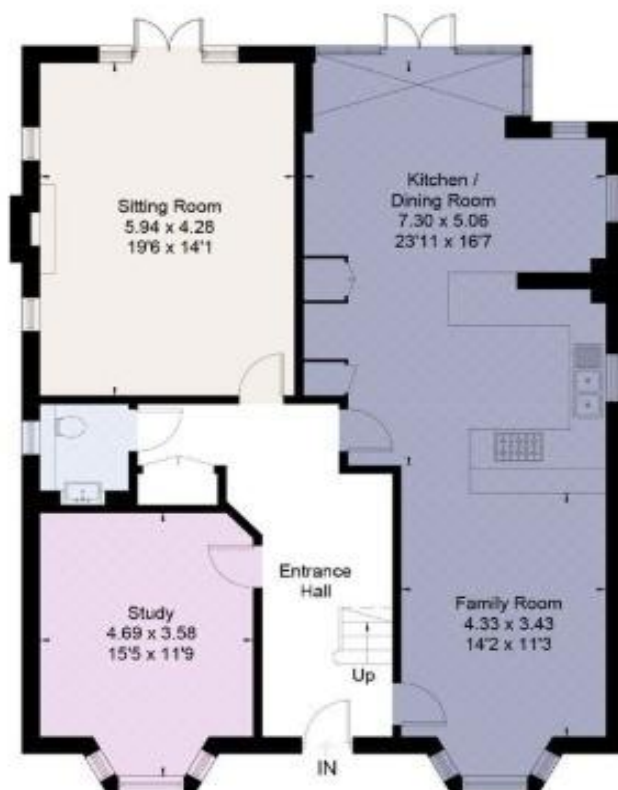
Bonners & Babingtons, their clients and any joint agents give notice that:

1. They are not authorised to make or give any representations or warranties in relation to the property either here or elsewhere, either on their own behalf or on behalf of their client or otherwise. They assume no responsibility for any statement that may be made in these particulars. These particulars do not form part of any offer or contract and must not be relied upon as statements or representations of fact.

2. Any areas, measurements or distances are approximate. The text, photographs and plans are for guidance only and are not necessarily comprehensive. It should not be assumed that the property has all necessary planning, building regulation or other consents and Bonners & Babingtons have not tested any services, equipment or facilities. Purchasers must satisfy themselves by inspection or otherwise.



Approximate Floor Area = 275.4 sq m / 2964 sq ft (Excluding Carport)

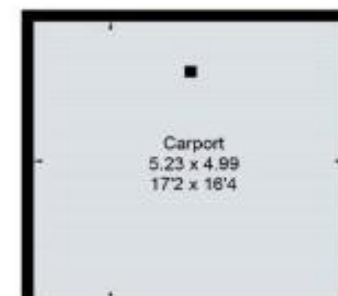


Ground Floor

Reduced head height below 1.5m



First Floor



(Not Shown In Actual Location / Orientation)



Second Floor

