

Pinn Way

Ruislip • • HA4 7QG

PCM: £3,000 PCM



coopers
est 1986



A spacious and well-presented four-bedroom family home located on the popular Pinn Way, Ruislip.

This generously proportioned property offers versatile accommodation arranged over two floors and is ideal for families seeking space, comfort, and convenience.

The ground floor comprises a large and bright lounge with ample space for relaxing and entertaining, a separate dining room, and an additional reception room which could be used as a home office or snug. The modern fitted kitchen provides good storage and worktop space, with room for essential appliances. A convenient downstairs W.C. and welcoming entrance hallway complete the ground floor.

Upstairs, the property offers four well-sized bedrooms, including a spacious main bedroom. The first floor also benefits from a shower room and a separate W.C. .

Detached Property

Four Bedrooms

Downstairs WC

Large Garage

High Regarded Local Schools Nearby

Close To Ruislip & Ruislip Manor High Streets

Metropolitan & Piccadilly Lines Close By

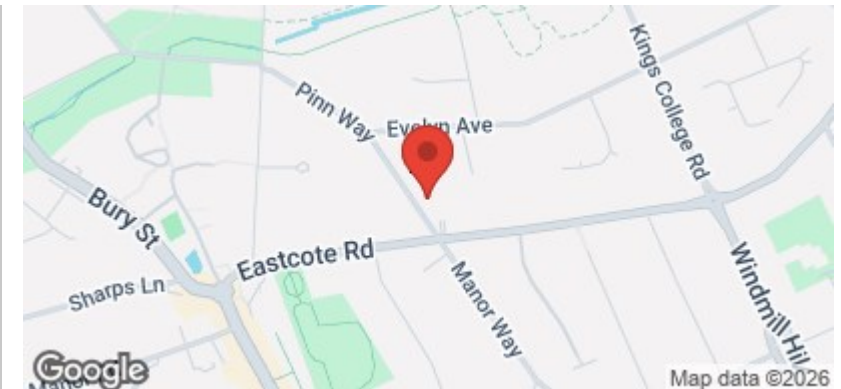
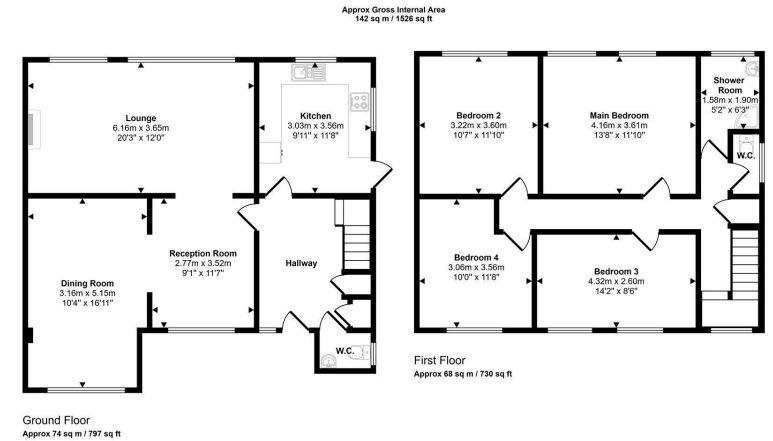
Large Driveway For Multiple Cars

1526 Sqft

Council Tax Band G

Available Date

31st March 2026



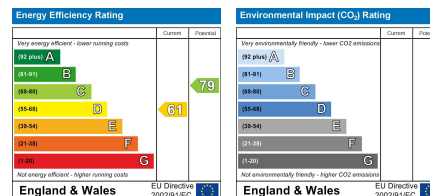
coopers
est 1986

01895 625 625

126-128 High Street, Ruislip,
Middlesex, HA4 8LL

rl@coopersresidential.co.uk

CoopersResidential.co.uk



Important Notice: These particulars, whilst believed to be accurate are set out as a general outline only for guidance and do not constitute any part of an offer or contract. Intending purchasers should not rely on them as statements or representation of fact, but must satisfy themselves by inspection or otherwise has the authority to make or give any representation or warranty in respect of the property.