

Franklyn James



350 The Highway

, London, E1W 3HU

Guide Price **£325,000**

GUIDE PRICE - £325,000 - £350,000

Located within a charming listed building on the banks of the River Thames, this unique one bedroom apartment offers a perfect blend of character and contemporary living. The property is set in a secure, gated development, providing both privacy and tranquility, with scenic views of the river.

The vibrant local area offers an array of popular pubs, restaurants, and cafes along Narrow Street and in nearby Wapping, while Canary Wharf, just a short distance away, provides a wide range of shops, leisure activities, and excellent transport links.

Inside, the apartment features a spacious open-plan kitchen/lounge, ideal for modern living and entertaining. This property boasts a modern bathroom, and ample storage throughout, the property offers both comfort and practicality.

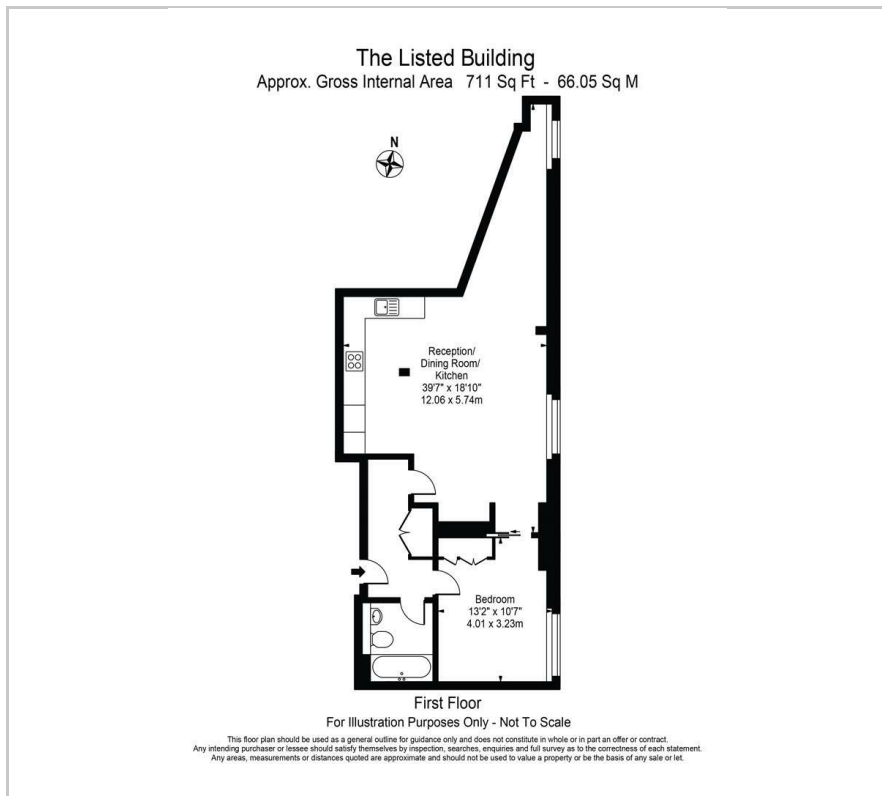
Viewing

Please contact our Limehouse Sales Office on 02077911777 if you wish to arrange a viewing appointment for this property or require further information.

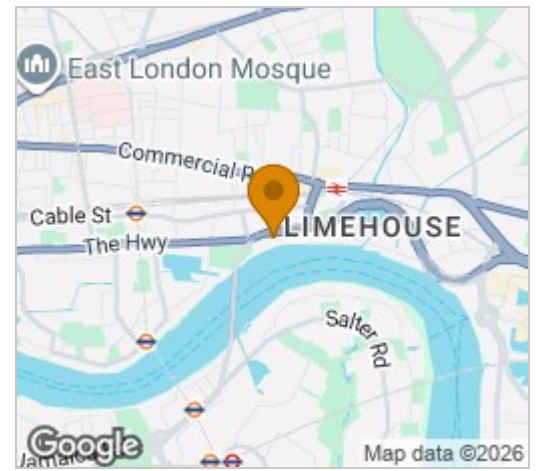
- Lond lease
- Swimming Pool and concierge
- Allocated parking
- Popular riverside gated development
- Character apartment
- Close to Canary Wharf



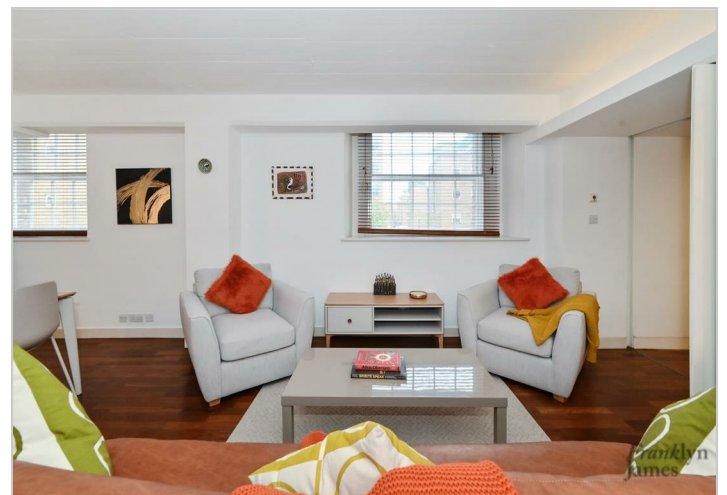
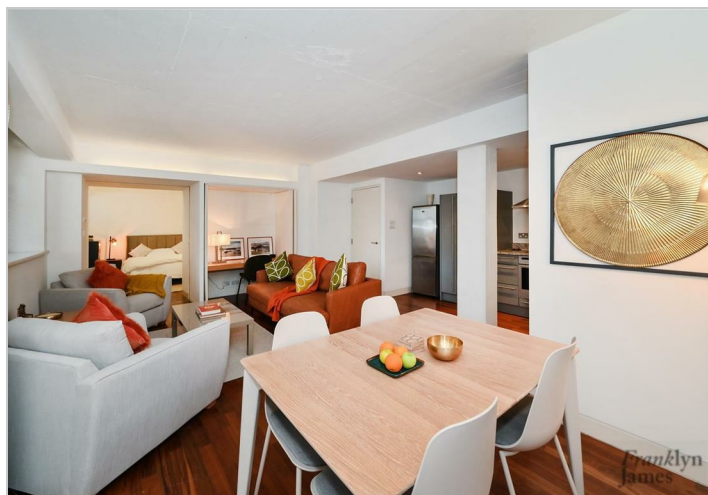
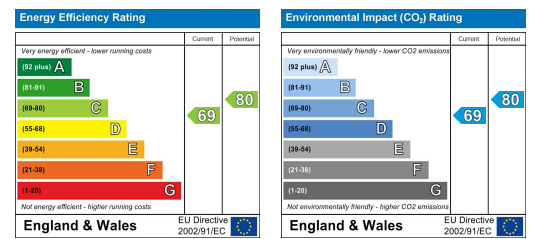
Floor Plan



Area Map



Energy Efficiency Graph



These particulars, whilst believed to be accurate are set out as a general outline only for guidance and do not constitute any part of an offer or contract. Intending purchasers should not rely on them as statements of representation of fact, but must satisfy themselves by inspection or otherwise as to their accuracy. No person in this firm's employment has the authority to make or give any representation or warranty in respect of the property.