



Sunningdale Drive

Salford



In Excess of £260,000

Sunningdale Drive

Salford

Extended, three bedroom semi-detached property coming to the market CHAIN FREE! Benefitting from breathtaking views of Duncan Matheson Playing Fields to the rear.

Council Tax band: C

Tenure: Freehold

- Extended, three bedroom semi-detached property coming to the market CHAIN FREE!
- Backing onto Duncan Matheson Playing Fields
- Large, Bay-Fronted Lounge and Dining Room
- Spacious fitted kitchen
- Three generous sized bedrooms
- Three-piece bathroom suite
- Driveway to the Front for Off-Road Parking
- Generously-sized low maintenance garden to the rear
- Close to Excellent Transport Links into Salford Quays, Media City and Manchester City Centre
- Perfect first time buy or family home!



Entrance Hallway

7' 4" x 8' 0" (2.24m x 2.45m)

Lounge

20' 4" x 11' 0" (6.20m x 3.36m)

Dining Room

8' 11" x 10' 1" (2.72m x 3.08m)

Kitchen

9' 0" x 20' 8" (2.74m x 6.31m)

Landing

Bedroom One

11' 9" x 11' 0" (3.58m x 3.35m)

Bedroom Two

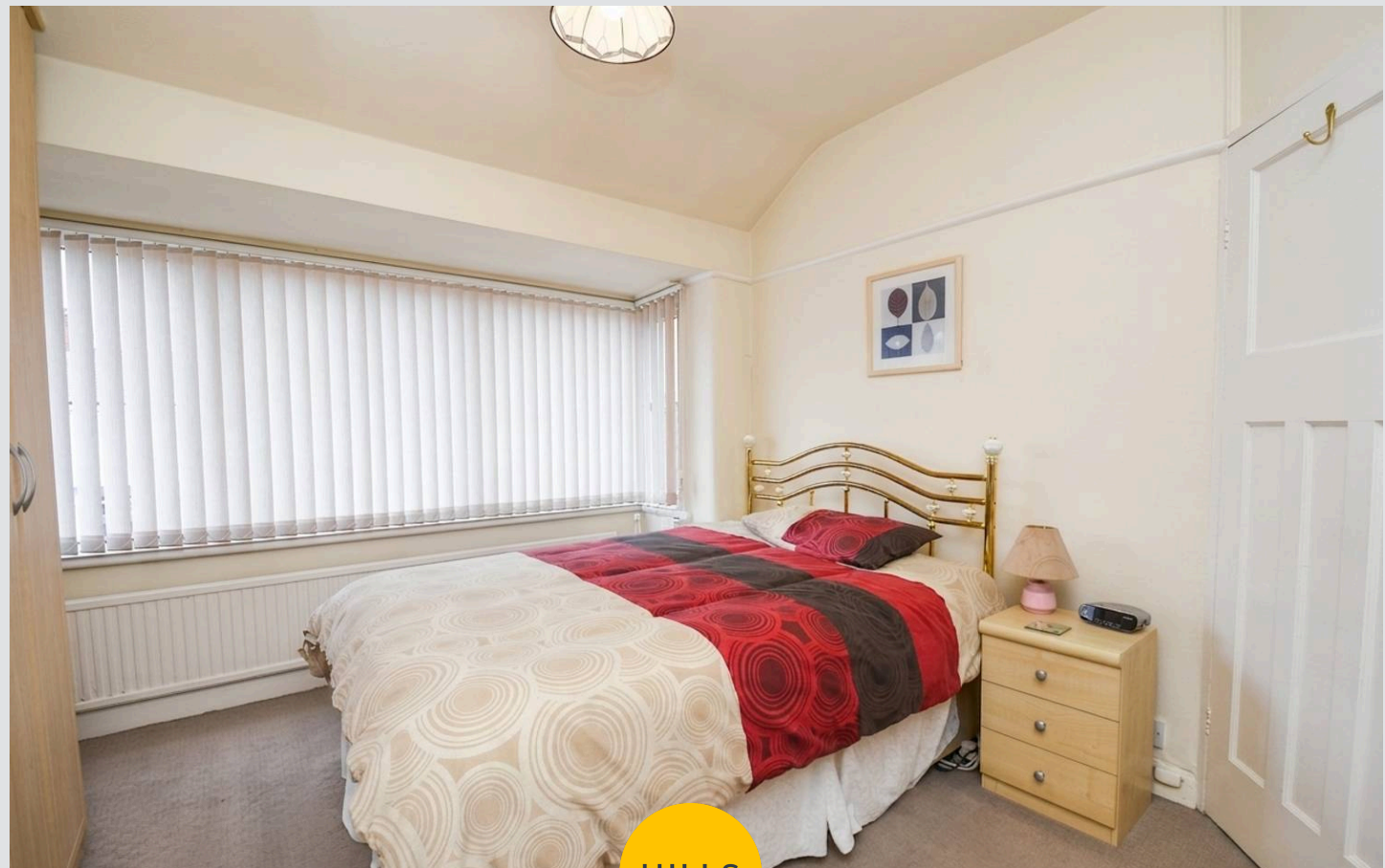
10' 10" x 8' 6" (3.30m x 2.59m)

Bedroom Three

7' 9" x 8' 6" (2.37m x 2.58m)

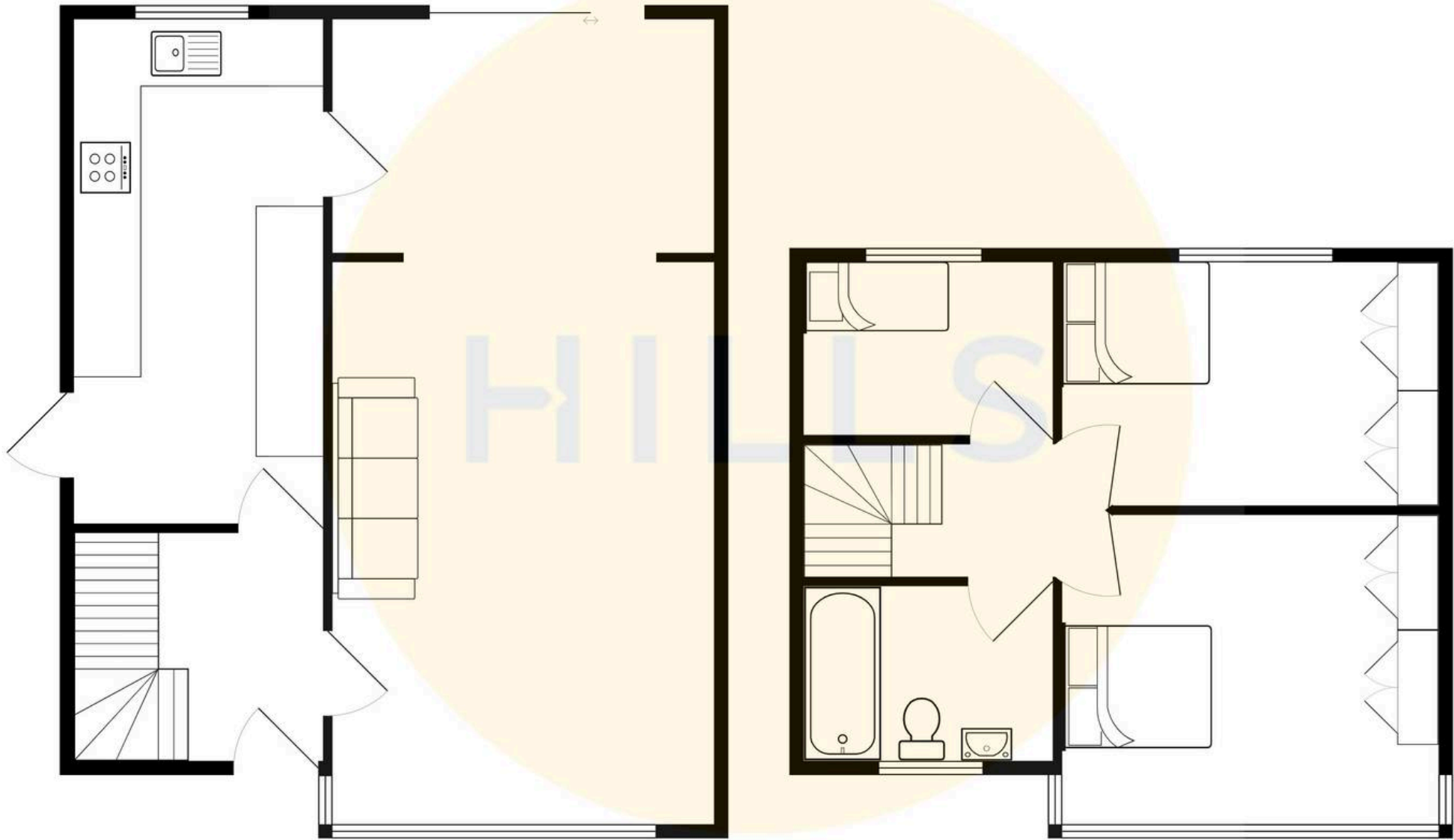
Bathroom

6' 10" x 7' 9" (2.08m x 2.35m)



HILLS







HILLS

Hills | Salfords Estate Agent

Hills Residential, Sentinel House Albert Street - M30 0SS

0161 707 4900

sales@hills.agency

www.hills.agency/



By law, we are required to conduct anti-money laundering checks on all potential buyers and sellers. In line with HMRC guidelines, our trusted partner, Coadjute, will securely manage these checks on our behalf. A non-refundable fee of £45 + VAT per person will apply, and Coadjute will handle the payment. Once an offer is accepted, Coadjute will send a secure link for you to complete the biometric checks. These checks must be completed before we can send the memorandum of sale to all parties. PLEASE NOTE: The Agent has not tested any equipment, fixtures, fittings or services so cannot verify that they are in working order or fit for the purpose. References to the properties tenure are based on information supplied by the seller. You are advised to check the availability of this property before travelling any distance to view. Every effort has been made to ensure these particulars are correct and not misleading but their accuracy is not guaranteed nor do they form part of any contract.