



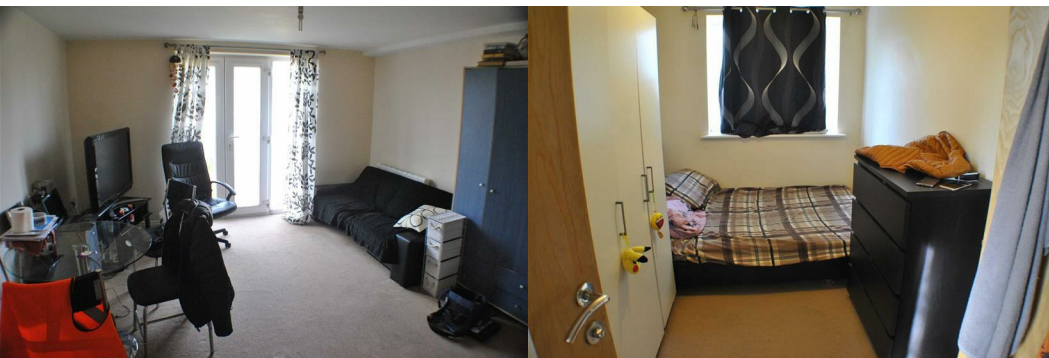
6 Machin Road

, Henbury, BS10 7FH

£850



PLEASE READ DO NOT PHONE If you are interested in viewing this property please send us an alert through Rightmove / Zoopla using the Email Agent/request details option on their site. We will then respond with a brief questionnaire. On receipt, we will then contact you. VIEWINGS WEDNESDAY THE 1ST JULY 12.00pm Noon Till 1PM *** Purpose Built First Floor Flat*** Accommodation Comprising Entrance Hallway,, Lounge Kitchenette, One Double Bedroom And En Suite Shower Room, Communal Garden, Bike Storage, No Smokers.



Hallway

Entrance door, cupboard, door to:-

Lounge/Diner 12'3" x 11'3" (3.74 x 3.44)

Double glazed french doors, wall heater, opening to:-

Kitchen 7'0" x 3'10" (2.14 x 1.17)

Matching range of wall and base units with worktop space over, sink unit, space for washing machine, space for fridge, built in cooker

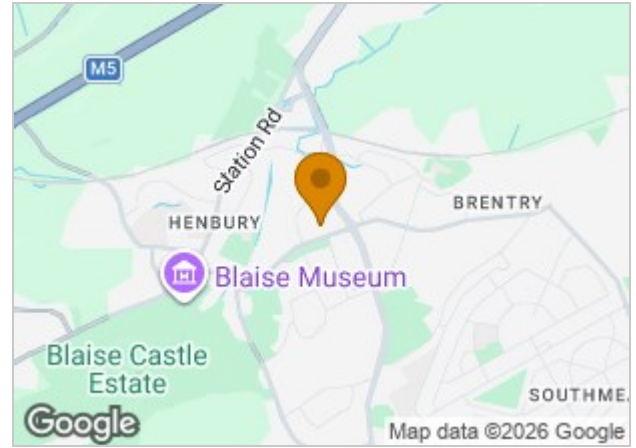
Bedroom 12'4" x 7'4" (3.77 x 2.24)

Double glazed window, wall heater, door to:-

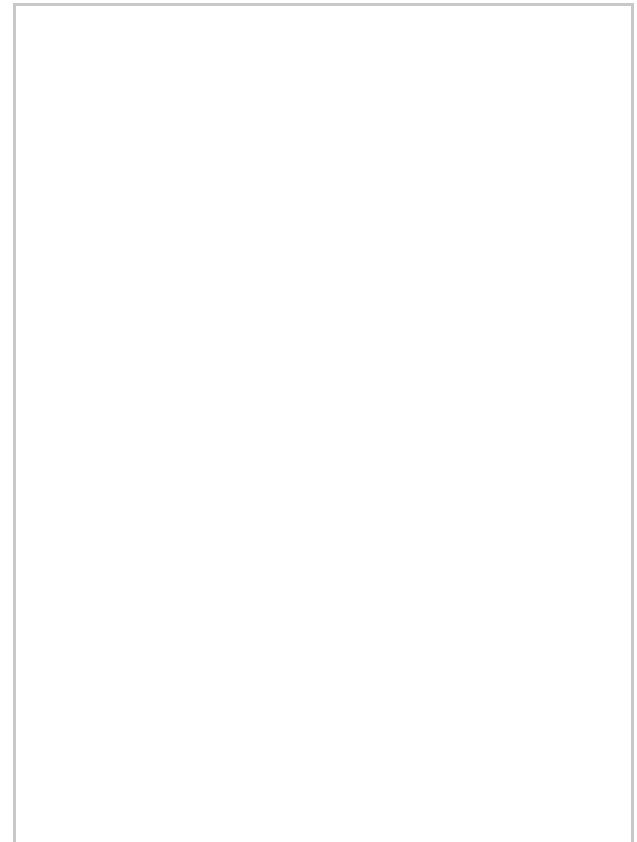
En-suite Shower Room

3 piece suite comprising of shower cubical, low level wc, wash hand basin, double glazed window

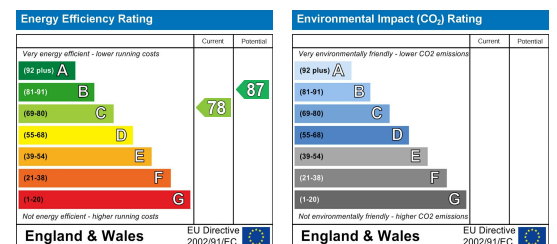
Area Map



Floor Plans



Energy Efficiency Graph



These particulars, whilst believed to be accurate are set out as a general outline only for guidance and do not constitute any part of an offer or contract. Intending purchasers should not rely on them as statements of representation of fact, but must satisfy themselves by inspection or otherwise as to their accuracy. No person in this firm's employment has the authority to make or give any representation or warranty in respect of the property.

31 High Street, Kingswood, Bristol, BS15 4AA

Tel: 0117 967 9102 Email: oakestateagents@googlemail.com <https://www.estateagentskingswood.co.uk>