

## 2 Goodwin Drive,

Offers Over £600,000

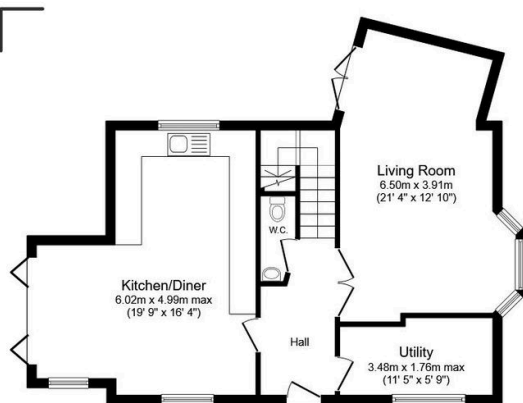
5 2 2



This beautifully presented, move in ready five bedroom family home is just five years old and forms part of a highly desirable modern development in Arlesey. Immaculately maintained and further upgraded by the current owners, the property offers generous and versatile accommodation arranged over three well designed floors.

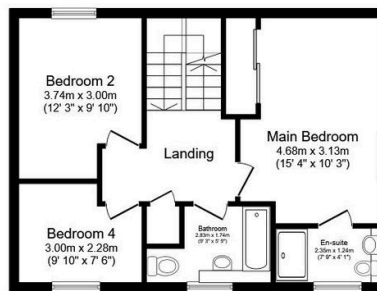
## Key Features

- Five bedroom detached family home in a modern and desirable development
- Beautifully upgraded and move in ready throughout
- Westerly facing garden that enjoys the afternoon and evening sun
- Part converted garage providing a fully functioning garden office
- Private driveway parking for up to six vehicles plus double garage
- Under 10 minutes walk to Arlesey mainline station
- Redesigned rear kitchen diner with bifold doors and garden canopy
- Converted study forming a large practical utility room
- Main bedroom with ensuite on the first floor
- Flexible three storey layout ideal for families or those working from home



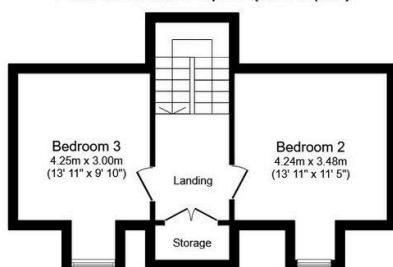
**Ground Floor**

Floor area 63.9 sq.m. (687 sq.ft.)



**First Floor**

Floor area 49.3 sq.m. (530 sq.ft.)



**Second Floor**

Floor area 33.4 sq.m. (359 sq.ft.)

Total floor area: 146.5 sq.m. (1,577 sq.ft.)

This floor plan is for illustrative purposes only. It is not drawn to scale. Any measurements, floor areas (including any total floor area), openings and orientations are approximate. No details are guaranteed, they cannot be relied upon for any purpose and do not form any part of any agreement. No liability is taken for any error, omission or misstatement. A party must rely upon its own inspection(s). Powered by [www.Propertybox.io](http://www.Propertybox.io)