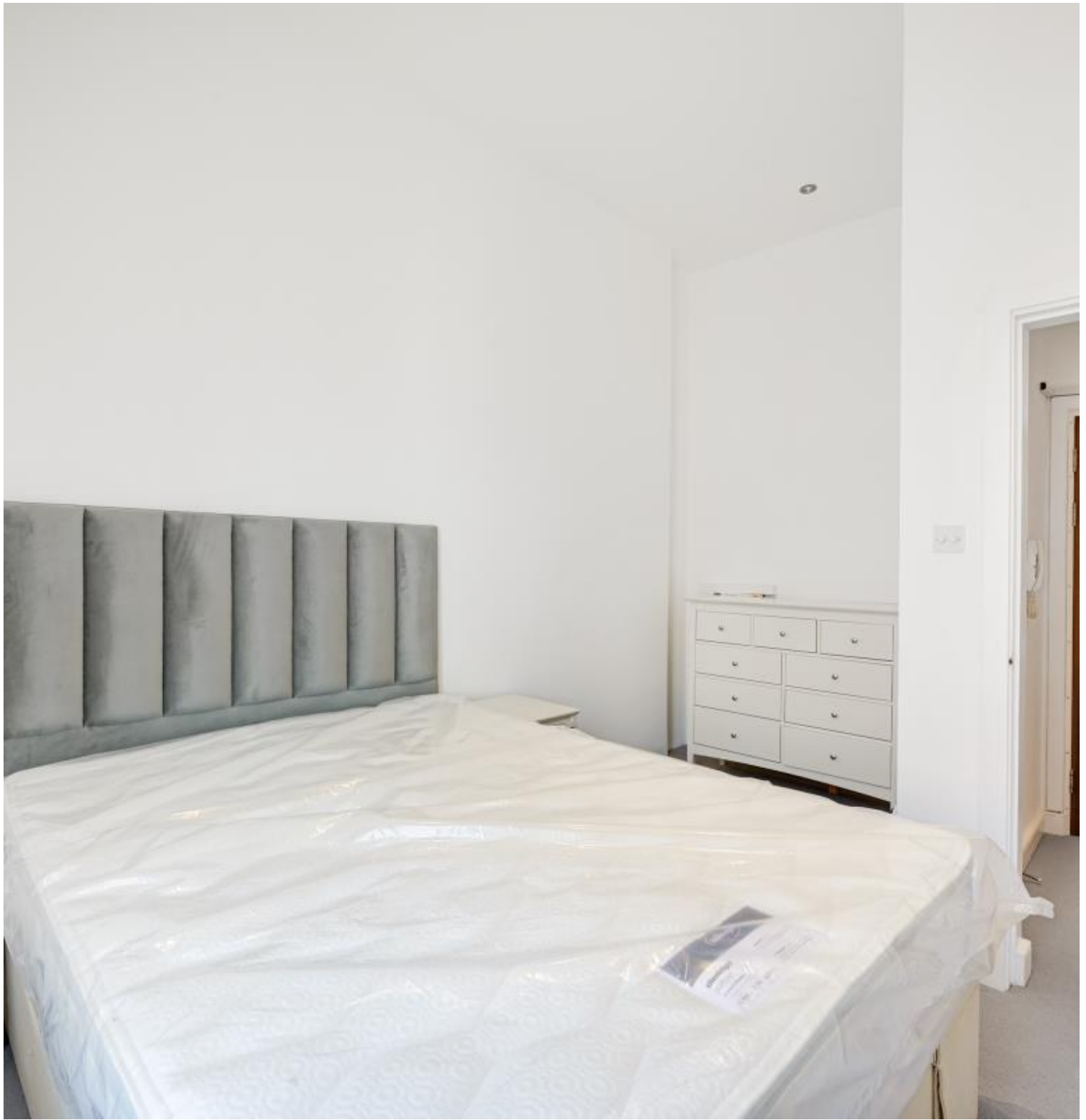




# Egerton Gardens, London SW3

Price £550 per week - Furnished







## Description

A comfortable one bedroom apartment on the second floor of a period red brick building on Egerton Gardens. The property comprises one double bedroom, shower room, open plan kitchen, reception with dining area and access to the private gardens. The building also benefits from a resident caretaker and close proximity to the shops and transport of Knightsbridge and South Kensington.

Council tax band: F. Rent is payable on a monthly basis, and you may be required to pay more than a month's rent in advance for tenancies with annual rents exceeding £100,000. You will be required to pay a 1 week holding deposit following a successful offer. Tenancies with annual rents up to £50,000 will require a 5 weeks' security deposit, while those exceeding this threshold will require a 6 weeks' deposit. Utility bills, council tax, telephone line and broadband are not included in the rent. As well as paying the rent, you may also be required to make some additional permitted payments. If your tenancy does not qualify as an APT, additional fees may apply. Please visit [jll.co.uk/fees](http://jll.co.uk/fees) for details of fees that may be payable when renting a property. To check broadband and mobile phone coverage please visit Ofcom here [ofcom.org.uk/phones-telecoms-and-internet/advice-for-consumers/advice/ofcom-checker](http://ofcom.org.uk/phones-telecoms-and-internet/advice-for-consumers/advice/ofcom-checker)

- One double bedroom
- Open plan kitchen
- Reception room
- Dining area
- Access to the private gardens
- Shower room
- Second floor
- Furnished
- Approx. 390 sq ft (36.27 sq m)
- EPC: D

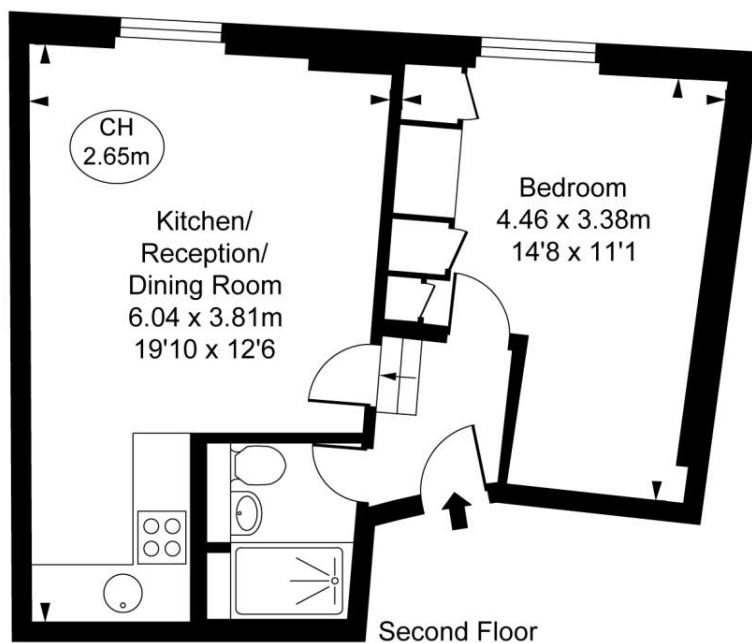
# Floorplan

390 sq ft | 36 sq m

## Southwell House, Egerton Gardens, SW3

Approximate Gross Internal Area  
36.27 sq m / 390 sq ft

( CH = Ceiling Heights )



This plan is not to scale. It is for guidance and not for valuation purposes.  
All measurements and areas are approximate only, and have been prepared in accordance with the current edition of the RICS Code of Measuring Practice.  
© Fulham Performance

Chelsea  
2 Cale Street,  
London SW3 3QU  
+4420 7399 5010  
saleschelsea@jll.com

*Urban living, your way.*

[jll.co.uk/residential](http://jll.co.uk/residential)

© 2019 Jones Lang LaSalle IP, Inc. All rights reserved. All information contained herein is from sources deemed reliable; however, no representation or warranty is made to the accuracy thereof.

