





Property Description

A spacious traditional extended five-bedroom semi-detached family home situated in a prime residential location close to Crabtree and High Beeches primary schools and Sir John Lawes secondary school. Offered for sale with vacant possession with a study and large kitchen/breakfast room. Situated on a corner plot with plenty of parking this property is approximately one mile from the mainline station.

Entrance Hall

Door to the front, stairs with cupboard under

Study

5' 2" x 8' 8" (1.57m x 2.64m)

Laminate flooring, TV point and radiator

Lounge

14' 5" x 10' 8" (4.39m x 3.25m)

UPVC window to the front, French door to the kitchen, radiator and open fireplace with marble surround

Kitchen

24' x 14' 5" (7.32m x 4.39m)

Laminate flooring, radiator, Bi fold doors, spotlights, door to the utility and gas hob with oven.

Landing

Split level, airing cupboard, hatch loft access

Bedroom One

14' x 11' 6" (4.27m x 3.51m)

UPVC window to the front, x 2 radiators

Bedroom Two

11' 2" x 10' 4" (3.40m x 3.15m)

UPVC Window to the side and radiator

Bedroom Three

10' 3" x 7' 8" (3.12m x 2.34m)

UPVC window to the side and radiator

En Suite To Bedroom Three

Spotlights, UPVC window to the side, wash hand basin, LLWC, shower cubicle and tiled flooring

Bedroom Four

16' 3" x 8' 6" (4.95m x 2.59m)

UPVC window to the rear and side, radiator

Bedroom Five

9' 3" x 7' 4" (2.82m x 2.24m)

UPVC window to the rear and radiator

Bathroom

Velox window to the front, radiator, fully tiled, LLWC and wash hand basin.

Loft Space

Fully boarded with ladder, power and light

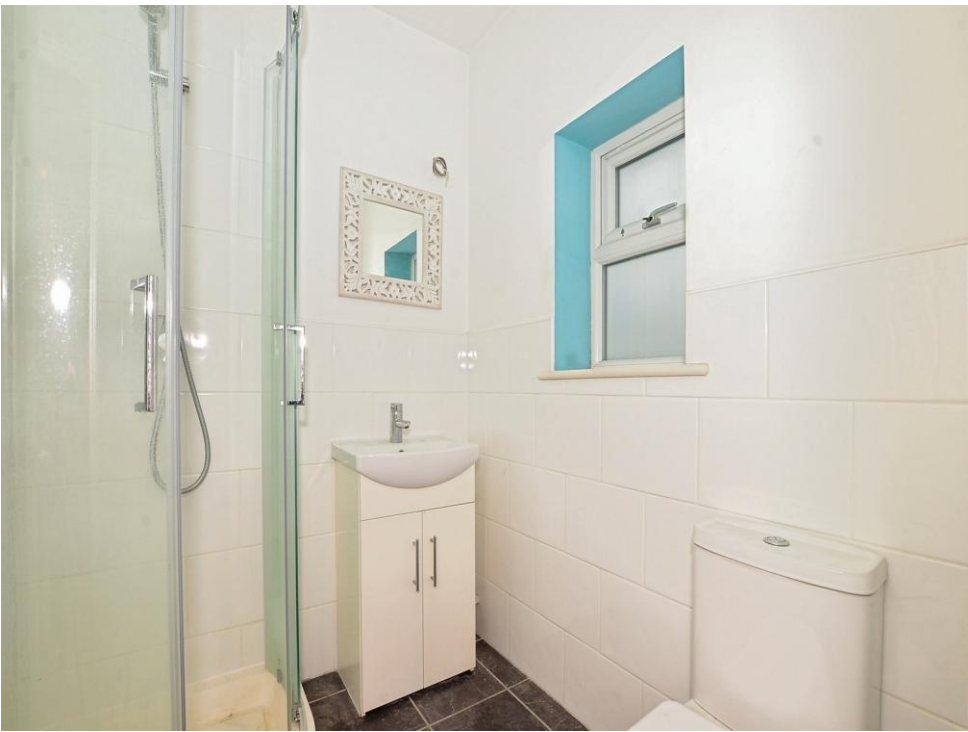
Rear Garden

mostly laid to lawn, situated as corner plot so narrows to a point

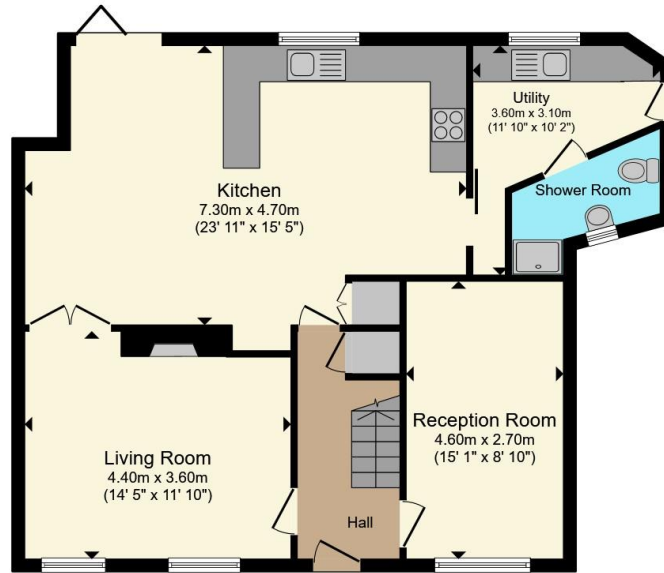
Parking

Driveway for three cars

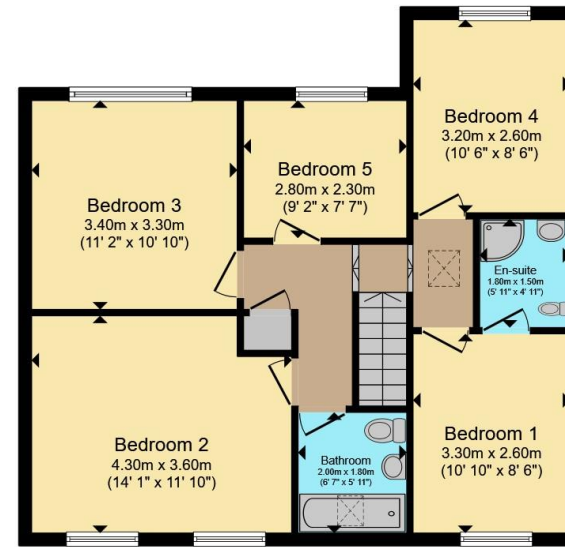








Ground Floor



First Floor

Total floor area 146.2 m² (1,574 sq.ft.) approx

This floor plan is for illustrative purposes only. It is not drawn to scale. Any measurements, floor areas (including any total floor area), openings and orientation are approximate. No details are guaranteed, they cannot be relied upon for any purpose and they do not form part of any agreement. No liability is taken for any error, omission or misstatement. A party must rely upon its own inspection(s). Powered by www.propertybox.io

Connells

To view this property please contact Connells on

T 01582 760 131
E harpenden@connells.co.uk

50 High Street
 HARPENDEN AL5 2SU

EPC Rating: C Council Tax
 Band: E

Tenure: Freehold

view this property online connells.co.uk/Property/HPN307028



1. MONEY LAUNDERING REGULATIONS Intending purchasers will be asked to produce identification documentation at a later stage and we would ask for your co-operation in order that there will be no delay in agreeing the sale. 2. These particulars do not constitute part or all of an offer or contract. 3. The measurements indicated are supplied for guidance only and as such must be considered incorrect. Potential buyers are advised to recheck measurements before committing to any expense. 4. We have not tested any apparatus, equipment, fixtures, fittings or services and it is in the buyers interest to check the working condition of any appliances.

Connells Residential is registered in England and Wales under company number 1489613, Registered Office is Cumbria House, 16-20 Hockliffe Street, Leighton Buzzard, Bedfordshire, LU7 1GN. VAT Registration Number is 500 2481 05.

See all our properties at www.connells.co.uk | www.rightmove.co.uk | www.zoopla.co.uk

Property Ref: HPN307028 - 0011