



Guide Price
£400,000
Freehold

4x  1x  2x 

Herne Bay Road, Tankerton, Whitstable,
Kent, CT5

Wards
Helping you move forwards

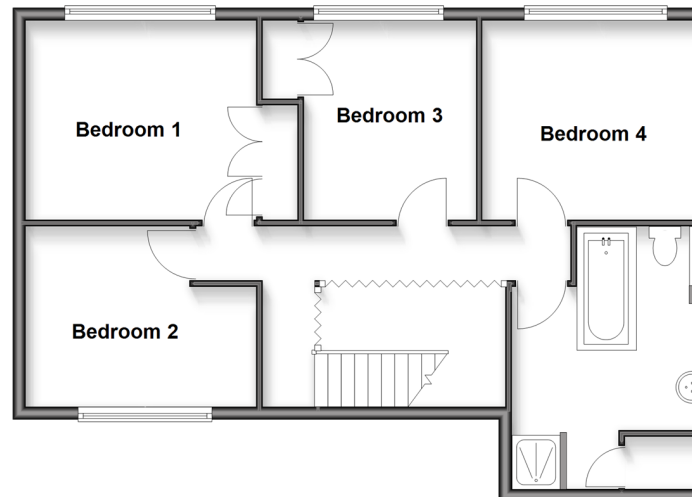
Ground Floor

Approx. 107.0 sq. metres (1151.6 sq. feet)



First Floor

Approx. 62.5 sq. metres (672.5 sq. feet)



Accommodation

GROUND FLOOR

Entrance Hallway

Kitchen: 12'0 x 10'10 (3.66m x 3.30m)

Conservatory: 11'3 x 9'5 (3.43m x 2.87m)

Cloakroom

Dining Area: 11'4 x 10'11 (3.46m x 3.33m)

Lounge: 20'0 x 11'11 (6.10m x 3.63m)

FIRST FLOOR

Bedroom 1: 12'0 x 8'9 (3.66m x 2.67m)

Bedroom 2: 12'0 x 10'11 (3.66m x 3.33m)

Bedroom 3: 10'9 x 9'1 (3.28m x 2.77m)

Bedroom 4: 10'11 x 10'10 (3.33m x 3.30m)

Bathroom

OUTSIDE

Front Garden

Driveway

Rear Garden

OUT BUILDING

Double Garage



Main features

- No onward chain
- Double garage and driveway
- Mid-century design with wide rooms and a beautiful entrance hallway
- A short walk to the beach and Tankerton slopes
- Large kitchen/conservatory area with a separate dining room and lounge

Nearest Schools

Primary Schools: Swalecliffe Community Primary 0.1 miles, St Mary's Catholic Primary 1.0 miles, Briary Primary 1.5 miles

Secondary Schools: The Whitstable School 1.3 miles,

Transport Information

Train Stations: Chestfield & Swalecliffe 0.1 miles, Whitstable 1.2 miles, Herne Bay 2.3 miles

Address

Herne Bay Road, Tankerton, Whitstable, Kent, CT5

Directions

For directions to this property please contact us.



Wards
Helping you move forwards

Call Whitstable Branch 01227 772272 ■ wardsofkent.co.uk



■ Legal advice should be taken to verify fixtures/fittings, planning, alterations and/or lease details ■ Appliances & services are untested, dimensions are approximate and floor plans are not to scale



16003105/20260112/AR/NF