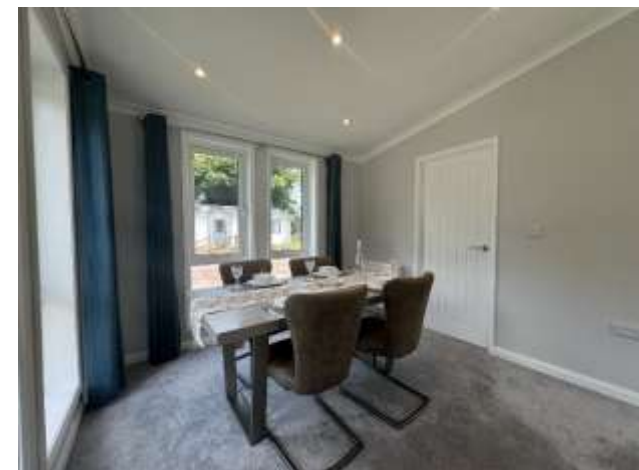


# Stretton, Derbyshire, DE55



Price as listed



This brand-new, modern-furnished Lesko Winchester (42'x20') luxury park home is perfect for those looking for a detached, easy-to-maintain, bungalow-style property. The home has a modern, spacious kitchen with integrated appliances, a comfortable living and dining area, two double bedrooms, an en suite and a bathroom.

The residential park home development is located on a private road, with glorious views of the surrounding rolling hills. Overlooking beautiful waters and close to a variety of convenient road links, the park provides a peaceful and idyllic setting. The development is situated between the towns of Clay Cross and Alferton, you're within easy access to the local amenities, but also Matlock and the gorgeous Peak District. The area is full of countryside walks, historical sites and small villages. The larger cities of Sheffield and Nottingham are both a 20-minute drive from the park.

Age restriction: Over 45s

Site fees: £319.05 per month

Pet friendly: Yes

Residential license

### House to sell?

Hassle-free Property Part-Exchange is available from Quickmove Properties, with no estate agent fees, no solicitor's fees and no market uncertainty.

### Key Features

- Brand new home
- Close To Nearby Amenities
- Countryside location
- Exceptionally High Specification
- Modern design
- Over 45s
- Part Exchange Available
- Pet-Friendly
- Private, Gated Development
- Two bedrooms



## CONTACT US

01793 840917

[advice@quickmoveproperties.co.uk](mailto:advice@quickmoveproperties.co.uk)

**Quickmove**  
PROPERTIES

