

LEASEHOLD



Apartment

APARTMENT BI THE ARC BI 53 MARTINGALE WAY, PORTISHEAD, BRISTOL BS20 7LH

Price Guide

£350,000

FEATURES

- Ground Floor Apartment
- Three Bedrooms
- Three Bathrooms
- Beautiful Marina Views
- Stunning Curved Terrace
- Secure Parking Space
- 12 year Building Warranty



bestjeffers

LETTINGS | MANAGEMENT | STUDENTS

3 Bedroom Apartment located in Portishead

Living/ Kitchen / Diner

11.40m x 5.90m (37' 5" x 19' 4")

Master Bedroom

4.50m x 3.90m (14' 9" x 12' 10")

Master Ensuite

Bedroom 2

5.10m x 4.10m (16' 9" x 13' 5")

Bed 2 Ensuite

Bedroom 3

5.20m x 3.30m (17' 1" x 10' 10")

Bathroom

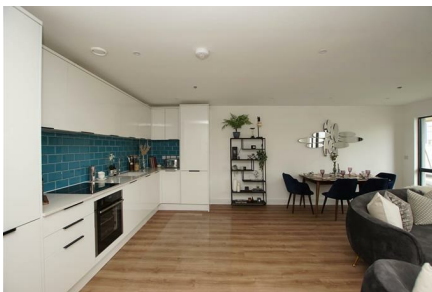
2.90m x 1.80m (9' 6" x 5' 11")

Full Description

SHOW APARTMENT AVAILABLE FOR VIEWINGS.

Perfectly positioned on the fringes of Portishead Marina, ARC is home to 26 new apartments. With 1, 2 and 3 bedroom homes available, including a penthouse with panoramic views, all apartments are finished to a high specification and a lift to all floors. GF Apartment A-0 3 Bedrooms 3 Bathrooms Located in the heart of Portishead, there is an abundance of independent shops, bars and restaurants, all within walking distance of ARC. Whether you're looking to enjoy dinner with friends, a stroll around the shops or a day at the beach, get ready to explore this

vibrant neighbourhood. With secure parking, video entry system and panoramic views, this property is not to be missed.



BESTE ESTATES SALES | 69 OAKFIELD ROAD, CLIFTON, BRISTOL, BS8 2BB

Call us on

01173259721

sales@bestestates.co.uk

www.bestestates.co.uk

Council Tax Band

D



Energy Efficiency Rating		Current	Potential
Very energy efficient - lower running costs			
(92 plus) A			
(81-91) B		85	85
(69-80) C			
(55-68) D			
(39-54) E			
(21-38) F			
(1-20) G			
Not energy efficient - higher running costs			
England & Wales		EU Directive 2002/91/EC	

Agents Note: Whilst every care has been taken to prepare these particulars, they are for guidance purposes only. All measurements are approximate and are for general guidance purposes only and whilst every care has been taken to ensure their accuracy, they should not be relied upon and potential buyers are advised to recheck the measurements.

