

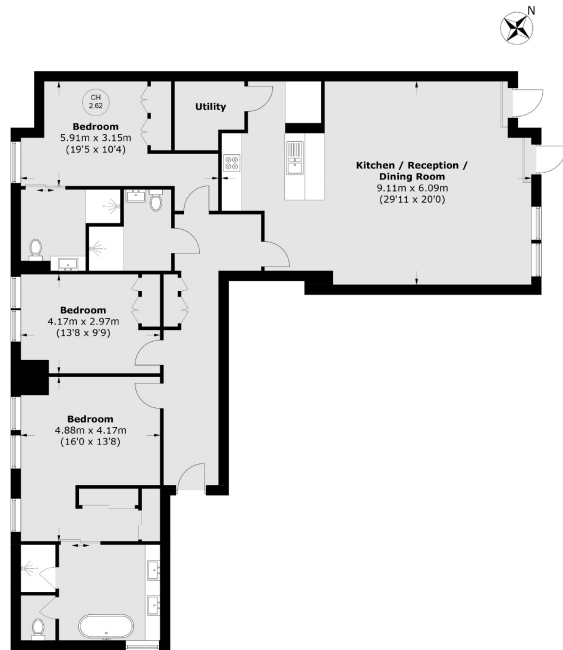


# CORK STREET

## MAYFAIR W1S



LOCATED IN THE HEART OF MAYFAIR AND SITUATED ON THE SECOND FLOOR OF THIS NEW PORTERED BUILDING, THE APARTMENT OFFERS HIGH SPECIFICATION LIVING, THREE DOUBLE BEDROOMS AND THREE LUXURY BATHROOMS.



Total area (approx.): 144.6 sq. m (1,556.2 sq. ft)

With wooden flooring to the living spaces, this spacious apartment has an open plan kitchen and elegant reception room with dining area and separate utility room.

The property further consists of a main bedroom with en suite bathroom and dressing area, two additional double bedrooms, one with en suite shower room and family bathroom.

The spa and state-of-the-art gymnasium offers a 24-hr, air-conditioned fitness facility along with sauna and treatment room. In addition to the concierge service

#### FEATURES

- Three Double Bedrooms
- Three Bathrooms
- Lift Access
- Parking Available (separate negotiation)
- 24 hr Concierge
- Residents' Leisure Facilities

Price: £4,850 Per week

We aim to make our particulars both accurate and reliable. However they are not guaranteed; nor do they form part of an offer or contract. If you require clarification on any points then please contact us, especially if you're traveling some distance to view. Please note that appliances and heating systems have not been tested and therefore no warranties can be given as to their working order. Energy Rating: B

Burlington Gate is renowned for its discreet luxury and five star amenities, including 24 hour concierge, residents' gym, and secure underground parking (Parking is available here under separate negotiation). Positioned moments from Savile Row, Regent Street and the Royal Academy of Arts, it places you at the heart of Mayfair's culture, shopping and fine dining.



**WETHERELL**  
MAYFAIR'S FINEST PROPERTIES

102 Mount Street • London • W1K 2TH  
T: 020 7529 5588 E: [rentals@wetherell.co.uk](mailto:rentals@wetherell.co.uk)

[wetherell.co.uk](http://wetherell.co.uk)

NO ONE KNOWS MAYFAIR BETTER THAN WETHERELL