



Quicks Road, SW19

£825,000

An end of terrace, two double bedroom Victorian house overlooking the park. The property still retains the ability to rear and loft extend, with a south facing garden and no onward chain.

Quicks Road is a residential street in 'the battles' area of Wimbledon. Close to the shops and eateries of both Wimbledon Broadway and South Wimbledon and access to Wimbledon Mainline station as well as the Northern line at South Wimbledon.

Features

- End Of Terrace
- Victorian
- Overlooking The Park
- South Facing Garden
- No Onward Chain
- Three Reception Rooms



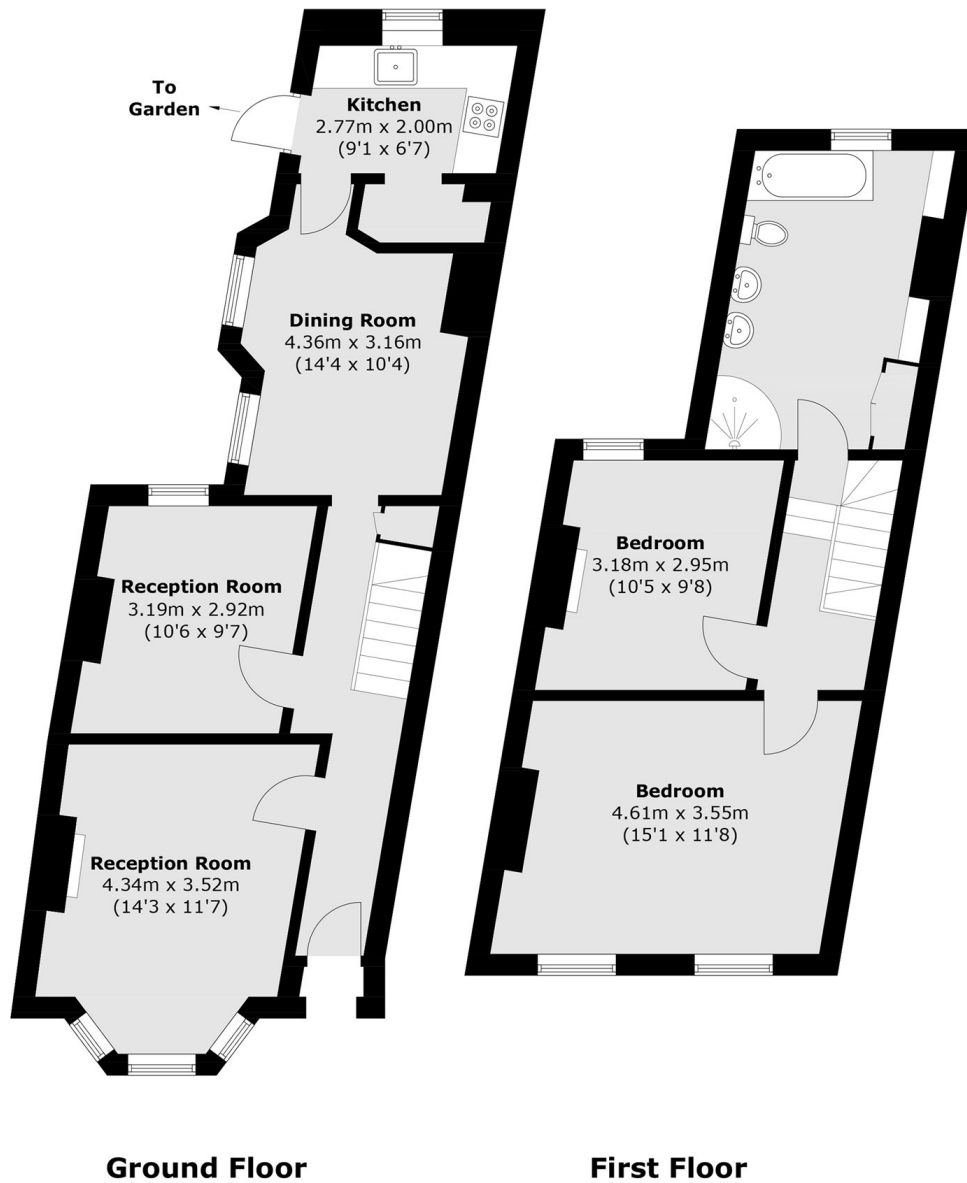
Quicks Road, SW19

The house has a separate reception room to the front, with a second reception room and a dining room that leads on to the kitchen to the rear. The house lends itself perfectly to being extended to the side and rear, to create a wonderful open kitchen/ dining room.

The first floor has two double bedrooms and a large family bathroom, with the ability to extend the loft to turn the house in to a four double bedroom, two bathroom home, overlooking the park.



Quicks Road, London, SW19



Total area (approx.): 95.1 sq. m (1,023.6 sq. ft)