



HOLME COTTAGE

West Horsley, Surrey



A CHARMING COUNTRY HOUSE BLENDING HERITAGE CHARACTER WITH MODERN COMFORT

Set in beautiful gardens on the edge of this prime Surrey village.

Summary of accommodation

Reception hall | Extensive drawing room | Kitchen leading through to dining conservatory

Family room leading through to Alitex garden room | Utility room | Cloakroom

Principal bedroom with en suite bathroom | Five further bedrooms | Family bathroom | Shower room

Annexe with workshop/garage and first floor accommodation with kitchen/living/dining room
bathroom and mezzanine platform

Period barn with store and greenhouse | Triple barn style car port

Beautiful gardens, grounds and paddock

In all about 1.93 acres

Distances: Horsley Station 2.3 miles, Cobham 5.6 miles, Guildford 5.8 miles
(All distances are approximate)



OVERVIEW

Holme Cottage is a well-presented period home offering over a total of 5,400 sq ft of property, including a superb main house of 3824 sq ft, an adjacent separate annexe, and versatile outbuildings including a lovely period barn.

Nestled in the sought-after village of West Horsley, this remarkable property combines rural tranquility with excellent access to Guildford, Cobham, and London. Situated opposite the National Trust's Hatchlands Park Estate and offering excellent walking from nearby footpaths, Holme Cottage is also within close proximity of the Surrey Hills AONB and RHS Wisley.

Local amenities include traditional pubs, village shops, excellent schools, and direct train services to London Waterloo from nearby Horsley Station. In addition, the property is situated equidistant to Heathrow and Gatwick Airports, via the A3/M25.

Set behind a discreet entrance, Holme Cottage enjoys picturesque gardens, an extensive driveway, and wonderful entertaining space both indoors and out—making it the perfect family home or country retreat.



ACCOMMODATION

Ground Floor

The elegant reception hall opens into a sequence of welcoming rooms, including a drawing room (38'9 x 24'3) with open fireplace and French doors to the terrace. A family room, Alitex garden room, and light-filled dining conservatory create an exceptional flow for both relaxation and entertaining.

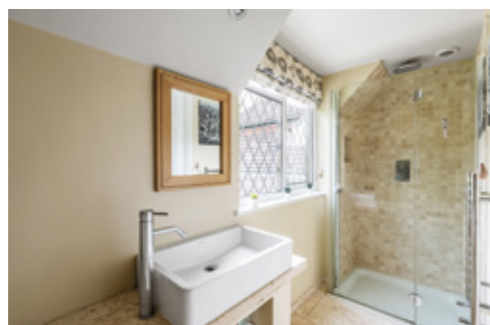
The heart of the home is the kitchen, superb open-plan space with views over the garden, complemented by a utility room.

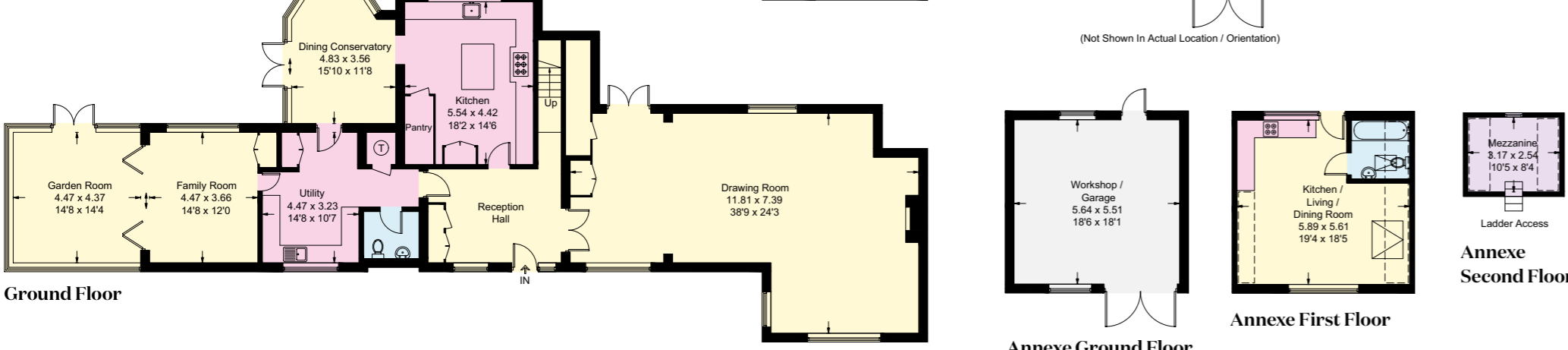
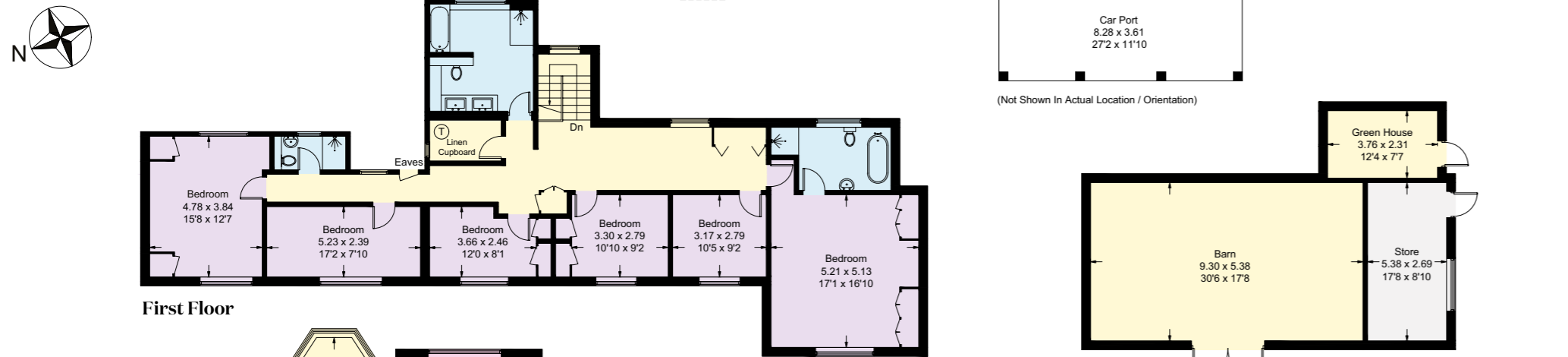
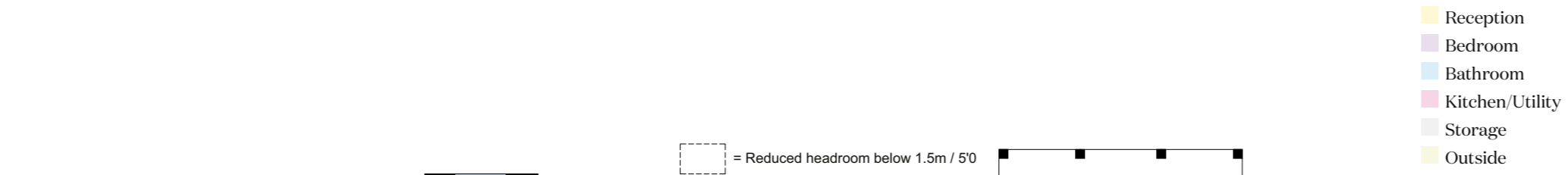
First Floor

The first floor offers six bedrooms, including a generous principal suite (17'1 x 16'10) with en suite facilities and charming garden outlook. Additional bedrooms provide flexible accommodation for family, guests, or home working.



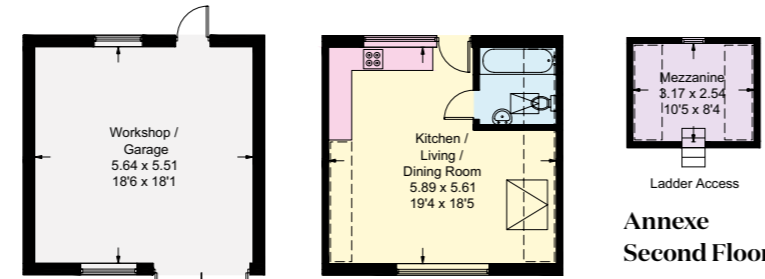
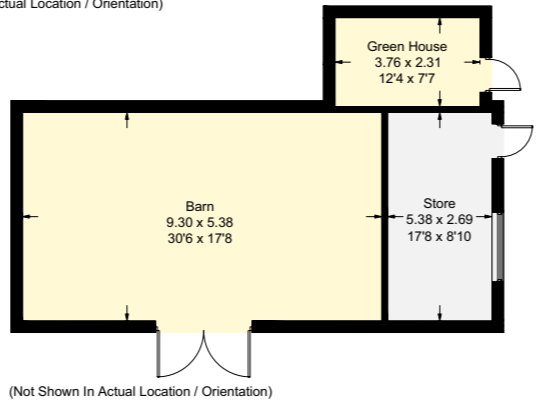
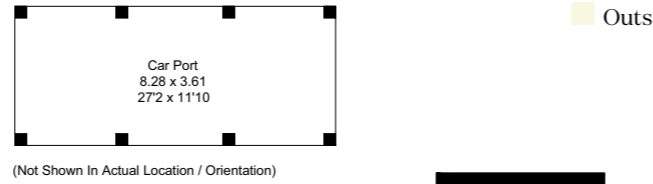
Utility Room





Approximate Gross Internal Area
 355.3 sq m / 3824 sq ft
 Annexe = 72.8 sq m / 784 sq ft
 Outbuilding = 75.4 sq m / 811 sq ft
 Total = 503.5 sq m / 5419 sq ft (Excluding Car Port)

This plan is for layout guidance only. Not drawn to scale unless stated. Windows and door openings are approximate. Whilst every care is taken in the preparation of this plan, please check all dimensions, shapes and compass bearings before making any decisions reliant upon them.



Annexe Ground Floor (Not Shown In Actual Location / Orientation)

Annexe First Floor

Annexe Second Floor



ANNEXE

The self-contained annexe (approx. 784 sq ft) spans three levels (including mezzanine) and includes comfortable living quarters, kitchen facilities, and sleeping accommodation—perfect for extended family, guests, or use as a home office or studio.

OUTBUILDINGS

A series of well-planned outbuildings include a barn (30'6 x 17'8), store and greenhouse, offering exceptional storage, hobby, or workspace potential.

In addition is a triple barn style car port.



GARDENS AND GROUNDS

The landscaped gardens are a highlight of Holme Cottage, providing a serene backdrop of mature trees, manicured lawns, and sun terraces. The grounds offer both privacy and space for outdoor entertaining, all within the tranquil setting of West Horsley's countryside. Aside from the gardens, there is a paddock of just over an acre ideal for those wishing to keep livestock or a pony.

PROPERTY INFORMATION

Tenure: Freehold

Services: Main water, electricity, oil fired heating and private drainage.

Local Authority: Guildford Borough Council: 01483 505050

Council Tax: Band H

EPC: D

Directions (KT24 6JR): what3words///exists.admit.weds





Tim Harriss

01483 617910

tim.harriss@knightfrank.com

Knight Frank Guildford

2-3 Eastgate Court, High Street

Guildford GU1 3DE

knightfrank.co.uk



**Knight
Frank**

Your partners in property

1. Particulars: These particulars are not an offer or contract, nor part of one. You should not rely on statements given by Knight Frank in the particulars, by word of mouth or in writing ("information") as being factually accurate about the property, its condition or its value. Neither Knight Frank nor any joint agent has any authority to make any representations about the property, and accordingly any information given is entirely without responsibility on the part of Knight Frank. 2. Material Information: Please note that the material information is provided to Knight Frank by third parties and is provided here as a guide only. While Knight Frank has taken steps to verify this information, we advise you to confirm the details of any such material information prior to any offer being submitted. If we are informed of changes to this information by the seller or another third party, we will use reasonable endeavours to update this as soon as practical. 3. Photos, Videos etc: The photographs, property videos and virtual viewings etc. show only certain parts of the property as they appeared at the time they were taken. Areas, measurements and distances given are approximate only. 4. Regulations etc: Any reference to alterations to, or use of, any part of the property does not mean that any necessary planning, building regulations or other consent has been obtained. A buyer must find out by inspection or in other ways that these matters have been properly dealt with and that all information is correct. 5. Fixtures and fittings: A list of the fitted carpets, curtains, light fittings and other items fixed to the property which are included in the sale (or may be available by separate negotiation) will be provided by the Seller's Solicitors. 6. VAT: The VAT position relating to the property may change without notice. 7. To find out how we process Personal Data, please refer to our Group Privacy Statement and other notices at <https://www.knightfrank.com/legals/privacy-statement>.

Particulars dated November 2025. Photographs and videos dated xxxxxx 20XX. All information is correct at the time of going to print. Knight Frank is the trading name of Knight Frank LLP. Knight Frank LLP is a limited liability partnership registered in England and Wales with registered number OC305934. Our registered office is at 55 Baker Street, London W1U 8AN. We use the term 'partner' to refer to a member of Knight Frank LLP, or an employee or consultant. A list of members names of Knight Frank LLP may be inspected at our registered office. If you do not want us to contact you further about our services then please contact us by either calling 020 3544 0692, email to marketing.help@knightfrank.com or post to our UK Residential Marketing Manager at our registered office (above) providing your name and address.

