



Price
£300,000

Freehold

3x  1x  1x 

**Derby Road, Upper
Gillingham, Kent, ME5**

OVER 60?

Secure this property
for up to **59% less!**

Wards
Helping you move forwards



Main features

- Perfect property for first time buyers
- Well presented and deceptively spacious
- Being sold chain free
- Low maintenance rear garden
- Benefits from a garage en-bloc
- Sought after Darland location

Accommodation

GROUND FLOOR

Entrance Hall

Lounge : 15'1 x 12'10 (4.60m x 3.91m)

Kitchen/Diner : 15'10 x 9'2 (4.83m x 2.80m)

FIRST FLOOR

Landing

Bedroom 1 : 12'10 x 9'0 (3.91m x 2.75m)

Bedroom 2 : 11'7 x 7'7 (3.53m x 2.31m)

Bedroom 3 : 9'7 x 6'8 (2.92m x 2.03m)

Bathroom

OUTSIDE

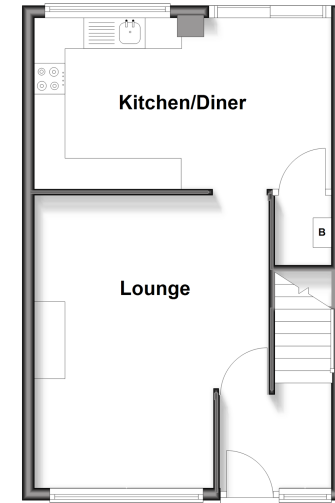
Front Garden

Rear Garden

Garage En-Bloc

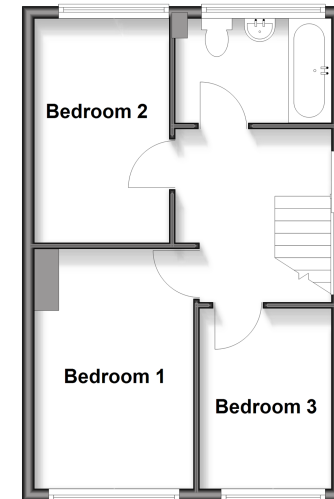
Ground Floor

Approx. 37.0 sq. metres (398.7 sq. feet)



First Floor

Approx. 37.3 sq. metres (401.3 sq. feet)



Call Rainham - 01634 373531 ■ wardsofkent.co.uk

■ Through a Homewise Home For Life Plan people aged 60+ can secure this property for up to 59% less, by purchasing a Lifetime Lease



11339280/20260325/CW/NJ