



Typleden Close, Hemel Hempstead, HP2 5YL

£400,000

Nestled in the Cul de Sac of Typleden Close, Highfield, this delightful terraced house offers a perfect blend of comfort and convenience. With three well-proportioned bedrooms, this property is ideal for families or those seeking extra space. The inviting lounge provides a warm and welcoming atmosphere, perfect for relaxation or entertaining guests. Adjacent to the lounge, the dining room offers a lovely setting for family meals and gatherings.

The house is equipped with gas central heating, ensuring a cosy environment throughout the colder months. The layout of the property is both practical and functional, making it easy to adapt to your lifestyle needs. In the rear garden there is the added bonus of a large summerhouse with the benefit of electric.

Located in a friendly neighbourhood, this home is within easy reach of local amenities, schools, and parks, making it an excellent choice for those who value community living. Whether you are a first-time buyer or looking to invest, this terraced house on Typleden Close presents a wonderful opportunity to create lasting memories in a lovely setting. Don't miss the chance to make this charming property your new home.

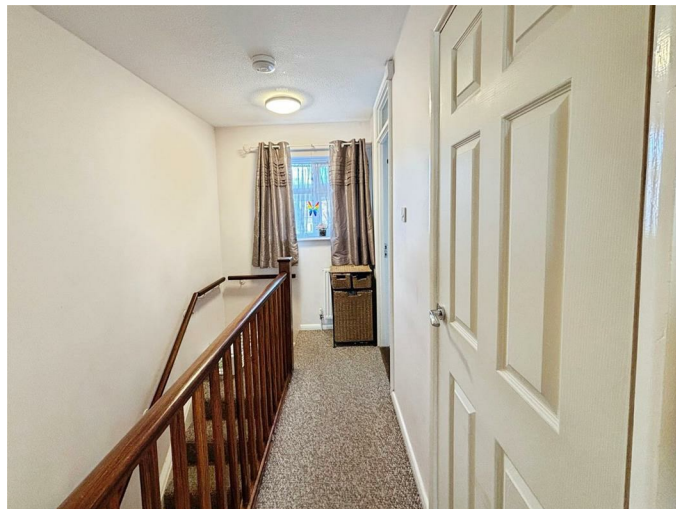
Entrance Hall

Cloakroom

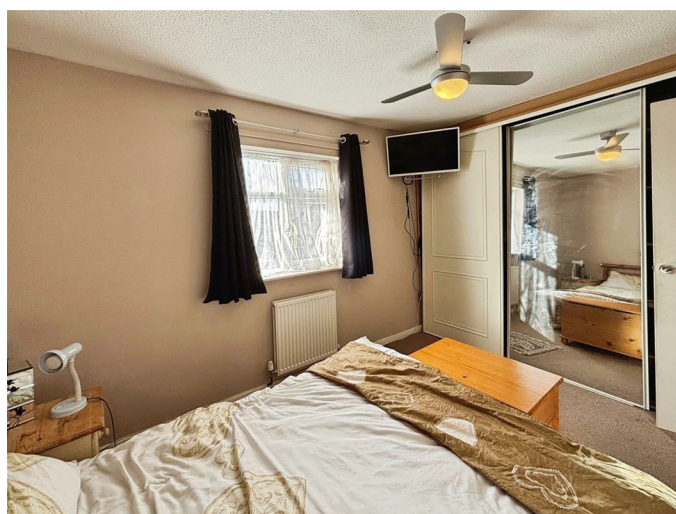
Lounge 13'4 x 12'10 (4.06m x 3.91m)



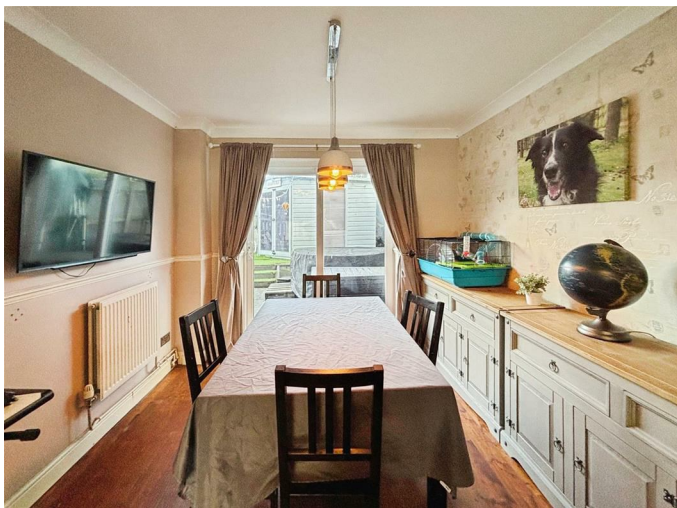
Landing



Bedroom One 11'5 x 8'9 (3.48m x 2.67m)



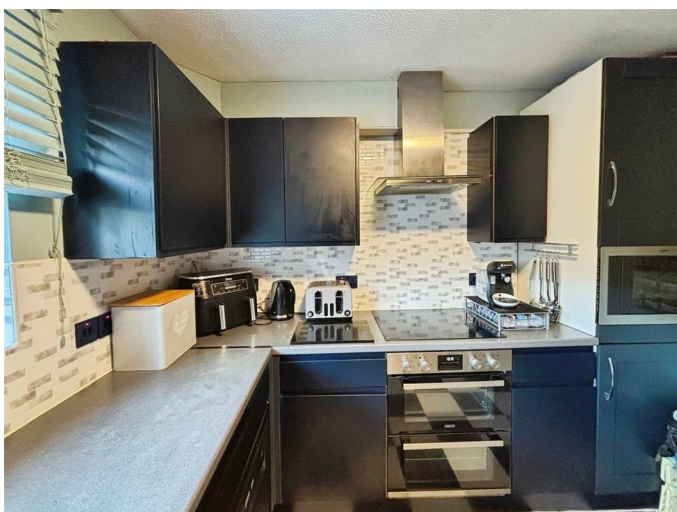
Dining Room 9'6 x 9'2 (2.90m x 2.79m)



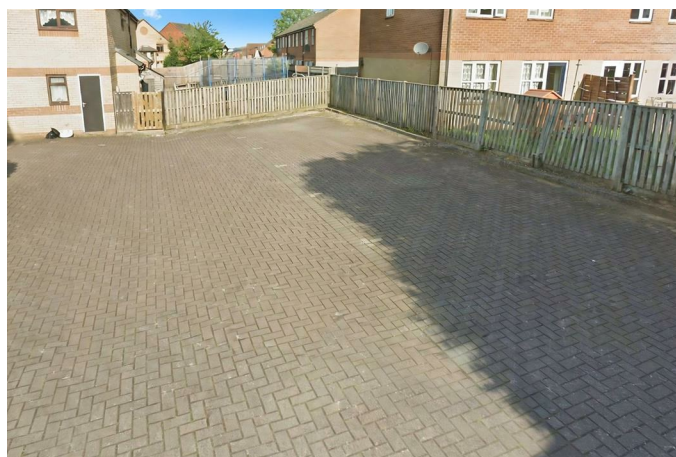
Bedroom Two 12'7 x 8'6 (3.84m x 2.59m)



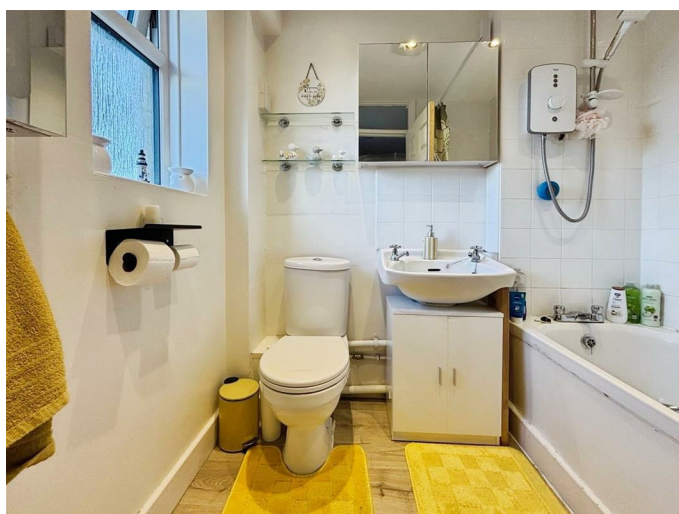
Fitted Kitchen 10'9 x 9'3 (3.28m x 2.82m)



Bedroom Three 8'10 x 7'4 (2.69m x 2.24m)



Bathroom

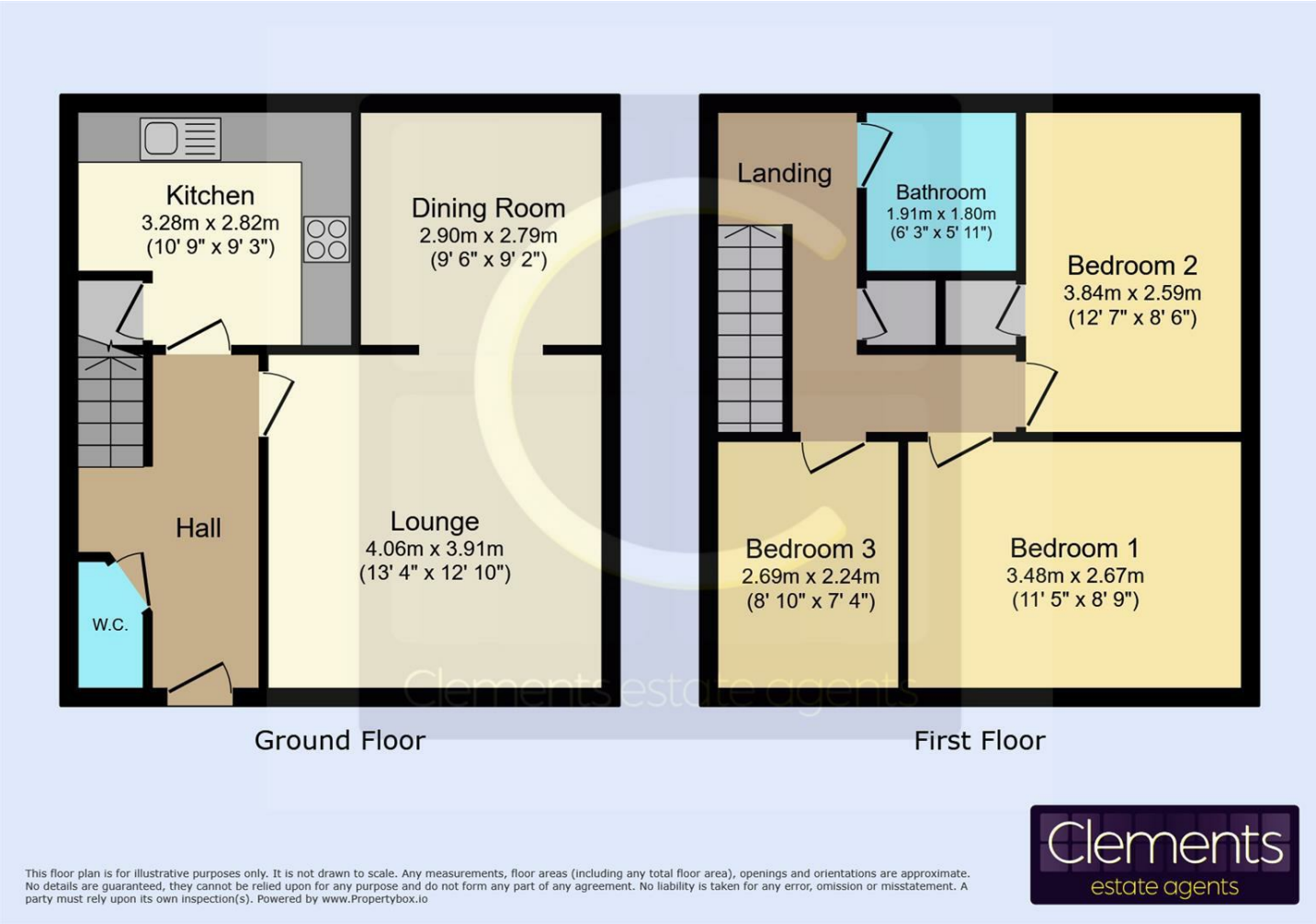


Rear Garden



Residents Parking

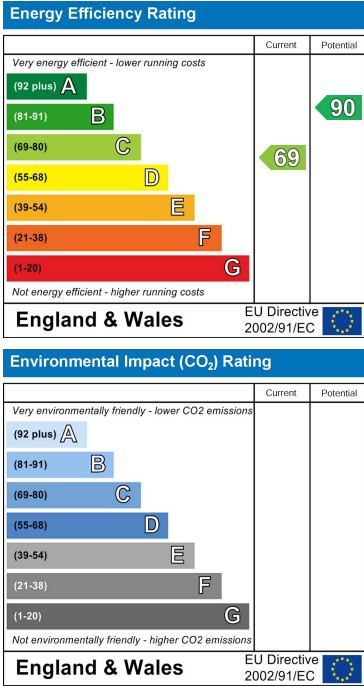
Floor Plan



Area Map



Energy Efficiency Graph



These particulars, whilst believed to be accurate are set out as a general outline only for guidance and do not constitute any part of an offer or contract. Intending purchasers should not rely on them as statements of representation of fact, but must satisfy themselves by inspection or otherwise as to their accuracy. No person in this firm's employment has the authority to make or give any representation or warranty in respect of the property.