



Page Street, SW1P | £2,250 Per Month



TUCKERMAN
ESTATE AGENTS
PROPERTY PROFESSIONALS

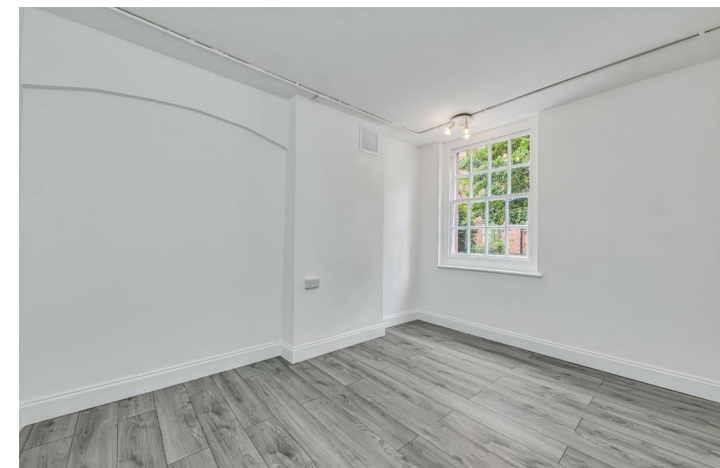
Page Street, Westminster, London

Set within an attractive Edwardian mansion block on Page Street, this well-proportioned, recently refurbished one-bedroom apartment offers practical living in the heart of Westminster.

Extending to approximately 489 sq ft, the property features a bright reception room, a quietly positioned bedroom and a neatly arranged bathroom, all benefitting from classic period proportions.

Ideally located for the amenities of Westminster, with shops, cafés and excellent transport links nearby.





Page Street, Westminster,

Per Month:

£2,250 Per Month subject to contract.

Tenure:

Local Authority:

City of Westminster


Council Tax Band:

B

Approximate Gross Internal Area:

489.00 sq ft

Energy Efficiency Rating

	Current	Potential
<i>Very energy efficient - lower running costs</i>		
(92 plus) A		
(81-91) B		
(69-80) C	73	79
(55-68) D		
(39-54) E		
(21-38) F		
(1-20) G		
<i>Not energy efficient - higher running costs</i>		
England & Wales	EU Directive 2002/91/EC	

020 7222 5510

info@tuckermanresidential.co.uk

52 Moreton Street, London, SW1PV 2PB

www.tuckermanresidential.co.uk

Agents Note: Whilst every care has been taken to prepare these sales particulars, they are for guidance purposes only. All measurements are approximate are for general guidance purposes only and whilst every care has been taken to ensure their accuracy, they should not be relied upon and potential buyers are advised to recheck the measurements

TUCKERMAN
E S T A T E A G E N T S
PROPERTY PROFESSIONALS