

LEASEHOLD



Maisonette (EPC Rating: C)

**3 CRAVEN ROAD, MAIDENBOWER,
CRAWLEY, WEST SUSSEX, RH10 7UW**

Price Guide

£240,000



1 Bedroom Maisonette located in Crawley

Well-presented one-bedroom ground-floor maisonette set within the highly sought-after area of Maidenbower, boasting a private garden, allocated parking, and spacious interior.

At the entrance, you are welcomed by a small porch leading into a bright and spacious living room, offering plenty of space for a sofa suite and additional furnishings.

The kitchen is neatly arranged with good storage, fitted appliances, and direct access to the garden - making it perfect for entertaining or enjoying a quiet morning coffee.

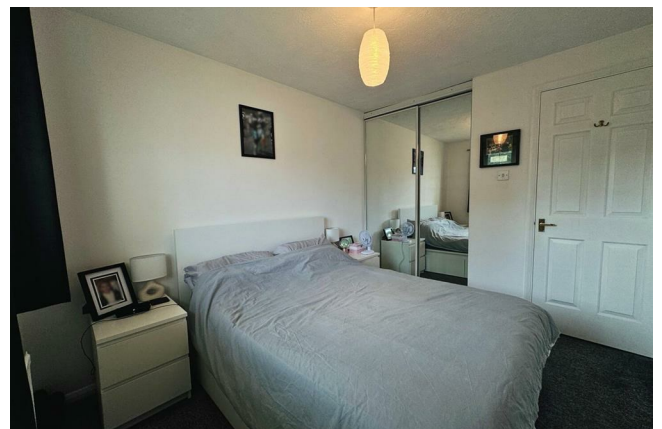
The double bedroom includes a built-in storage cupboard and comfortably accommodates a king-size bed along with free-standing furniture. The shower room is finished with a walk-in shower, WC, wash basin and extractor fan.

Offered with no onward chain, this maisonette would make an ideal first-time home or investment opportunity.

Lease Details

* Length of Lease: 999 years from 1/1/1980 (953 years remaining)

* Ground Rent: Peppercorn

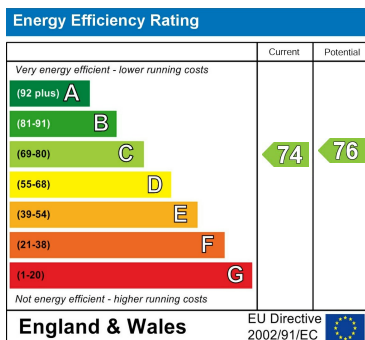


RICHMOND HOUSE - SALES | 105 HIGH STREET, CRAWLEY, WEST SUSSEX, RH10 1DD

Council Tax Band

B

Energy Performance Graph



Call us on

01293529993

info@connectukgroup.co.uk
connectukgroup.co.uk

Agents Note: Whilst every care has been taken to prepare these particulars, they are for guidance purposes only. All measurements are approximate and are for general guidance purposes only and whilst every care has been taken to ensure their accuracy, they should not be relied upon and potential buyers are advised to recheck the measurements.