



MEADOW VIEW, Epping Lane, Stapleford Tawney,

Asking Price £1,360,000

MILLERS

NEW HOMES



A select development of just four executive homes, set within open countryside and located within approximately two miles of Epping and Theydon Bois.

Situated in the heart of the Epping Forest district, Meadow View enjoys a peaceful rural setting surrounded by rolling fields, while remaining exceptionally well connected for London commuters. Nearby villages provide local amenities, creating an ideal balance between countryside living and everyday convenience.

Accessed via private security gates, the development offers four individually designed homes, all finished to a high specification with elegant, contemporary interiors.

Plot Four is a detached four-bedroom residence extending to approximately 2,099 sq ft.

The accommodation includes a welcoming reception hall, a bespoke Stoneham kitchen/dining room overlooking the gardens and adjoining open countryside, a formal sitting room with dual aspect and garden access, study, and utility room.

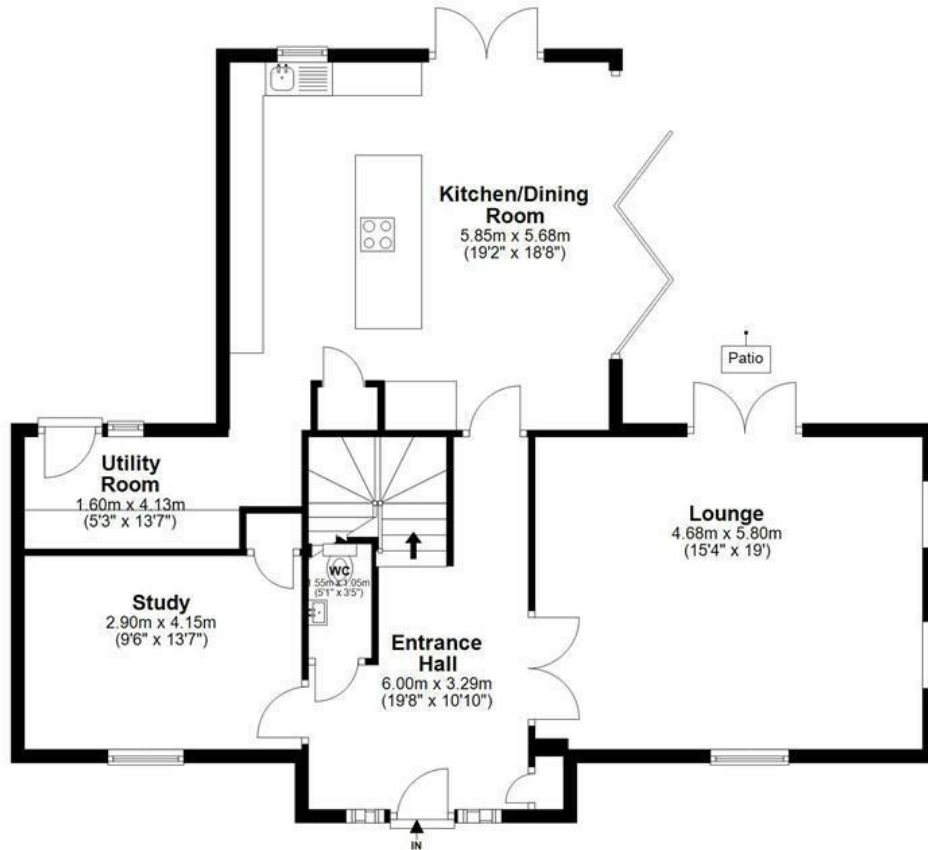
The first floor provides four generous bedrooms, including a principal bedroom and second bedroom with en-suite shower rooms, two further bedrooms, and a family bathroom.

Externally, the property occupies a larger plot backing onto open countryside, offering a delightful and private setting.

MILLERS
NEW HOMES

**Meadow Views
Stapleford Tawney**
Plot 4

Ground Floor



First Floor

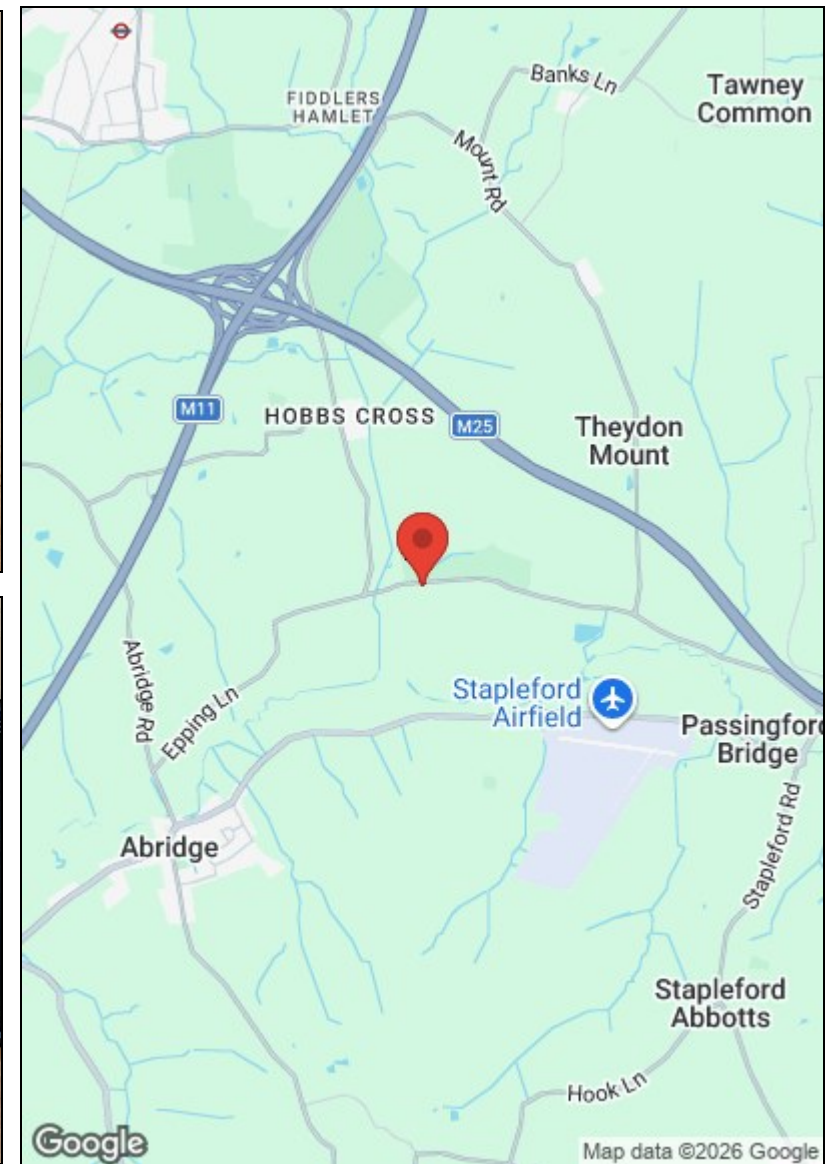


Total area : approx. 195 sq metres (2099 sq feet)

Our floor plans are intended to give a general indication of the proposed floor layout only and may vary in the finished building and overall footage

Directions

From Miller's office at 229 High Street, Epping CM16 4BP continue north along the High Street turning right into Stonards Hill, just past Theydon Grove development and opposite the EFDC Council offices, proceed to the T junction and turn left heading towards Theydon Mount and passing Hill Hall on your right continue to the T junction turn right into Epping Lane and continue until you reach the Meadow Views development on your left-hand side.



Viewing Please contact our Millers Office on 01992 560555 if you wish to arrange a viewing appointment for this property or require further information.

These particulars, whilst believed to be accurate are set out as a general outline only for guidance and do not constitute any part of an offer or contract. Intending purchasers should not rely on them as statements of representation of fact, but must satisfy themselves by inspection or otherwise as to their accuracy. No person in this firm's employment has the authority to make or give any representation or warranty in respect of the property.

229 High Street, Epping, Essex, CM16 4BP

Tel: 01992 560555 | Email: sales@millersepping.co.uk

www.millers-portfoliohomes.co.uk