

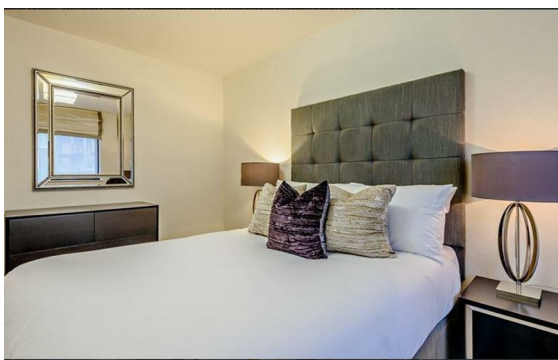
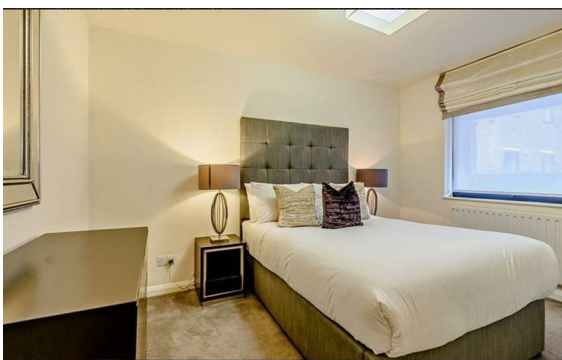


Fulham Road, South Kensington, London, SW3

Rent £900 Per Month

2 Bed | 2 Bath | 1 Reception

Please call us on 020 7724 2233 or email us info@newingtonstates.com to book a viewing.



A spacious two-bedroom apartment in the heart of South Kensington, set within a quiet, modern portered building with lift access. The property features a large reception room filled with natural light from expansive windows, alongside a bright, contemporary kitchen with fully integrated appliances.

Both bedrooms are comfortable doubles, making it well-suited for sharers or a small household. Available furnished or unfurnished, the apartment is managed directly by Residential Land, offering the benefit of on-site management, professional maintenance, and a 24-hour emergency helpline for added convenience and peace of mind.

Energy Efficiency Rating: C

Agents Note: Whilst every care has been taken to prepare these particulars, they are for guidance purposes only. All measurements are approximate and are for general guidance purposes only and whilst every care has been taken to ensure their accuracy, they should not be relied upon and potential buyers/tenants are advised to recheck the measurements.



60 Upper Montagu Street
London
W1H 1SN

020 7724 2233
info@newingtonestates.com

<http://www.newingtonestates.com>