



# Fellows Road

Belsize Park, NW3

£3,500 per month  
(£807.69 per week)

\*VIDEO TOUR AVAILABLE\*. Short Let. A lovely shared garden apartment in this smart period conversion in Belsize Park (Northern Line), walking distance to fashionable Primrose Hill and walking distance to Swiss Cottage (Jubilee Line). Accommodation comprises reception room, open plan kitchen, double bedroom, bathroom. Sole Agent.

**CHESTERTONS**



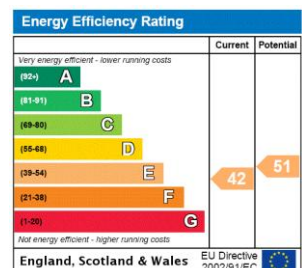
# Fellows Road

Belsize Park, NW3

- Short Let. A Lovely Shared Garden Apartment in Period Conversion
- 1 Bedroom, 1 Bathroom, Reception, Kitchen
- Excellent Location in Belsize Park (Northern Line), Walking Distance to Swiss Cottage (Jubilee Line)



**Minimum Term:** 3 months  
**Deposit Required:** £3,230.77  
**Local Authority:** London Borough Of Camden  
**Council Tax Band:** C  
**EPC Rating:** E  
**Furnished**



### Chestertons Hampstead Lettings

55-56 Hampstead High Street  
 Hampstead  
 London  
 NW3 1QH  
[hampsteadlettingsusers@chestertons.co.uk](mailto:hampsteadlettingsusers@chestertons.co.uk)  
 02077941125  
[chestertons.co.uk](http://chestertons.co.uk)

Additional tenant charges apply (fees apply to non-AST tenancies only)  
 Tenancy Agreement Fee: £300  
 References per Tenant/Guarantor: £60  
 Inventory check (approx. £100 – £250 inc. VAT)  
[chestertons.co.uk/property-to-rent/applicable-fees](http://chestertons.co.uk/property-to-rent/applicable-fees)

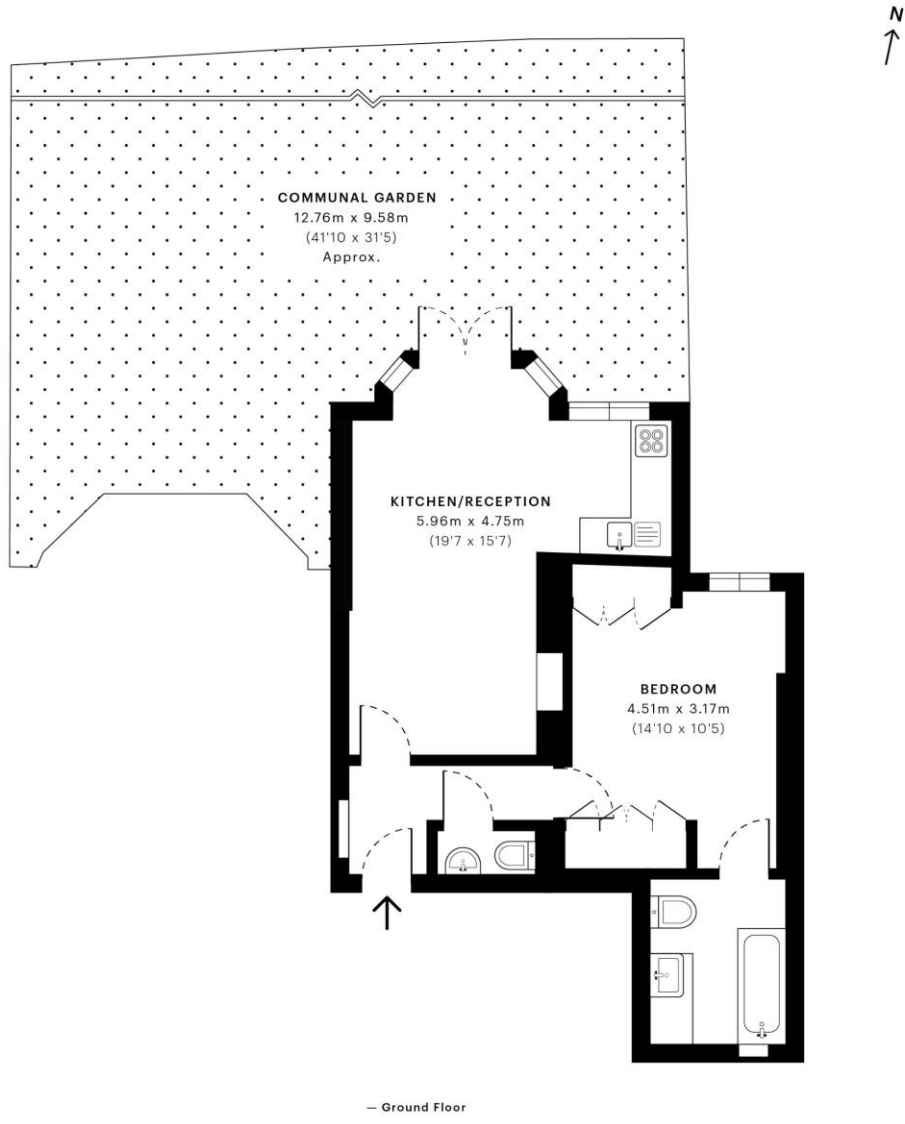


# Fellows Road, NW3

CAPTURE DATE 09/03/2022 LASER SCAN POINTS 3,197,890

GROSS INTERNAL AREA

45.88 sqm / 493.85 sqft



 **GROSS INTERNAL AREA (GIA)**  
The footprint of the property  
45.88 sqm / 493.85 sqft

 **NET INTERNAL AREA (NIA)**  
Excludes walls and external features  
Includes washrooms, restricted head height  
42.43 sqm / 456.71 sqft

 **EXTERNAL STRUCTURAL FEATURES**  
Balconies, terraces, verandas etc.  
0.00 sqm / 0.00 sqft

 **RESTRICTED HEAD HEIGHT**  
Limited use area under 1.5 m  
0.00 sqm / 0.00 sqft



Spec Verified floor plans are produced in accordance with Royal Institution of Chartered Surveyors' Property Measurement Standards. Plots and gardens are illustrative only and excluded from all area calculations. Due to rounding, numbers may not add up precisely. All measurements shown for the individual room lengths and widths are the maximum points of measurements captured in the scan.

IPMS 3B RESIDENTIAL 45.88 sqm / 493.85 sqft  
IPMS 3C RESIDENTIAL 42.43 sqm / 456.71 sqft

SPFC ID 622604528409740dbbf3bd0

