



# Regents Plaza Apartments

6 Greville Road, NW6

Asking Price £549,000

Sole Agent. A fantastic 2-bedroom, 2-bathroom apartment set in this modern portered building with underground parking.

The property is presented in good condition and has a spacious 17ft reception room and the added benefit of a 300 sq. ft. private terrace.

Regents Plaza is perfectly positioned for the multiple transport options available on the Edgware Road and is approximately half a mile from Maida Vale Underground station (Bakerloo Line).

**CHESTERTONS**



# Regents Plaza Apartments

6 Greville Road, NW6

- 2 Bedrooms 2 Bathroom
- Very Long Leasehold
- 843 sq. ft.
- Secure Parking
- Porter
- Lift
- Private Terrace



**Tenure:** Leasehold

**Service Charge:** £10,280pa Includes heating, hot water & sinking fund.

**Ground Rent:** £400pa

**Local Authority:** Camden

**Council Tax Band:** G

Score	Energy rating	Current	Potential
92+	A		
81-91	B		
69-80	C	80 C	80 C
55-68	D		
39-54	E		
21-38	F		
1-20	G		

### *Chestertons St John's Wood Sales*

105 St. John's Wood Terrace

London

NW8 6PL

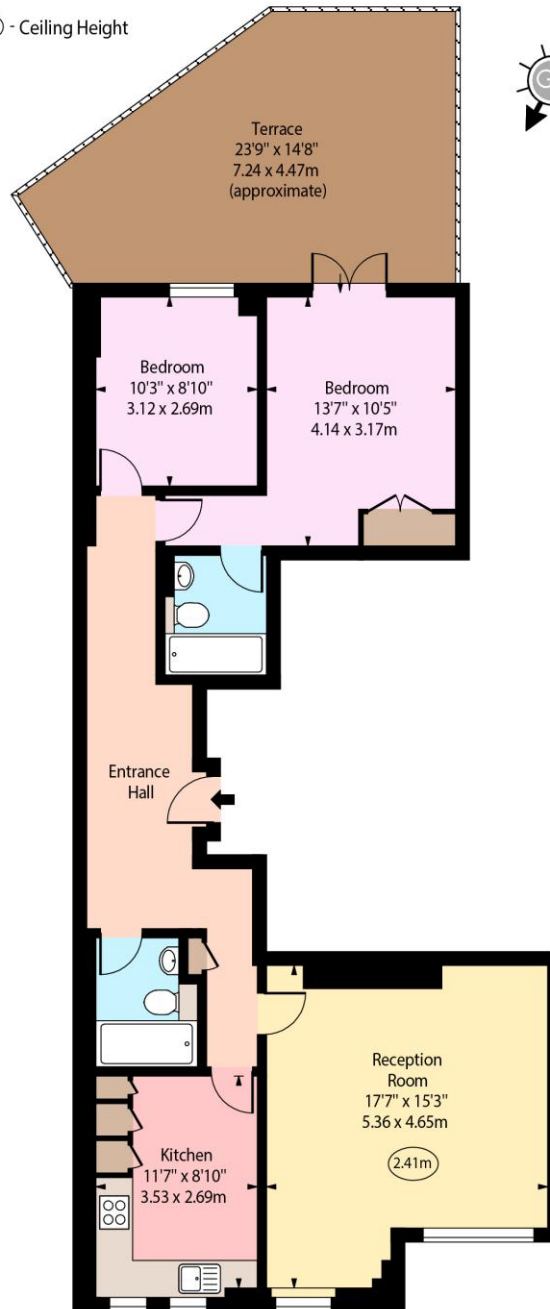
stjohnswood@chestertons.co.uk

020 3040 8611

chestertons.co.uk

Regents Plaza Apartments,  
Greville Road, NW6

○ - Ceiling Height



First Floor

Approx Gross Internal Area 843 Sq Ft - 78.31 Sq M

Every attempt has been made to ensure the accuracy of the floor plan shown. However, all measurements, fixtures, fittings, and data shown are approximate interpretations and for illustrative purposes only. Measured according to the RICS. Not To Scale.

www.goldlens.co.uk  
Produced for Chestertons  
Ref. No. 031108E

