



## Prospect Crescent, TW2

### £725,000

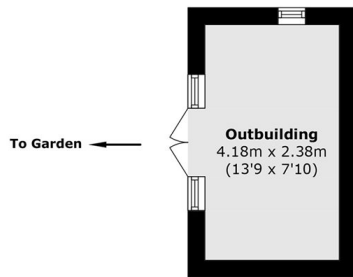
Situated on the sought after Prospect Crescent in Whitton, this beautifully presented four bedroom, fully extended terraced home offers generous living space ideal for modern family life. The ground floor features a gorgeous, cosy front reception room with a feature fireplace, complemented by a stunning open plan kitchen and dining area to the rear with ample storage, quality fittings, and direct access to the private garden perfect for entertaining.

Prospect Crescent is conveniently located within easy reach of Whitton High Street, outstanding local schools and excellent transport links into Central London, Richmond, Kingston.

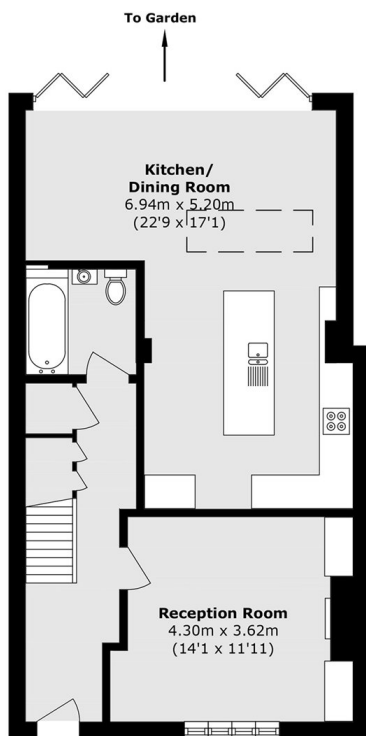
### Features

- Four Bedroom
- Fully Extended Rear & Loft
- Modern Open Plan Kitchen
- Early 1920's Build
- Fully Equipped Garden Studio
- Central Location

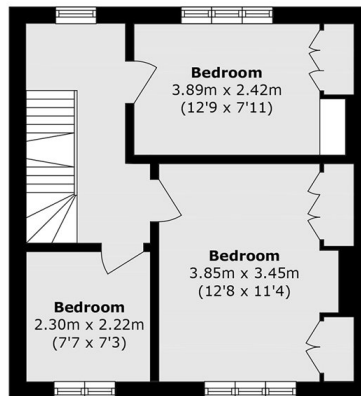
# Prospect Crescent, Twickenham, TW2



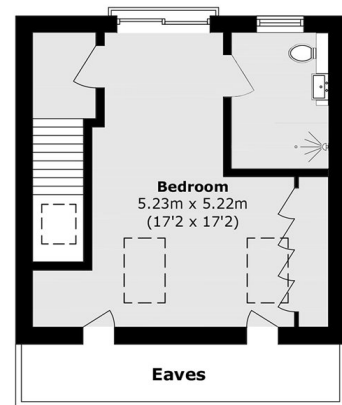
**Ground Floor**



**Ground Floor**



**First Floor**



**Second Floor**

Total area (approx.): 124.3 sq. m (1338.0 sq. ft)

(Excluding Eaves)

Outbuilding area (approx.): 9.9 sq. m (106.6 sq. ft)

## Dexters

Twickenham  
84 Heath Road  
Twickenham  
TW1 4BW

Sales  
020 8744 0074

Energy Rating: . We aim to make our particulars both accurate and reliable. However they are not guaranteed; nor do they form part of an offer or contract. If you require clarification on any points then please contact us, especially if you're traveling some distance to view. Please note that appliances and heating systems have not been tested and therefore no warranties can be given as to their good working order.

**RICS** | Regulated  
Estate Agent  
and Letting Agent

dexters.co.uk