



45 Holly Crescent, Windsor, SL4 5SL  
£499,950

 **HORLER**

## 45 Holly Crescent, Windsor, SL4 5SL

Set within the sought-after cul-de-sac of Holly Crescent, Windsor, this beautifully presented mid-terrace residence offers spacious and well-balanced accommodation. Available with no onward chain, the home features three generous double bedrooms, perfectly suited to modern family living or those in need of versatile space.



Upon entering, you will find a light and airy living room that invites relaxation, alongside a separate dining room perfect for entertaining. The home is further enhanced by a convenient downstairs shower room and a utility area, adding to the practicality of everyday living. The principal bathroom serves the upper floor, ensuring ample facilities for all residents.

A notable highlight of this property is the rear extension, which has created a larger kitchen and an additional dining area, providing a wonderful space for family gatherings and culinary adventures. Outside, the low-maintenance rear garden, bordered by mature shrubs, offers a peaceful retreat for outdoor enjoyment.

For those with vehicles, off-street parking is available, along with an integral garage that presents potential for conversion, should you wish to expand your living space further.

The location is superb, with a variety of local amenities, excellent transport links, and some of the area's finest schools all within walking distance. This home is not just a property; it is a lifestyle choice in a sought-after area. Do not miss the chance to make this lovely house your new home.

**General Information:**

Tenure: Freehold

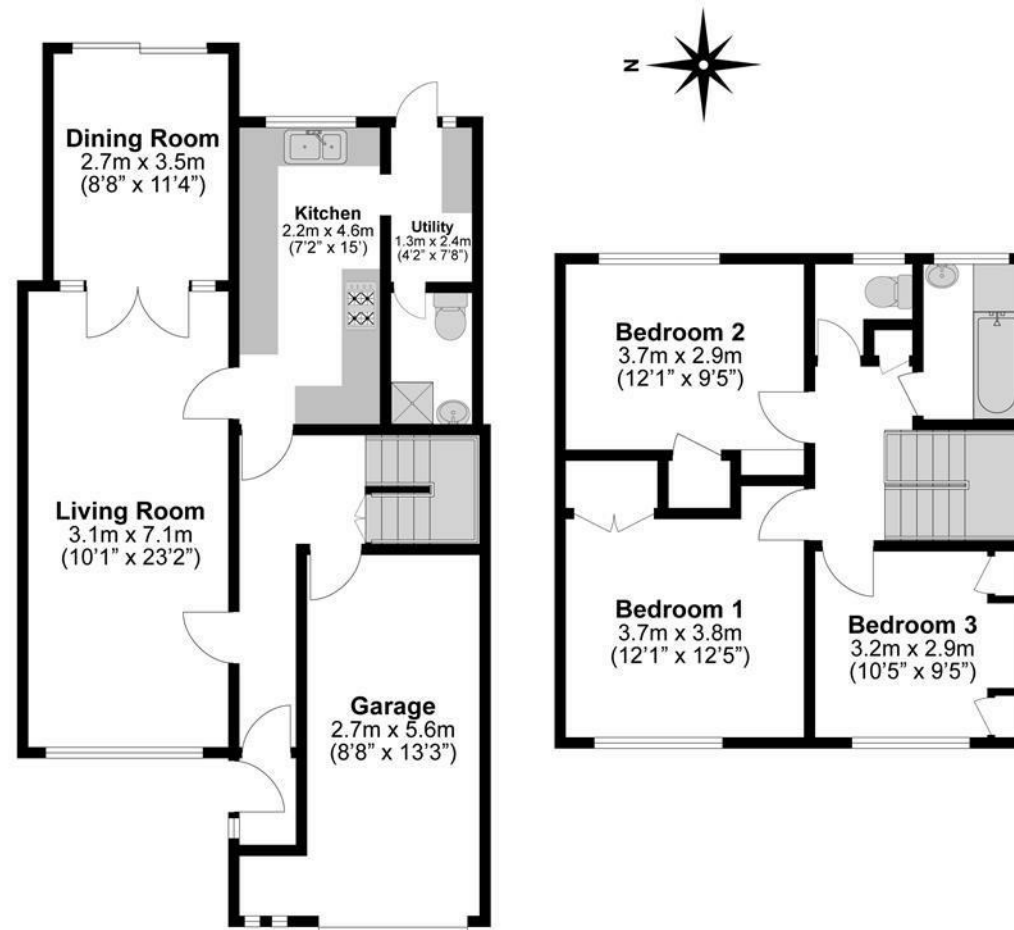
Council Tax Banding: E

**Legal Note:**

\*\*Although these particulars are thought to be materially correct, their accuracy cannot be guaranteed and they do not form part of any contract.\*\*







**Illustrations are for identification purposes only,  
measurements are approximate, not to scale.**