



## TIDEMILL SQUARE, SE10

£3,650 per month

Luxurious apartment  
Outstanding views  
Private balcony  
Gym, cinema and roof terrace  
24-hour concierge  
Energy rating: b

@marshandparsons  
marshandparsons.co.uk

MARSH &  
PARSONS

# ABOUT THE PROPERTY

An exceptional three bedroom apartment on the 25th floor of this sought after North Greenwich development, offering breathtaking panoramic views of the London skyline, Canary Wharf, the O2 and the River Thames.

North Greenwich underground station is just a short walk away, providing access to Canary Wharf and London Bridge. The O2 offers an array of entertainment options including concerts, bowling, and the Icon Designer Outlet, alongside a wide selection of international restaurants.







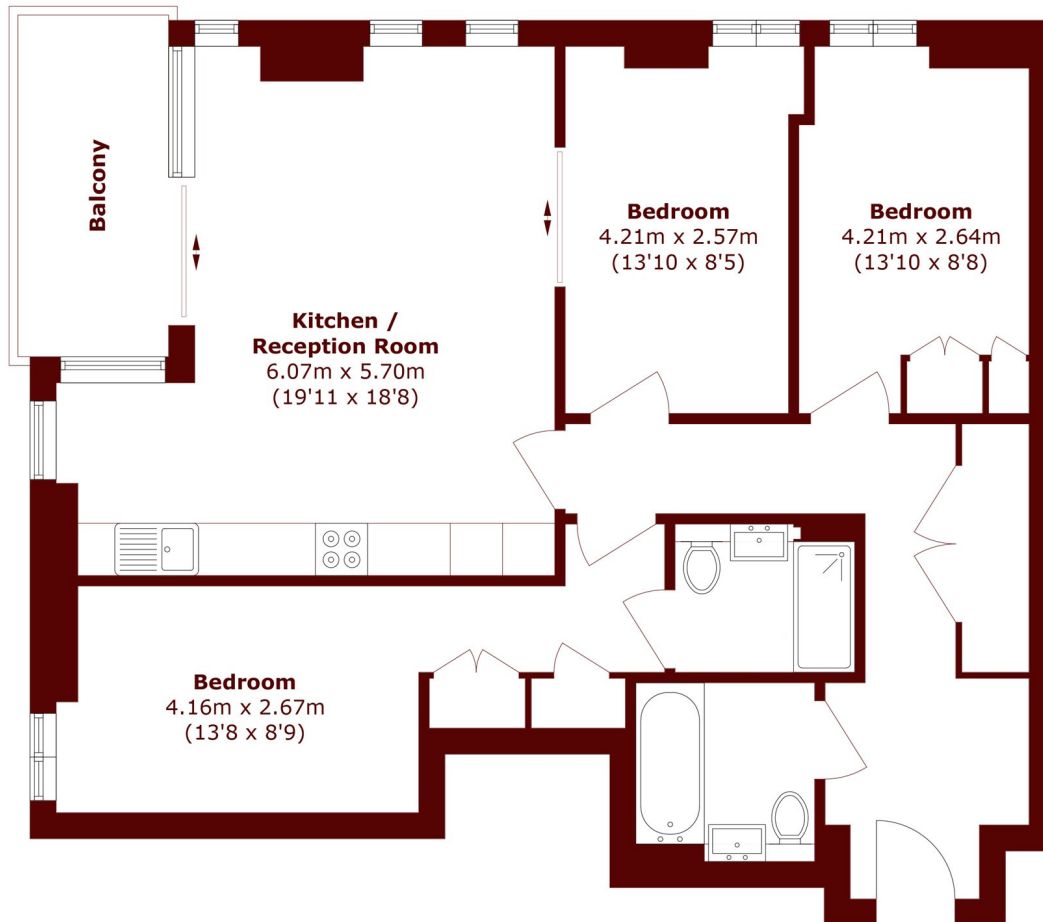
## FURTHER DETAILS

Set within the prestigious Lower Riverside development, residents enjoy exclusive access to The Aperture, featuring a 24-hour concierge, three floors of gym facilities including a fitness studio, a business suite, and bookable meeting rooms. Additional amenities at The Waterman include a private cinema, roof terrace, library, study spaces and a communal kitchen with a complimentary coffee machine.

Internally, the apartment features a wide entrance hall with built-in utility cupboard and elegant herringbone wood flooring throughout. Offering a spacious open plan reception and kitchen, enhanced by floor-to-ceiling windows and direct access to a generous private balcony.



# STEP INSIDE TIDEMILL SQUARE



## Twenty Fifth Floor

Total area (approx.): 92.4 sq. m (994.5 sq. ft)  
Balcony area (approx.): 6.7 sq. m (72.1 sq. ft)

Greenwich  
020 8815 2230

Energy Rating: B We aim to make our particulars both accurate and reliable. However, they are not guaranteed; nor do they form part of an offer or contract. If you require clarification on any points then please contact us, especially if you're traveling some distance to view. Please note that appliances and heating systems have not been tested and therefore no warranties can be given as to their good working order

MARSH &  
PARSONS